

## Product datasheet for **TA502424AM**

### Malignant T cell amplified sequence 1 (MCTS1) Mouse Monoclonal Antibody (Biotin conjugated) [Clone ID: OTI2F9]

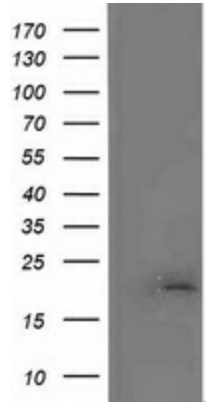
#### Product data:

Product Type:	Primary Antibodies
Clone Name:	OTI2F9
Applications:	IHC, WB
Recommended Dilution:	WB 1:2000, IHC 1:150
Reactivity:	Human, Mouse, Rat
Host:	Mouse
Isotype:	IgG2a
Clonality:	Monoclonal
Immunogen:	Human recombinant protein fragment corresponding to amino acids 1-181 of human MCTS1 (NP_054779) produced in E.coli.
Formulation:	PBS (pH 7.3) containing 1% BSA, 50% glycerol and 0.02% sodium azide.
Concentration:	0.5 mg/ml
Purification:	Purified from mouse ascites fluids or tissue culture supernatant by affinity chromatography (protein A/G)
Conjugation:	Biotin
Storage:	Store at -20°C as received.
Stability:	Stable for 12 months from date of receipt.
Predicted Protein Size:	20.4 kDa
Gene Name:	MCTS1 re-initiation and release factor
Database Link:	<a href="#">NP_054779</a> <a href="#">Entrez Gene 68995 Mouse</a> <a href="#">Entrez Gene 302500 Rat</a> <a href="#">Entrez Gene 28985 Human</a> <a href="#">Q9ULC4</a>
Synonyms:	MCT-1; MCT1
Protein Families:	Druggable Genome

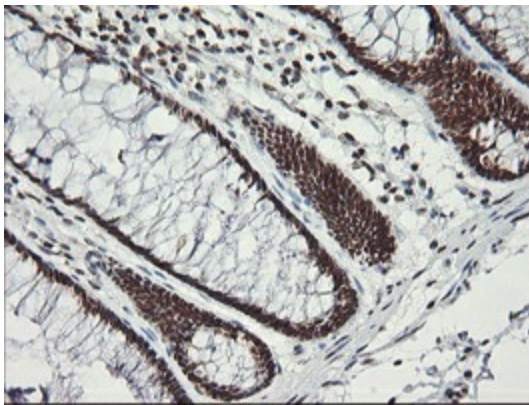


[View online »](#)

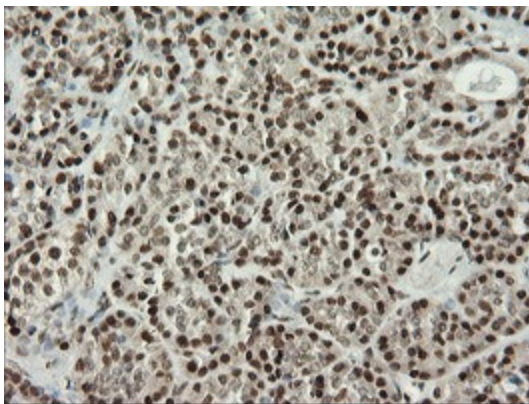
**Product images:**



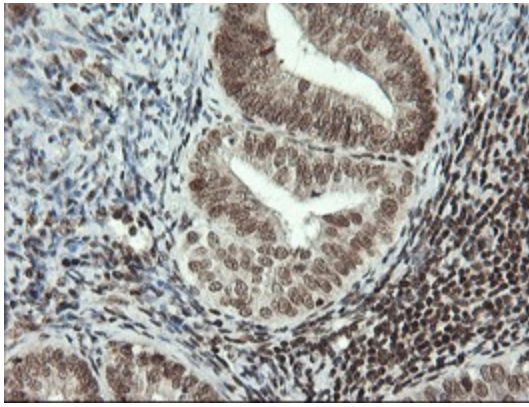
HEK293T cells were transfected with the pCMV6-ENTRY control (Cat# [PS100001], Left lane) or pCMV6-ENTRY MCTS1 (Cat# [RC200224], Right lane) cDNA for 48 hrs and lysed. Equivalent amounts of cell lysates (5 ug per lane) were separated by SDS-PAGE and immunoblotted with anti-MCTS1(Cat# [TA502424]). Positive lysates [LY415503] (100ug) and [LC415503] (20ug) can be purchased separately from OriGene.



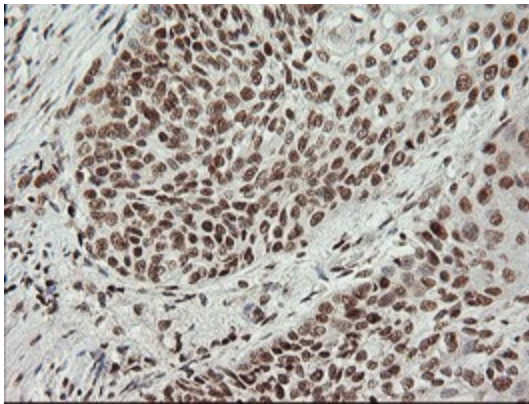
Immunohistochemical staining of paraffin-embedded Human colon tissue within the normal limits using anti-MCTS1 mouse monoclonal antibody. (Heat-induced epitope retrieval by 10mM citric buffer, pH6.0, 100°C for 10min, [TA502424])



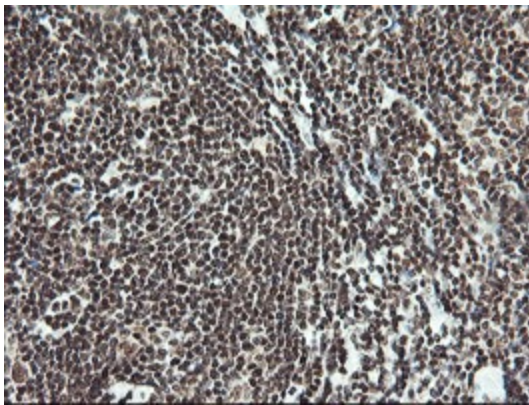
Immunohistochemical staining of paraffin-embedded Human pancreas tissue within the normal limits using anti-MCTS1 mouse monoclonal antibody. (Heat-induced epitope retrieval by 10mM citric buffer, pH6.0, 100°C for 10min, [TA502424])



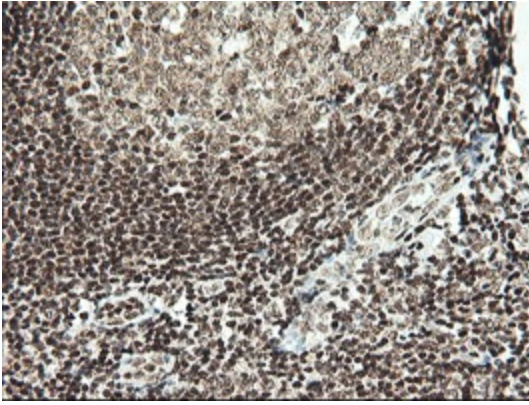
Immunohistochemical staining of paraffin-embedded Adenocarcinoma of Human endometrium tissue using anti-MCTS1 mouse monoclonal antibody. (Heat-induced epitope retrieval by 10mM citric buffer, pH6.0, 100°C for 10min, [TA502424])



Immunohistochemical staining of paraffin-embedded Carcinoma of Human bladder tissue using anti-MCTS1 mouse monoclonal antibody. (Heat-induced epitope retrieval by 10mM citric buffer, pH6.0, 100°C for 10min, [TA502424])



Immunohistochemical staining of paraffin-embedded Human Lymphoma tissue using anti-MCTS1 mouse monoclonal antibody. (Heat-induced epitope retrieval by 10mM citric buffer, pH6.0, 100°C for 10min, [TA502424])



Immunohistochemical staining of paraffin-embedded Human tonsil within the normal limits using anti-MCTS1 mouse monoclonal antibody. (Heat-induced epitope retrieval by 10mM citric buffer, pH6.0, 100°C for 10min, [TA502424])