

Product datasheet for **TA502422S**

CHCHD5 Mouse Monoclonal Antibody [Clone ID: OTI9E6]

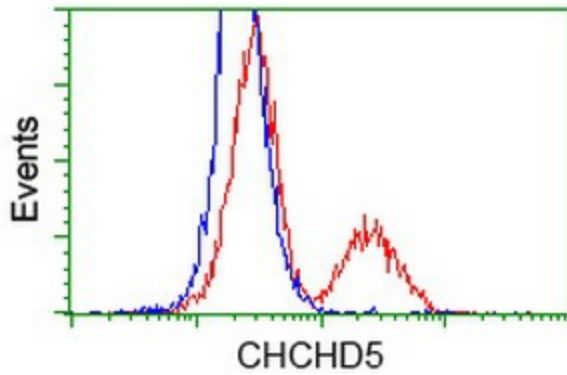
Product data:

Product Type:	Primary Antibodies
Clone Name:	OTI9E6
Applications:	FC, IHC, WB
Recommended Dilution:	WB 1:2000, IHC 1:150, FLOW 1:100
Reactivity:	Human, Mouse, Rat
Host:	Mouse
Isotype:	IgG1
Clonality:	Monoclonal
Immunogen:	Full length human recombinant protein of human CHCHD5 (NP_115685) produced in E.coli.
Formulation:	PBS (pH 7.3) containing 1% BSA, 50% glycerol and 0.02% sodium azide.
Concentration:	0.62 mg/ml
Purification:	Purified from mouse ascites fluids or tissue culture supernatant by affinity chromatography (protein A/G)
Conjugation:	Unconjugated
Storage:	Store at -20°C as received.
Stability:	Stable for 12 months from date of receipt.
Predicted Protein Size:	12.2 kDa
Gene Name:	coiled-coil-helix-coiled-coil-helix domain containing 5
Database Link:	NP_115685 Entrez Gene 84269 Human Q9BSY4
Synonyms:	C2orf9; MIC14

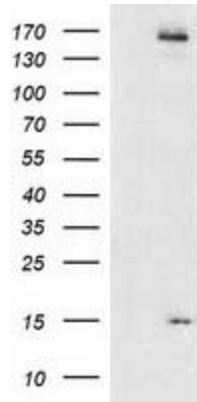


[View online »](#)

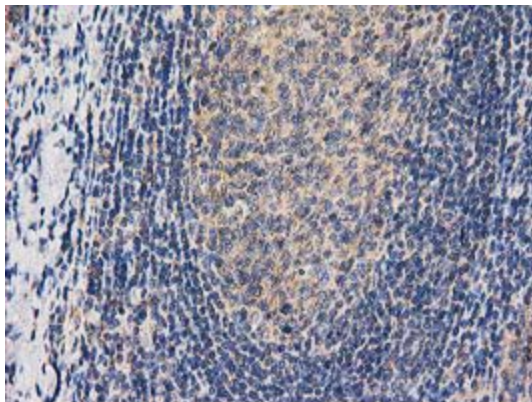
Product images:



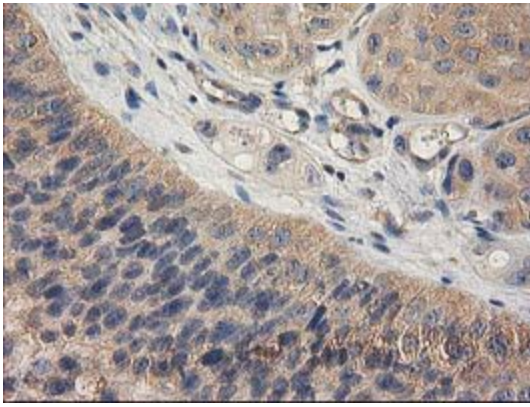
HEK293T cells transfected with either [RC202606] overexpress plasmid (Red) or empty vector control plasmid (Blue) were immunostained by anti-CHCHD5 antibody ([TA502422]), and then analyzed by flow cytometry.



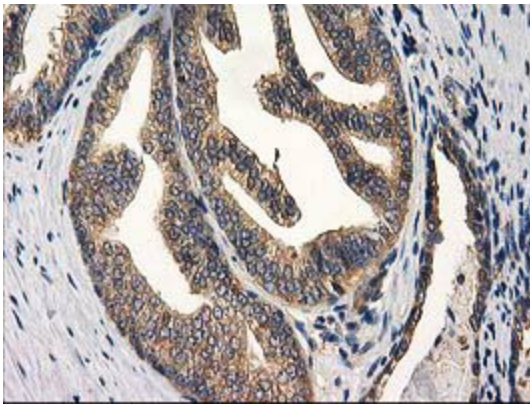
HEK293T cells were transfected with the pCMV6-ENTRY control (Cat# [PS100001], Left lane) or pCMV6-ENTRY CHCHD5 (Cat# [RC202606], Right lane) cDNA for 48 hrs and lysed. Equivalent amounts of cell lysates (5 ug per lane) were separated by SDS-PAGE and immunoblotted with anti-CHCHD5 (Cat# [TA502422]). Positive lysates [LY410209] (100ug) and [LC410209] (20ug) can be purchased separately from OriGene.



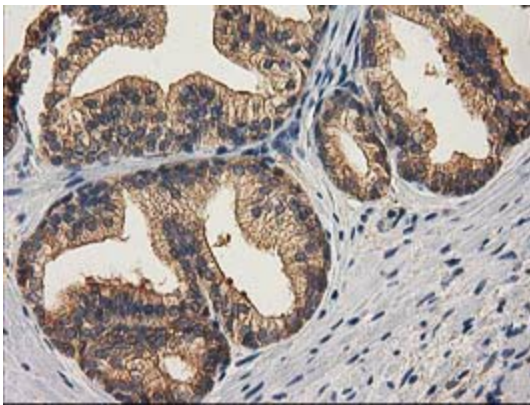
Immunohistochemical staining of paraffin-embedded Human lymph node tissue within the normal limits using anti-CHCHD5 mouse monoclonal antibody. (Heat-induced epitope retrieval by 10mM citric buffer, pH6.0, 100°C for 10min, [TA502422])



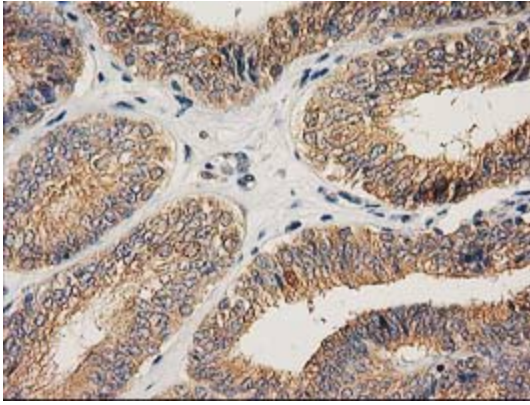
Immunohistochemical staining of paraffin-embedded Carcinoma of Human bladder tissue using anti-CHCHD5 mouse monoclonal antibody. (Heat-induced epitope retrieval by 10mM citric buffer, pH6.0, 100°C for 10min, [TA502422])



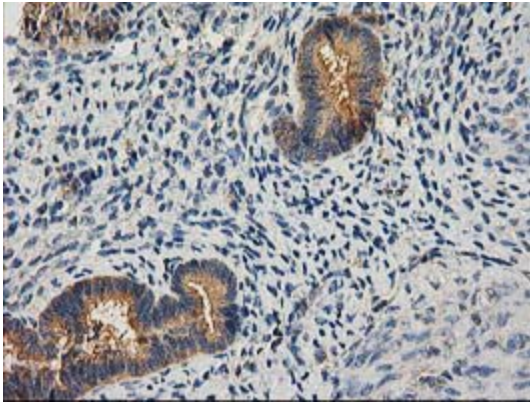
Immunohistochemical staining of paraffin-embedded Carcinoma of Human prostate tissue using anti-CHCHD5 mouse monoclonal antibody. (Heat-induced epitope retrieval by 10mM citric buffer, pH6.0, 100°C for 10min, [TA502422])



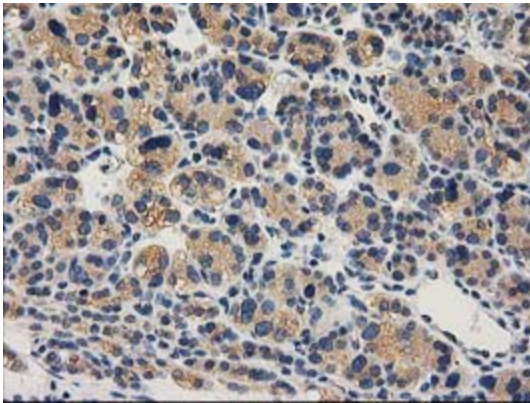
Immunohistochemical staining of paraffin-embedded Human prostate tissue within the normal limits using anti-CHCHD5 mouse monoclonal antibody. (Heat-induced epitope retrieval by 10mM citric buffer, pH6.0, 100°C for 10min, [TA502422])



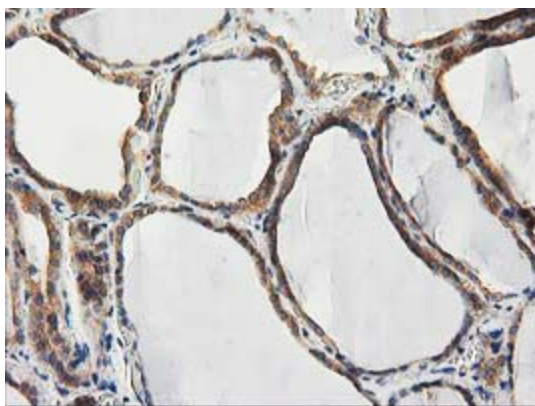
Immunohistochemical staining of paraffin-embedded Adenocarcinoma of Human endometrium tissue using anti-CHCHD5 mouse monoclonal antibody. (Heat-induced epitope retrieval by 10mM citric buffer, pH6.0, 100°C for 10min, [TA502422])



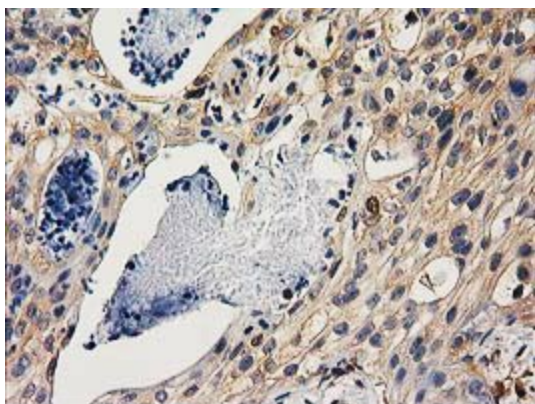
Immunohistochemical staining of paraffin-embedded Human endometrium tissue within the normal limits using anti-CHCHD5 mouse monoclonal antibody. (Heat-induced epitope retrieval by 10mM citric buffer, pH6.0, 100°C for 10min, [TA502422])



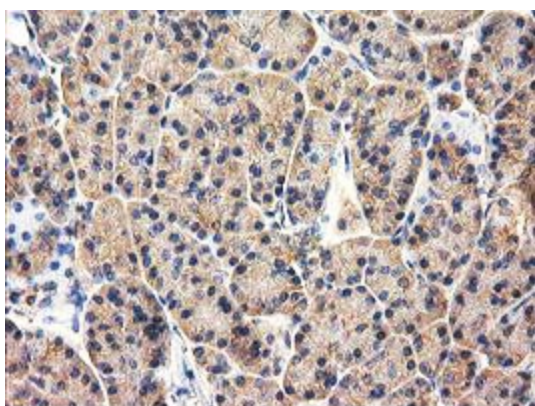
Immunohistochemical staining of paraffin-embedded Carcinoma of Human thyroid tissue using anti-CHCHD5 mouse monoclonal antibody. (Heat-induced epitope retrieval by 10mM citric buffer, pH6.0, 100°C for 10min, [TA502422])



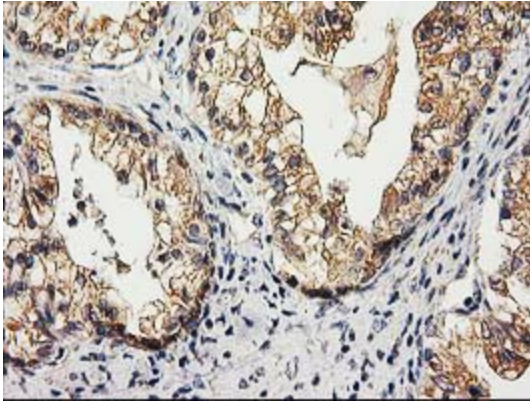
Immunohistochemical staining of paraffin-embedded Human thyroid tissue within the normal limits using anti-CHCHD5 mouse monoclonal antibody. (Heat-induced epitope retrieval by 10mM citric buffer, pH6.0, 100°C for 10min, [TA502422])



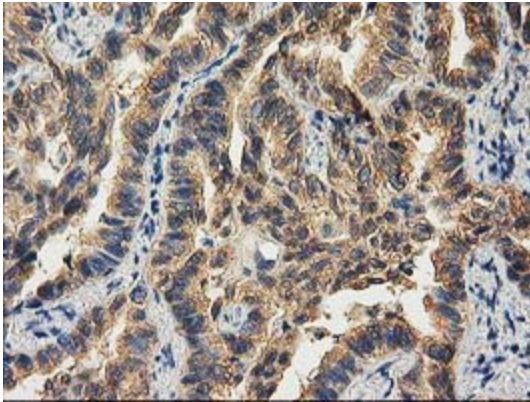
Immunohistochemical staining of paraffin-embedded Carcinoma of Human pancreas tissue using anti-CHCHD5 mouse monoclonal antibody. (Heat-induced epitope retrieval by 10mM citric buffer, pH6.0, 100°C for 10min, [TA502422])



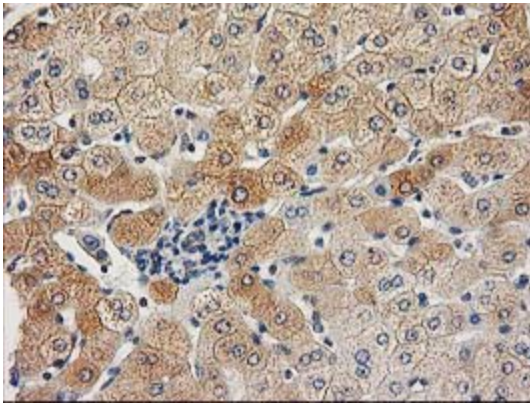
Immunohistochemical staining of paraffin-embedded Human pancreas tissue within the normal limits using anti-CHCHD5 mouse monoclonal antibody. (Heat-induced epitope retrieval by 10mM citric buffer, pH6.0, 100°C for 10min, [TA502422])



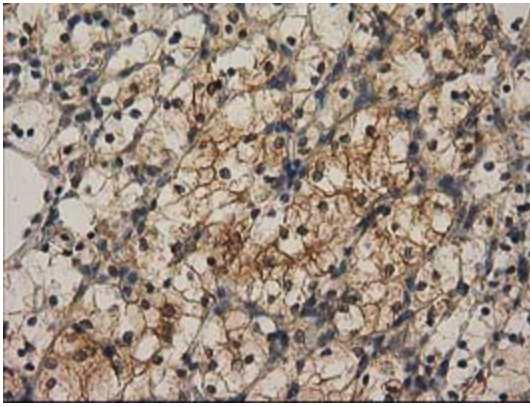
Immunohistochemical staining of paraffin-embedded Adenocarcinoma of Human ovary tissue using anti-CHCHD5 mouse monoclonal antibody. (Heat-induced epitope retrieval by 10mM citric buffer, pH6.0, 100°C for 10min, [TA502422])



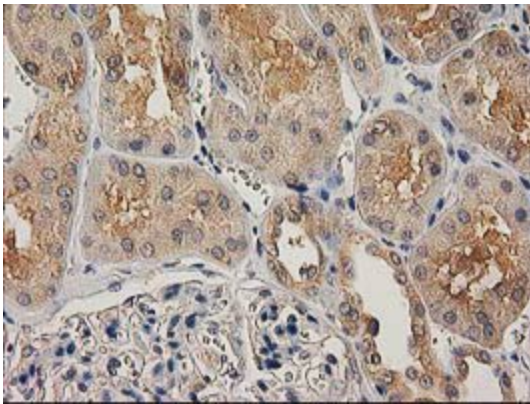
Immunohistochemical staining of paraffin-embedded Carcinoma of Human lung tissue using anti-CHCHD5 mouse monoclonal antibody. (Heat-induced epitope retrieval by 10mM citric buffer, pH6.0, 100°C for 10min, [TA502422])



Immunohistochemical staining of paraffin-embedded Human liver tissue within the normal limits using anti-CHCHD5 mouse monoclonal antibody. (Heat-induced epitope retrieval by 10mM citric buffer, pH6.0, 100°C for 10min, [TA502422])



Immunohistochemical staining of paraffin-embedded Carcinoma of Human kidney tissue using anti-CHCHD5 mouse monoclonal antibody. (Heat-induced epitope retrieval by 10mM citric buffer, pH6.0, 100°C for 10min, [TA502422])



Immunohistochemical staining of paraffin-embedded Human Kidney tissue within the normal limits using anti-CHCHD5 mouse monoclonal antibody. (Heat-induced epitope retrieval by 10mM citric buffer, pH6.0, 100°C for 10min, [TA502422])