

Product datasheet for **TA502416M**

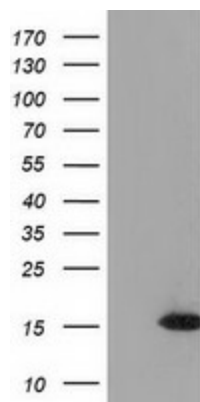
UBL4A Mouse Monoclonal Antibody [Clone ID: OTI1D4]

Product data:

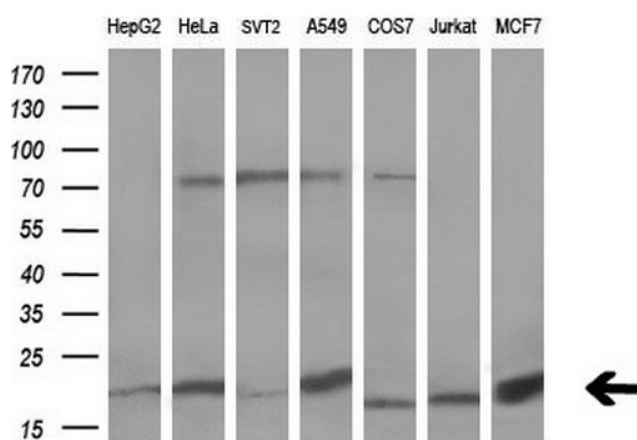
Product Type:	Primary Antibodies
Clone Name:	OTI1D4
Applications:	IF, IHC, WB
Recommended Dilution:	WB: 1:200 - 1:1000, IHC 1:150, IF 1:100
Reactivity:	Human, Mouse, Rat
Host:	Mouse
Isotype:	IgG1
Clonality:	Monoclonal
Immunogen:	Full length human recombinant protein of human UBL4A (NP_055050) produced in E.coli.
Formulation:	PBS (pH 7.3) containing 1% BSA, 50% glycerol and 0.02% sodium azide.
Concentration:	0.52 mg/ml
Purification:	Purified from mouse ascites fluids or tissue culture supernatant by affinity chromatography (protein A/G)
Conjugation:	Unconjugated
Storage:	Store at -20°C as received.
Stability:	Stable for 12 months from date of receipt.
Predicted Protein Size:	17.6 kDa
Gene Name:	ubiquitin like 4A
Database Link:	NP_055050 Entrez Gene 27643 Mouse Entrez Gene 293864 Rat Entrez Gene 8266 Human P11441
Synonyms:	DX254E; DXS254E; G6PD; GDX; GET5; MDY2; TMA24; UBL4
Protein Families:	Druggable Genome


[View online »](#)

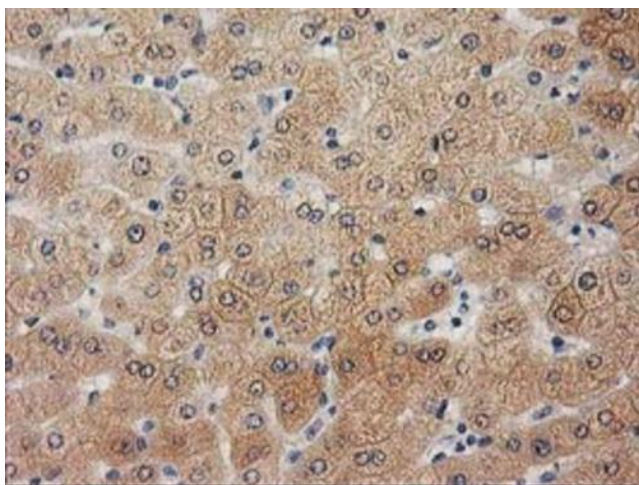
Product images:



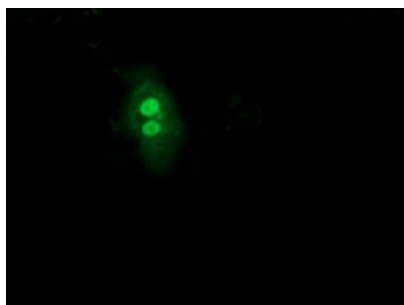
HEK293T cells were transfected with the pCMV6-ENTRY control (Cat# [PS100001], Left lane) or pCMV6-ENTRY UBL4A (Cat# [RC208121], Right lane) cDNA for 48 hrs and lysed. Equivalent amounts of cell lysates (5 ug per lane) were separated by SDS-PAGE and immunoblotted with anti-UBL4A (Cat# [TA502416]). Positive lysates [LY415426] (100ug) and [LC415426] (20ug) can be purchased separately from OriGene.



Western blot analysis of extracts (10ug) from 7 different cell lines by using anti-UBL4A monoclonal antibody (1:200).



Immunohistochemical staining of paraffin-embedded Human liver tissue within the normal limits using anti-UBL4A mouse monoclonal antibody. Heat-induced epitope retrieval by EDTA solution buffer pH 8.0 at 120°C for 3 min.



Anti-UBL4A mouse monoclonal antibody ([TA502416]) immunofluorescent staining of COS7 cells transiently transfected by pCMV6-ENTRY UBL4A ([RC208121]).