

## Product datasheet for **TA502413**

### Arginase 1 (ARG1) Mouse Monoclonal Antibody [Clone ID: OTI4E6]

#### Product data:

Product Type:	Primary Antibodies
Clone Name:	OTI4E6
Applications:	FC, IHC, WB
Recommended Dilution:	WB 1:1000~2000, IHC 1:50, FLOW 1:100
Reactivity:	Human, Mouse, Rat
Host:	Mouse
Isotype:	IgG1
Clonality:	Monoclonal
Immunogen:	Full length human recombinant protein of human ARG1 (NP_000036) produced in HEK293T cell.
Formulation:	PBS (pH 7.3) containing 1% BSA, 50% glycerol and 0.02% sodium azide.
Concentration:	1 mg/ml
Purification:	Purified from mouse ascites fluids or tissue culture supernatant by affinity chromatography (protein A/G)
Conjugation:	Unconjugated
Storage:	Store at -20°C as received.
Stability:	Stable for 12 months from date of receipt.
Predicted Protein Size:	34.6 kDa
Gene Name:	arginase 1
Database Link:	<a href="#">NP_000036</a> <a href="#">Entrez Gene 11846 Mouse</a> <a href="#">Entrez Gene 29221 Rat</a> <a href="#">Entrez Gene 383 Human</a> <a href="#">P05089</a>
Background:	Arginase catalyzes the hydrolysis of arginine to ornithine and urea. At least two isoforms of mammalian arginase exist (types I and II) which differ in their tissue distribution, subcellular localization, immunologic crossreactivity and physiologic function. The type I isoform encoded by this gene, is a cytosolic enzyme and expressed predominantly in the liver as a component of the urea cycle. Inherited deficiency of this enzyme results in argininemia, an autosomal recessive disorder characterized by hyperammonemia. [provided by RefSeq]



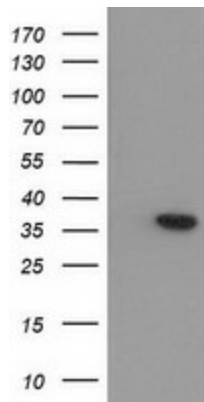
[View online »](#)

**Synonyms:** arginase; arginase 1; liver; liver-type arginase; OTTHUMP00000017209; type I arginase

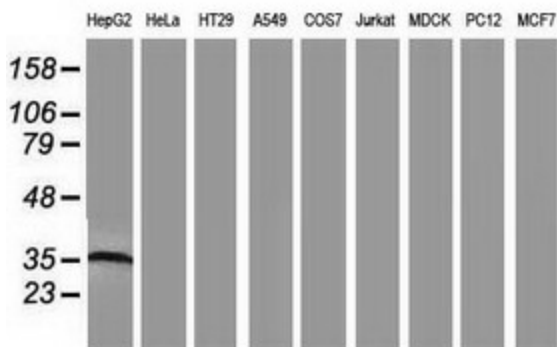
**Protein Families:** Druggable Genome

**Protein Pathways:** Arginine and proline metabolism, Metabolic pathways

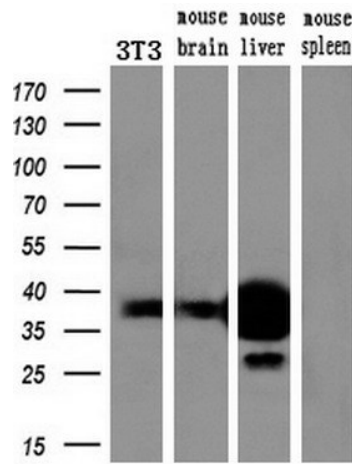
**Product images:**



HEK293T cells were transfected with the pCMV6-ENTRY control (Cat# [PS100001], Left lane) or pCMV6-ENTRY ARG1 (Cat# [RC204649], Right lane) cDNA for 48 hrs and lysed. Equivalent amounts of cell lysates (5 ug per lane) were separated by SDS-PAGE and immunoblotted with anti-ARG1 (Cat# TA502413). Positive lysates [LY424951] (100ug) and [LC424951] (20ug) can be purchased separately from OriGene.



Western blot analysis of extracts (35ug) from 9 different cell lines by using anti-ARG1 monoclonal antibody.



Western blot analysis of extracts (10ug) from a mouse cell line and 3 different mouse tissues by using anti-ARG1 monoclonal antibody (1:200).

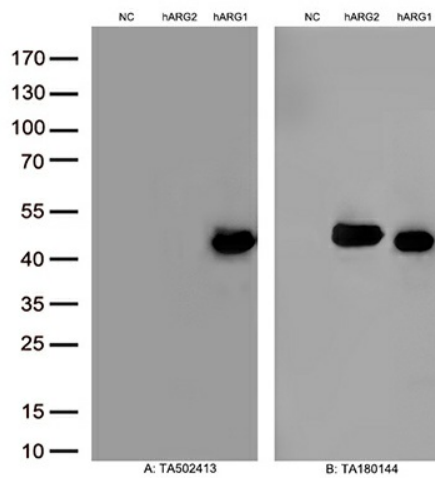
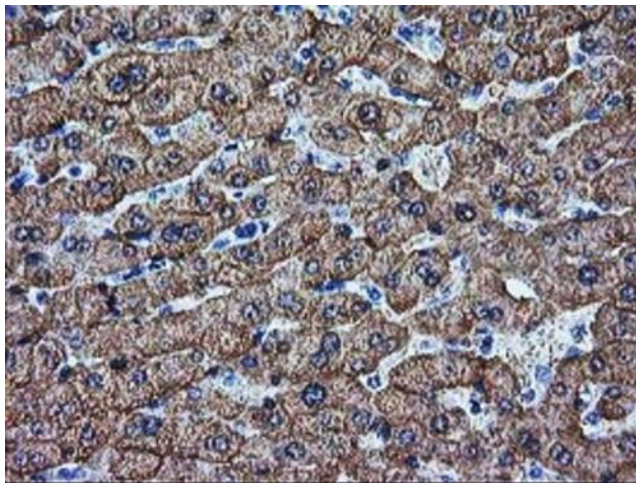
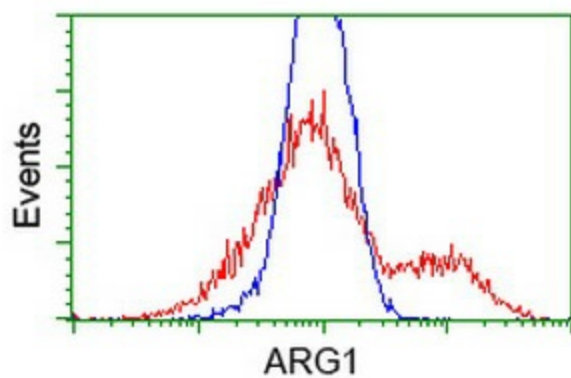


Figure A, Western blot analysis of overexpressed lysates(15ug per lane) from HEK293T cells transfected with empty plasmid ([PS100001], NC), human ARG2 plasmid ([RC206756], hARG2), human ARG1 plasmid ([RC204649], hARG1) using anti-ARG1 antibody TA502413(1:500). Figure B, Western blot analysis of the same samples as figure A with anti-DDK antibody ([TA180144], 1:1000)



Immunohistochemical staining of paraffin-embedded Human liver tissue within the normal limits using anti-ARG1 mouse monoclonal antibody. Heat-induced epitope retrieval by EDTA solution buffer pH 8.0 at 120°C for 3 min.



HEK293T cells transfected with either [RC204649] overexpress plasmid (Red) or empty vector control plasmid (Blue) were immunostained by anti-ARG1 antibody (TA502413), and then analyzed by flow cytometry.