

Product datasheet for **TA502402BM**

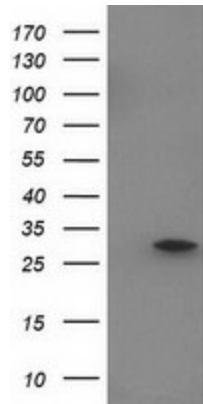
EIF4EL3 (EIF4E2) Mouse Monoclonal Antibody (HRP conjugated) [Clone ID: OTI1F5]

Product data:

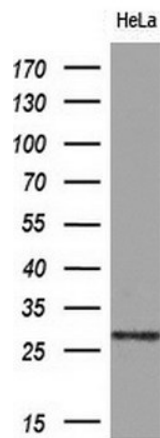
| | |
|-------------------------|---|
| Product Type: | Primary Antibodies |
| Clone Name: | OTI1F5 |
| Applications: | WB |
| Recommended Dilution: | WB 1:2000 |
| Reactivity: | Human, Mouse |
| Host: | Mouse |
| Isotype: | IgG1 |
| Clonality: | Monoclonal |
| Immunogen: | Full length human recombinant protein of human EIF4E2 (NP_004837) produced in HEK293T cell. |
| Formulation: | PBS (pH 7.3) containing 1% BSA, 50% glycerol. |
| Concentration: | 0.5 mg/ml |
| Purification: | Purified from mouse ascites fluids or tissue culture supernatant by affinity chromatography (protein A/G) |
| Conjugation: | HRP |
| Storage: | Store at -20°C as received. |
| Stability: | Stable for 12 months from date of receipt. |
| Predicted Protein Size: | 28.2 kDa |
| Gene Name: | eukaryotic translation initiation factor 4E family member 2 |
| Database Link: | NP_004837 Entrez Gene 26987 Mouse Entrez Gene 9470 Human O60573 |
| Synonyms: | 4E-LP; 4EHP; EIF4EL3; IF4e |
| Protein Families: | Transcription Factors |
| Protein Pathways: | Insulin signaling pathway, mTOR signaling pathway |



[View online »](#)

Product images:

HEK293T cells were transfected with the pCMV6-ENTRY control (Left lane) or pCMV6-ENTRY EIF4E2 ([RC201391], Right lane) cDNA for 48 hrs and lysed. Equivalent amounts of cell lysates (5 ug per lane) were separated by SDS-PAGE and immunoblotted with anti-EIF4E2. Positive lysates [LY401518] (100ug) and [LC401518] (20ug) can be purchased separately from OriGene.



Western blot analysis of extracts (10ug) from 1 cell line by using anti-EIF4E2 monoclonal antibody (1:200).