

## Product datasheet for **TA502399M**

### CHCHD5 Mouse Monoclonal Antibody [Clone ID: OTI3H3]

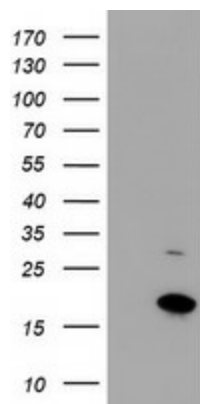
#### Product data:

Product Type:	Primary Antibodies
Clone Name:	OTI3H3
Applications:	FC, IF, IHC, WB
Recommended Dilution:	WB 1:200, IHC 1:150, IF 1:100, FLOW 1:100
Reactivity:	Human, Mouse, Rat
Host:	Mouse
Isotype:	IgG1
Clonality:	Monoclonal
Immunogen:	Human recombinant protein fragment corresponding to amino acids 1-110 of human CHCHD5(NP_115685) produced in E.coli.
Formulation:	PBS (pH 7.3) containing 1% BSA, 50% glycerol and 0.02% sodium azide.
Concentration:	0.35 mg/ml
Purification:	Purified from mouse ascites fluids or tissue culture supernatant by affinity chromatography (protein A/G)
Conjugation:	Unconjugated
Storage:	Store at -20°C as received.
Stability:	Stable for 12 months from date of receipt.
Predicted Protein Size:	12.2 kDa
Gene Name:	coiled-coil-helix-coiled-coil-helix domain containing 5
Database Link:	<a href="#">NP_115685</a> <a href="#">Entrez Gene 84269 Human</a> <a href="#">Q9BSY4</a>
Synonyms:	C2orf9; MIC14

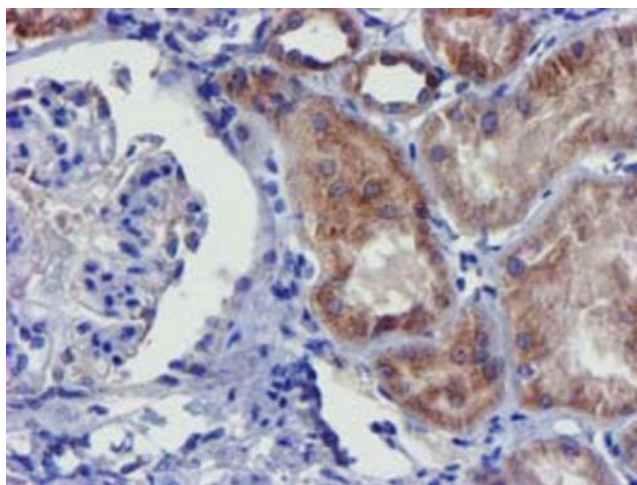
[View online »](#)



## Product images:

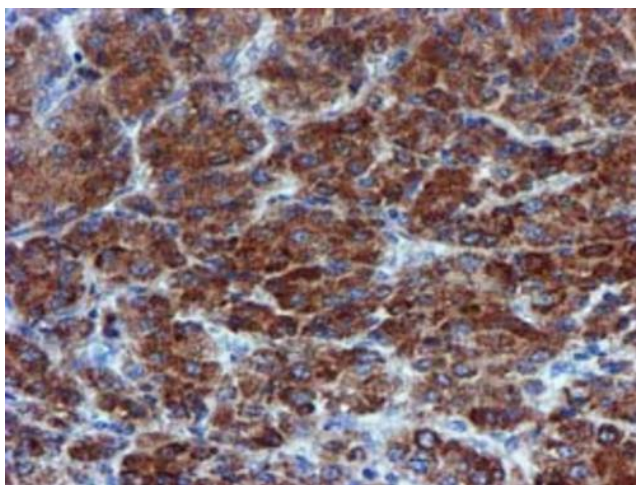


HEK293T cells were transfected with the pCMV6-ENTRY control (Left lane) or pCMV6-ENTRY CHCHD5 ([RC202606], Right lane) cDNA for 48 hrs and lysed. Equivalent amounts of cell lysates (5 ug per lane) were separated by SDS-PAGE and immunoblotted with anti-CHCHD5. Positive lysates [LY410209] (100ug) and [LC410209] (20ug) can be purchased separately from OriGene.

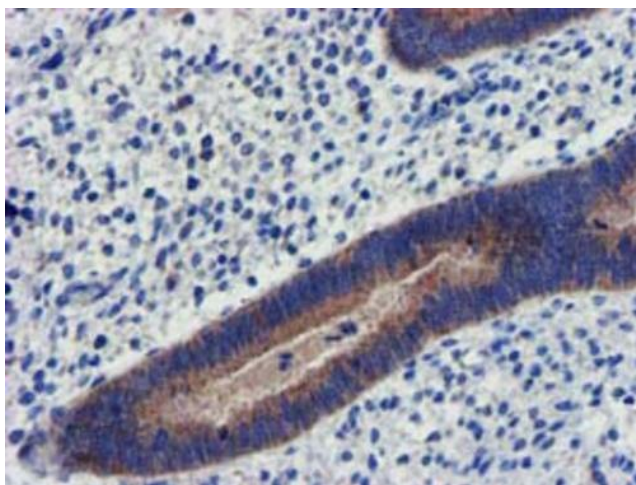


Immunohistochemical staining of paraffin-embedded Human Kidney tissue within the normal limits using anti-CHCHD5 mouse monoclonal antibody. Heat-induced epitope retrieval by EDTA solution buffer pH 8.0 at 120°C for 3 min.

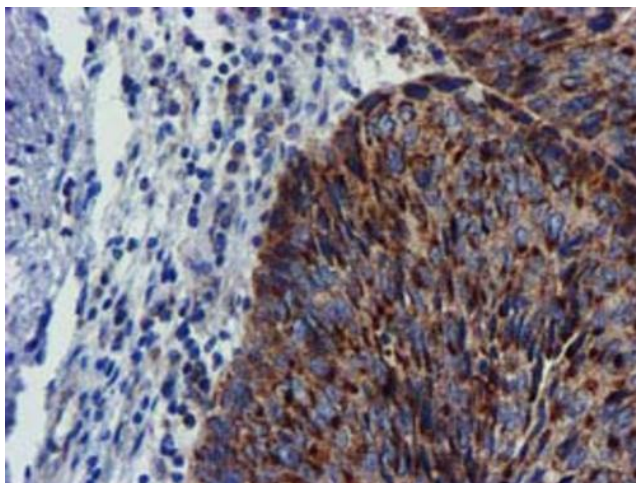




Immunohistochemical staining of paraffin-embedded Carcinoma of Human liver tissue using anti-CHCHD5 mouse monoclonal antibody. Heat-induced epitope retrieval by EDTA solution buffer pH 8.0 at 120°C for 3 min.

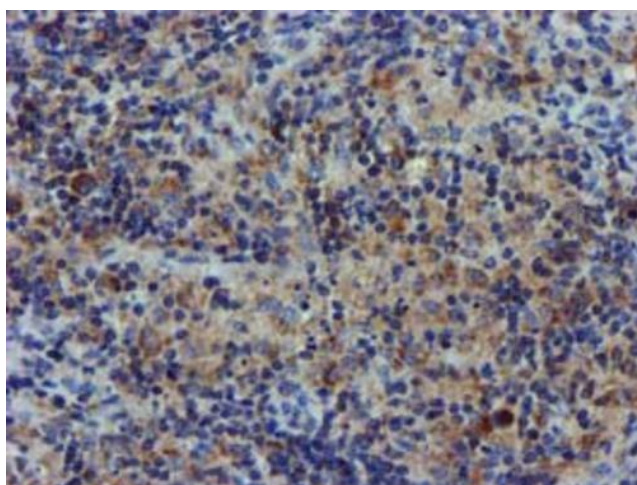


Immunohistochemical staining of paraffin-embedded Human endometrium tissue within the normal limits using anti-CHCHD5 mouse monoclonal antibody. Heat-induced epitope retrieval by EDTA solution buffer pH 8.0 at 120°C for 3 min.

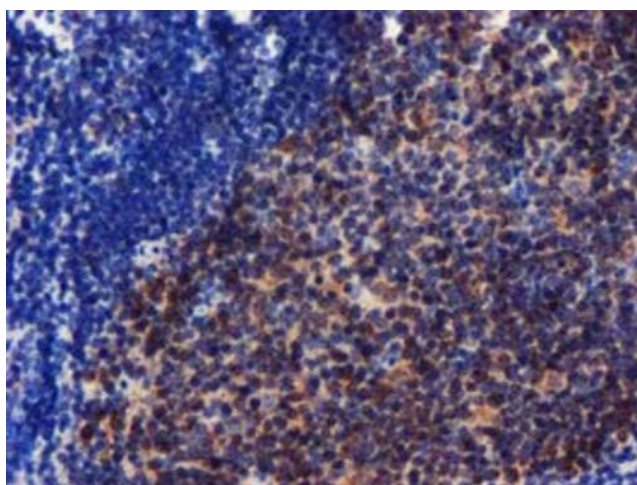


Immunohistochemical staining of paraffin-embedded Carcinoma of Human bladder tissue using anti-CHCHD5 mouse monoclonal antibody. Heat-induced epitope retrieval by EDTA solution buffer pH 8.0 at 120°C for 3 min.

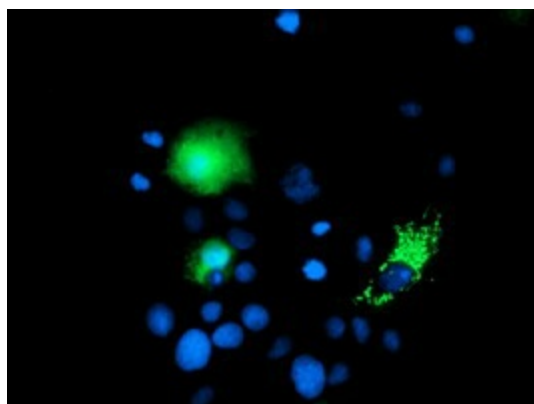




Immunohistochemical staining of paraffin-embedded Human lymphoma tissue using anti-CHCHD5 mouse monoclonal antibody. Heat-induced epitope retrieval by EDTA solution buffer pH 8.0 at 120°C for 3 min.

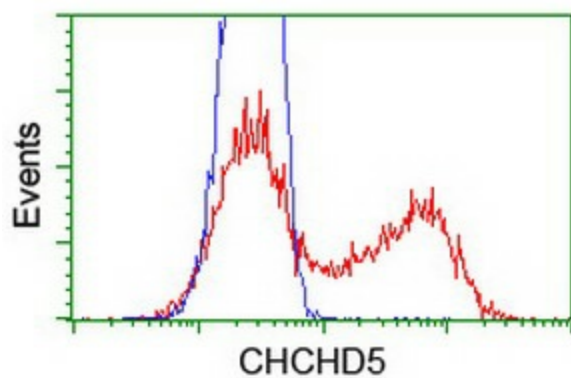


Immunohistochemical staining of paraffin-embedded Human tonsil within the normal limits using anti-CHCHD5 mouse monoclonal antibody. Heat-induced epitope retrieval by EDTA solution buffer pH 8.0 at 120°C for 3 min.



Anti-CHCHD5 mouse monoclonal antibody ([TA502399]) immunofluorescent staining of COS7 cells transiently transfected by pCMV6-ENTRY CHCHD5 ([RC202606]).





HEK293T cells transfected with either [RC202606] overexpress plasmid (Red) or empty vector control plasmid (Blue) were immunostained by anti-CHCHD5 antibody ([TA502399]), and then analyzed by flow cytometry.