

## Product datasheet for **TA502396BM**

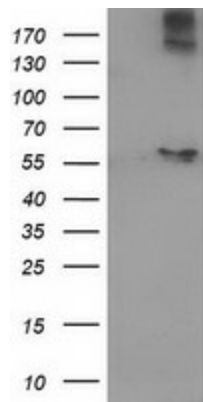
### ACOT12 Mouse Monoclonal Antibody (HRP conjugated) [Clone ID: OTI1A11]

#### Product data:

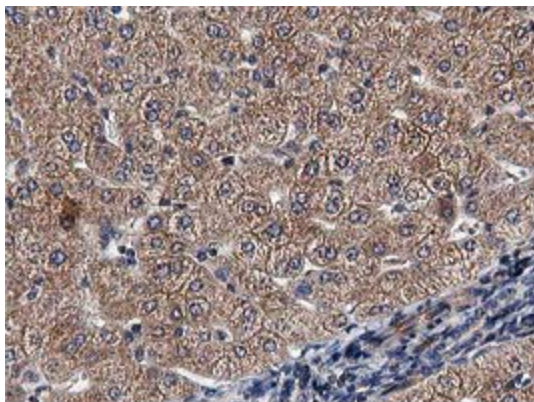
Product Type:	Primary Antibodies
Clone Name:	OTI1A11
Applications:	FC, IHC, WB
Recommended Dilution:	WB 1:2000, IHC 1:150, FLOW 1:100
Reactivity:	Human
Host:	Mouse
Isotype:	IgG2a
Clonality:	Monoclonal
Immunogen:	Full length human recombinant protein of human ACOT12 (NP_570123) produced in HEK293T cell.
Formulation:	PBS (pH 7.3) containing 1% BSA, 50% glycerol.
Concentration:	0.5 mg/ml
Purification:	Purified from mouse ascites fluids or tissue culture supernatant by affinity chromatography (protein A/G)
Conjugation:	HRP
Storage:	Store at -20°C as received.
Stability:	Stable for 12 months from date of receipt.
Predicted Protein Size:	61.9 kDa
Gene Name:	acyl-CoA thioesterase 12
Database Link:	<a href="#">NP_570123</a> <a href="#">Entrez Gene 134526 Human</a> <a href="#">Q8WYK0</a>
Synonyms:	Cach; CACH-1; STARD15; THEAL
Protein Pathways:	Pyruvate metabolism



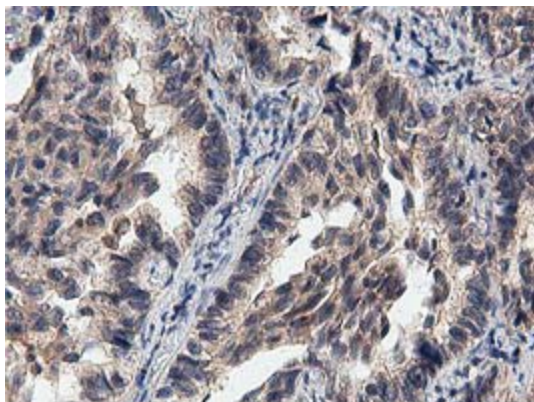
[View online »](#)

**Product images:**

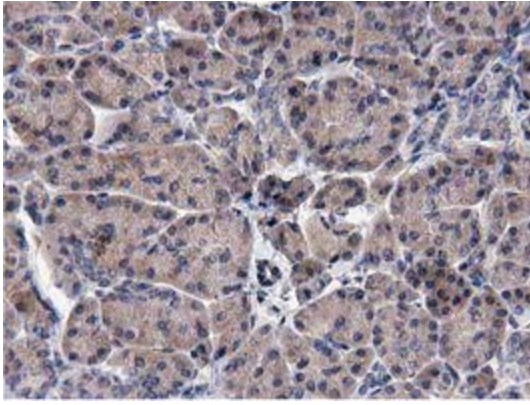
HEK293T cells were transfected with the pCMV6-ENTRY control (Cat# [PS100001], Left lane) or pCMV6-ENTRY ACOT12 (Cat# [RC210445], Right lane) cDNA for 48 hrs and lysed. Equivalent amounts of cell lysates (5 ug per lane) were separated by SDS-PAGE and immunoblotted with anti-ACOT12 (Cat# [TA502396]). Positive lysates [LY408930] (100ug) and [LC408930] (20ug) can be purchased separately from OriGene.



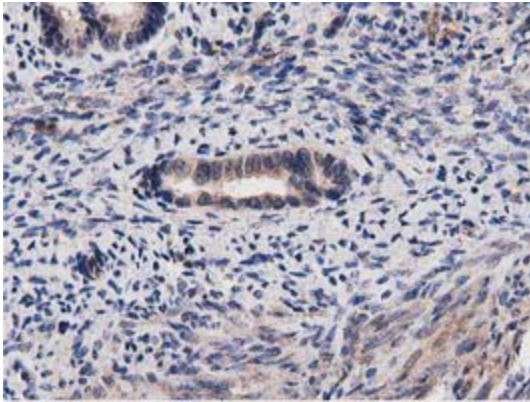
Immunohistochemical staining of paraffin-embedded Human liver tissue within the normal limits using anti-ACOT12 mouse monoclonal antibody. (Heat-induced epitope retrieval by 10mM citric buffer, pH6.0, 100°C for 10min, [TA502396])



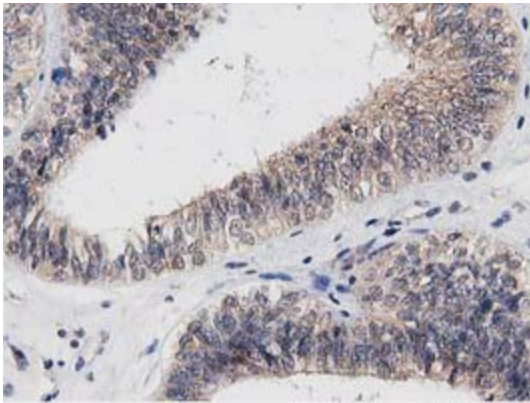
Immunohistochemical staining of paraffin-embedded Carcinoma of Human lung tissue using anti-ACOT12 mouse monoclonal antibody. (Heat-induced epitope retrieval by 10mM citric buffer, pH6.0, 100°C for 10min, [TA502396])



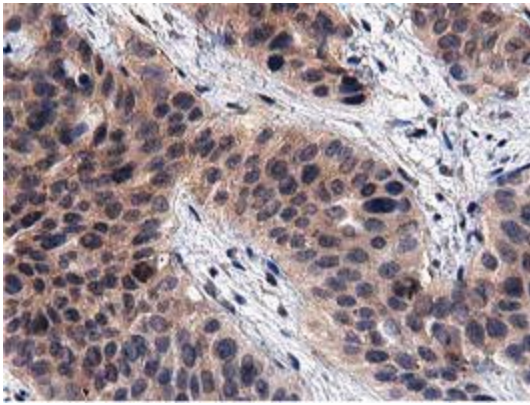
Immunohistochemical staining of paraffin-embedded Human pancreas tissue within the normal limits using anti-ACOT12 mouse monoclonal antibody. (Heat-induced epitope retrieval by 10mM citric buffer, pH6.0, 100°C for 10min, [TA502396])



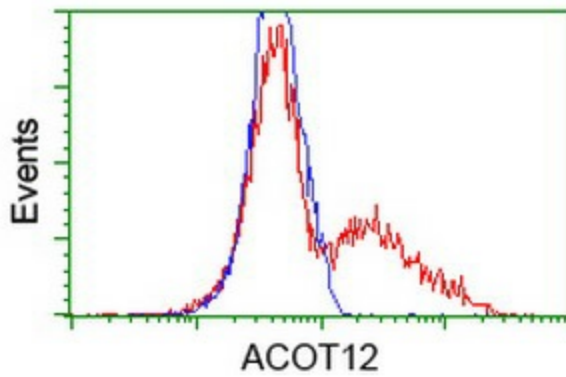
Immunohistochemical staining of paraffin-embedded Human endometrium tissue within the normal limits using anti-ACOT12 mouse monoclonal antibody. (Heat-induced epitope retrieval by 10mM citric buffer, pH6.0, 100°C for 10min, [TA502396])



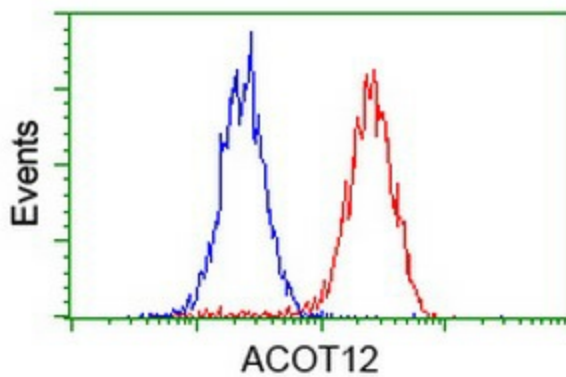
Immunohistochemical staining of paraffin-embedded Adenocarcinoma of Human endometrium tissue using anti-ACOT12 mouse monoclonal antibody. (Heat-induced epitope retrieval by 10mM citric buffer, pH6.0, 100°C for 10min, [TA502396])



Immunohistochemical staining of paraffin-embedded Carcinoma of Human bladder tissue using anti-ACOT12 mouse monoclonal antibody. (Heat-induced epitope retrieval by 10mM citric buffer, pH6.0, 100°C for 10min, [TA502396])



HEK293T cells transfected with either [RC210445] overexpress plasmid (Red) or empty vector control plasmid (Blue) were immunostained by anti-ACOT12 antibody ([TA502396]), and then analyzed by flow cytometry.



Flow cytometric Analysis of HeLa cells, using anti-ACOT12 antibody ([TA502396]), (Red), compared to a nonspecific negative control antibody (TA50011), (Blue).