

Product datasheet for **TA502393M**

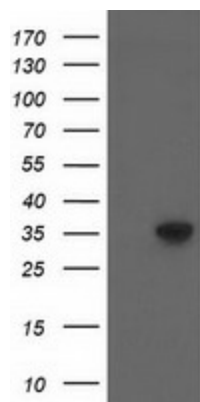
ACY3 Mouse Monoclonal Antibody [Clone ID: OTI4H7]

Product data:

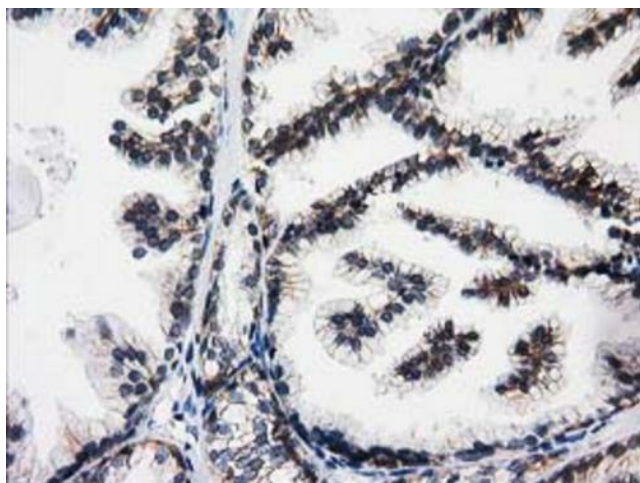
Product Type:	Primary Antibodies
Clone Name:	OTI4H7
Applications:	FC, IHC, WB
Recommended Dilution:	WB 1:1000~2000, IHC 1:150, FLOW 1:100
Reactivity:	Human, Dog, Monkey
Host:	Mouse
Isotype:	IgG1
Clonality:	Monoclonal
Immunogen:	Full length human recombinant protein of human ACY3 (NP_542389) produced in HEK293T cell.
Formulation:	PBS (pH 7.3) containing 1% BSA, 50% glycerol and 0.02% sodium azide.
Concentration:	0.56 mg/ml
Purification:	Purified from mouse ascites fluids or tissue culture supernatant by affinity chromatography (protein A/G)
Conjugation:	Unconjugated
Storage:	Store at -20°C as received.
Stability:	Stable for 12 months from date of receipt.
Predicted Protein Size:	35.1 kDa
Gene Name:	aminoacylase 3
Database Link:	NP_542389 Entrez Gene 100683126 Dog Entrez Gene 711083 Monkey Entrez Gene 91703 Human Q96HD9
Synonyms:	ACY-3; HCBP1
Protein Pathways:	Alanine, aspartate and glutamate metabolism, Histidine metabolism


[View online »](#)

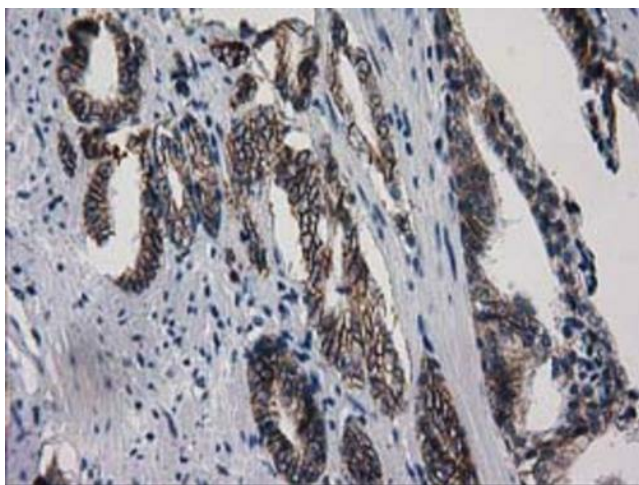
Product images:



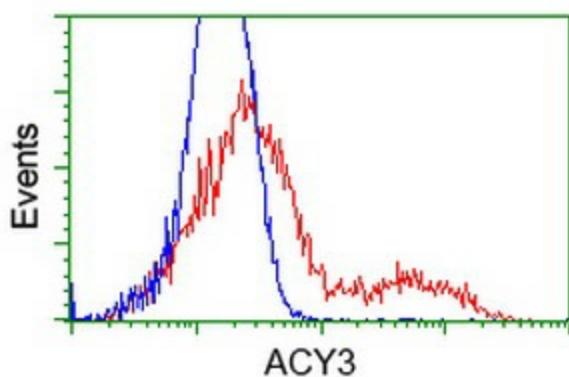
HEK293T cells were transfected with the pCMV6-ENTRY control (Left lane) or pCMV6-ENTRY ACY3 ([RC202287], Right lane) cDNA for 48 hrs and lysed. Equivalent amounts of cell lysates (5 ug per lane) were separated by SDS-PAGE and immunoblotted with anti-ACY3. Positive lysates [LY408962] (100ug) and [LC408962] (20ug) can be purchased separately from OriGene.



Immunohistochemical staining of paraffin-embedded Human prostate tissue within the normal limits using anti-ACY3 mouse monoclonal antibody. Heat-induced epitope retrieval by EDTA solution buffer pH 8.0 at 120°C for 3 min.



Immunohistochemical staining of paraffin-embedded Carcinoma of Human prostate tissue using anti-ACY3 mouse monoclonal antibody. Heat-induced epitope retrieval by EDTA solution buffer pH 8.0 at 120°C for 3 min.



HEK293T cells transfected with either [RC202287] overexpress plasmid (Red) or empty vector control plasmid (Blue) were immunostained by anti-ACY3 antibody ([TA502393]), and then analyzed by flow cytometry.