

Product datasheet for **TA502391AM**

VCAM1 Mouse Monoclonal Antibody (Biotin conjugated) [Clone ID: OTI3H10]

Product data:

Product Type:	Primary Antibodies
Clone Name:	OTI3H10
Applications:	IF, IHC, WB
Recommended Dilution:	WB 1:1000~2000, IHC 1:150, IF 1:100
Reactivity:	Human, Dog, Monkey
Host:	Mouse
Isotype:	IgG1
Clonality:	Monoclonal
Immunogen:	Full length human recombinant protein of human VCAM1 (NP_001069) produced in HEK293T cell.
Formulation:	PBS (pH 7.3) containing 1% BSA, 50% glycerol and 0.02% sodium azide.
Concentration:	0.5 mg/ml
Purification:	Purified from mouse ascites fluids or tissue culture supernatant by affinity chromatography (protein A/G)
Conjugation:	Biotin
Storage:	Store at -20°C as received.
Stability:	Stable for 12 months from date of receipt.
Predicted Protein Size:	78.7 kDa
Gene Name:	vascular cell adhesion molecule 1
Database Link:	NP_001069 Entrez Gene 403982 Dog Entrez Gene 712036 Monkey Entrez Gene 7412 Human P19320
Background:	This gene is a member of the Ig superfamily and encodes a cell surface sialoglycoprotein expressed by cytokine-activated endothelium. This type I membrane protein mediates leukocyte-endothelial cell adhesion and signal transduction, and may play a role in the development of atherosclerosis and rheumatoid arthritis. Two alternatively spliced transcripts encoding different isoforms have been described for this gene. [provided by RefSeq]



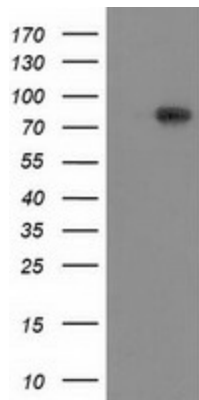
[View online »](#)

Synonyms: CD106; INCAM-100

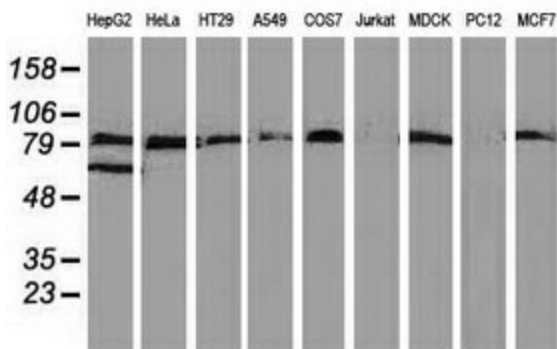
Protein Families: Druggable Genome, ES Cell Differentiation/IPS, Transmembrane

Protein Pathways: Cell adhesion molecules (CAMs), Leukocyte transendothelial migration

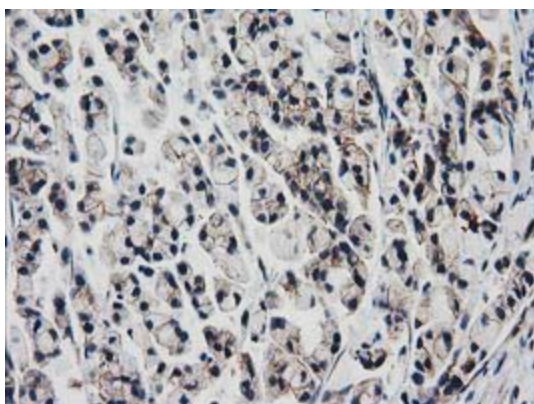
Product images:



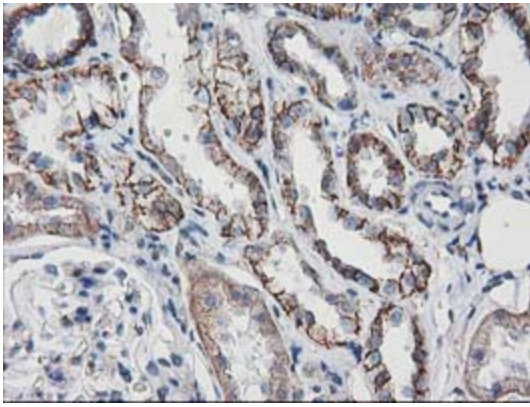
HEK293T cells were transfected with the pCMV6-ENTRY control (Cat# [PS100001], Left lane) or pCMV6-ENTRY VCAM1 (Cat# [RC209761], Right lane) cDNA for 48 hrs and lysed. Equivalent amounts of cell lysates (5 ug per lane) were separated by SDS-PAGE and immunoblotted with anti-VCAM1 (Cat# [TA502391]). Positive lysates [LY421491] (100ug) and [LC421491] (20ug) can be purchased separately from OriGene.



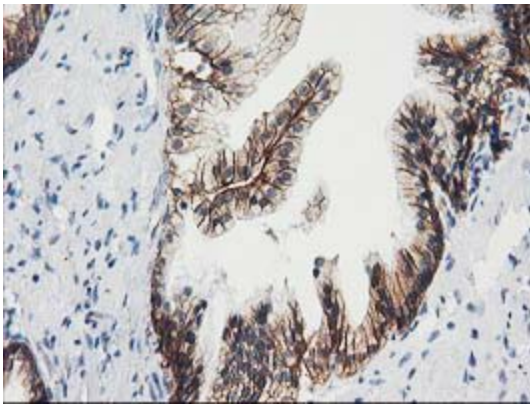
Western blot analysis of extracts (35ug) from 9 different cell lines by using anti-VCAM1 monoclonal antibody.



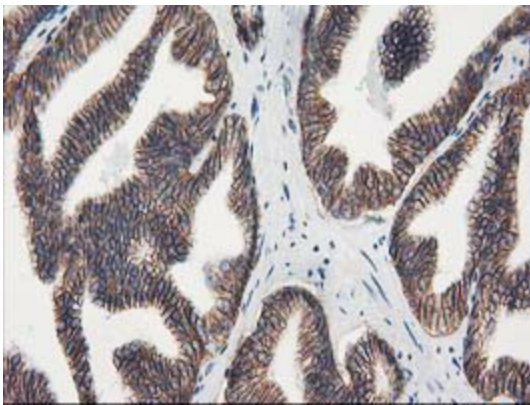
Immunohistochemical staining of paraffin-embedded Adenocarcinoma of Human colon tissue using anti-VCAM1 mouse monoclonal antibody. (Heat-induced epitope retrieval by 10mM citric buffer, pH6.0, 100°C for 10min, [TA502391])



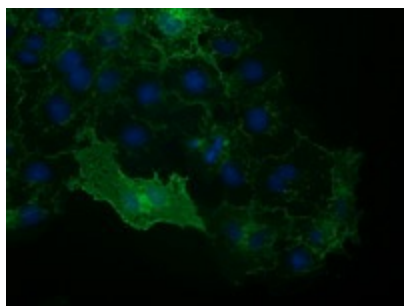
Immunohistochemical staining of paraffin-embedded Human Kidney tissue within the normal limits using anti-VCAM1 mouse monoclonal antibody. (Heat-induced epitope retrieval by 10mM citric buffer, pH6.0, 100°C for 10min, [TA502391])



Immunohistochemical staining of paraffin-embedded Human prostate tissue within the normal limits using anti-VCAM1 mouse monoclonal antibody. (Heat-induced epitope retrieval by 10mM citric buffer, pH6.0, 100°C for 10min, [TA502391])



Immunohistochemical staining of paraffin-embedded Carcinoma of Human prostate tissue using anti-VCAM1 mouse monoclonal antibody. (Heat-induced epitope retrieval by 10mM citric buffer, pH6.0, 100°C for 10min, [TA502391])



Anti-VCAM1 mouse monoclonal antibody ([TA502391]) immunofluorescent staining of COS7 cells transiently transfected by pCMV6-ENTRY VCAM1 ([RC209761]).