

Product datasheet for **TA502389BM**

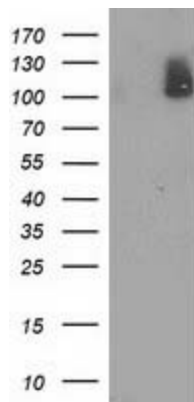
PDE2A Mouse Monoclonal Antibody (HRP conjugated) [Clone ID: OTI3A4]

Product data:

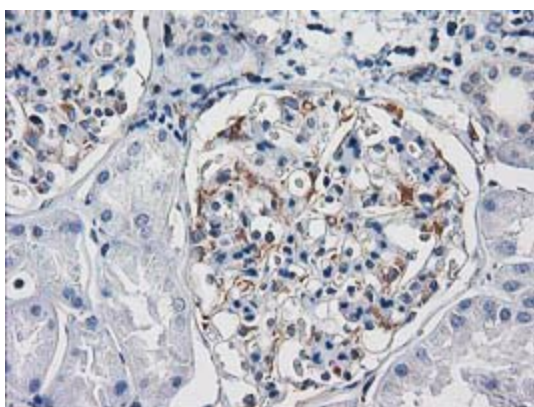
Product Type:	Primary Antibodies
Clone Name:	OTI3A4
Applications:	FC, IF, IHC, WB
Recommended Dilution:	WB 1:2000, IHC 1:150, IF 1:100, FLOW 1:100
Reactivity:	Human, Mouse, Rat
Host:	Mouse
Isotype:	IgG2b
Clonality:	Monoclonal
Immunogen:	Full length human recombinant protein of human PDE2A (NP_002590) produced in HEK293T cell.
Formulation:	PBS (pH 7.3) containing 1% BSA, 50% glycerol.
Concentration:	0.5 mg/ml
Purification:	Purified from mouse ascites fluids or tissue culture supernatant by affinity chromatography (protein A/G)
Conjugation:	HRP
Storage:	Store at -20°C as received.
Stability:	Stable for 12 months from date of receipt.
Predicted Protein Size:	105.5 kDa
Gene Name:	phosphodiesterase 2A
Database Link:	NP_002590 Entrez Gene 81743 Rat Entrez Gene 207728 Mouse Entrez Gene 5138 Human O00408
Synonyms:	CGS-PDE; cGSPDE; PDE2A1; PED2A4
Protein Families:	Druggable Genome
Protein Pathways:	Progesterone-mediated oocyte maturation, Purine metabolism



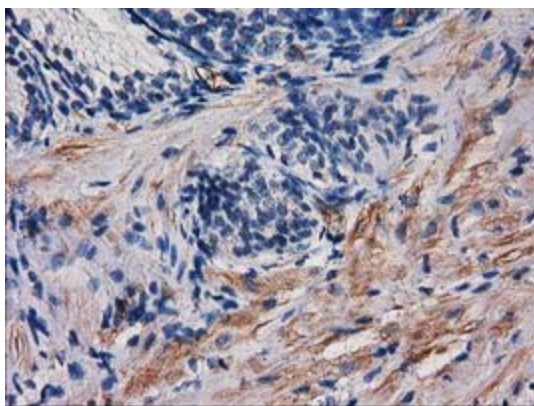
[View online »](#)

Product images:

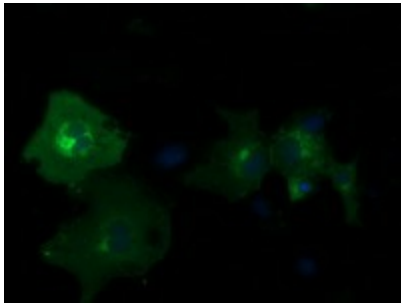
HEK293T cells were transfected with the pCMV6-ENTRY control (Left lane) or pCMV6-ENTRY PDE2A ([RC207219], Right lane) cDNA for 48 hrs and lysed. Equivalent amounts of cell lysates (5 ug per lane) were separated by SDS-PAGE and immunoblotted with anti-PDE2A. Positive lysates [LY419215] (100ug) and [LC419215] (20ug) can be purchased separately from OriGene.



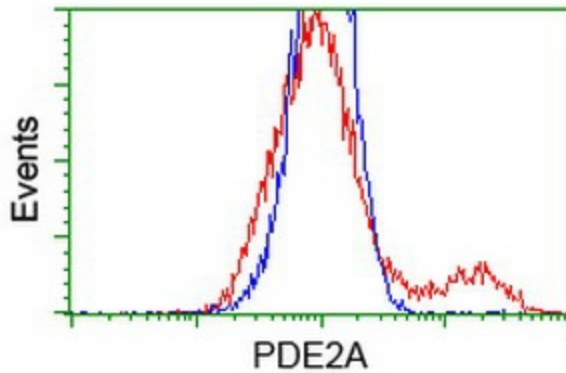
Immunohistochemical staining of paraffin-embedded Human Kidney tissue within the normal limits using anti-PDE2A mouse monoclonal antibody. (Heat-induced epitope retrieval by 10mM citric buffer, pH6.0, 100°C for 10min, [TA502389])



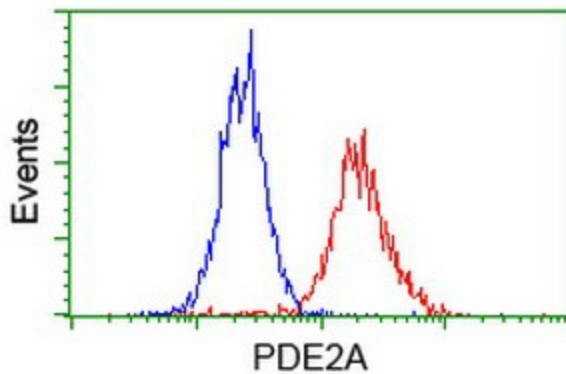
Immunohistochemical staining of paraffin-embedded Human prostate tissue within the normal limits using anti-PDE2A mouse monoclonal antibody. (Heat-induced epitope retrieval by 10mM citric buffer, pH6.0, 100°C for 10min, [TA502389])



Anti-PDE2A mouse monoclonal antibody ([TA502389]) immunofluorescent staining of COS7 cells transiently transfected by pCMV6-ENTRY PDE2A ([RC207219]).



HEK293T cells transfected with either [RC207219] overexpress plasmid (Red) or empty vector control plasmid (Blue) were immunostained by anti-PDE2A antibody ([TA502389]), and then analyzed by flow cytometry.



Flow cytometric Analysis of HeLa cells, using anti-PDE2A antibody ([TA502389]), (Red), compared to a nonspecific negative control antibody (TA50011), (Blue).