

Product datasheet for **TA502384BM**

Tristetraprolin (ZFP36) Mouse Monoclonal Antibody (HRP conjugated) [Clone ID: OTI1C8]

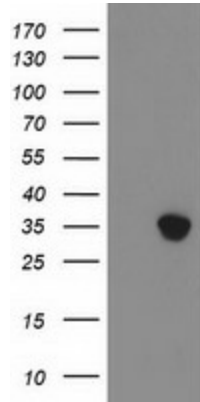
Product data:

Product Type:	Primary Antibodies
Clone Name:	OTI1C8
Applications:	FC, IF, WB
Recommended Dilution:	WB 1:500~2000, IF 1:100, FLOW 1:100
Reactivity:	Human, Mouse, Rat
Host:	Mouse
Isotype:	IgG2a
Clonality:	Monoclonal
Immunogen:	Full length human recombinant protein of human ZFP36 (NP_003898) produced in HEK293T cell.
Formulation:	PBS (pH 7.3) containing 1% BSA, 50% glycerol.
Concentration:	0.5 mg/ml
Purification:	Purified from mouse ascites fluids or tissue culture supernatant by affinity chromatography (protein A/G)
Conjugation:	HRP
Storage:	Store at -20°C as received.
Stability:	Stable for 12 months from date of receipt.
Predicted Protein Size:	33.8 kDa
Gene Name:	ZFP36 ring finger protein
Database Link:	NP_003398 Entrez Gene 7538 Human P26651
Synonyms:	G0S24; GOS24; NUP475; RNF162A; TIS11; TTP; zfp-36

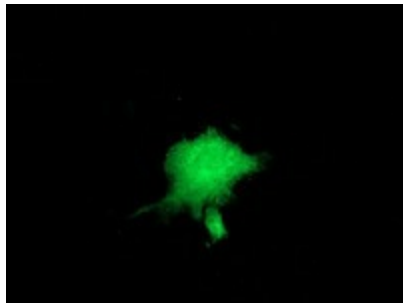


[View online »](#)

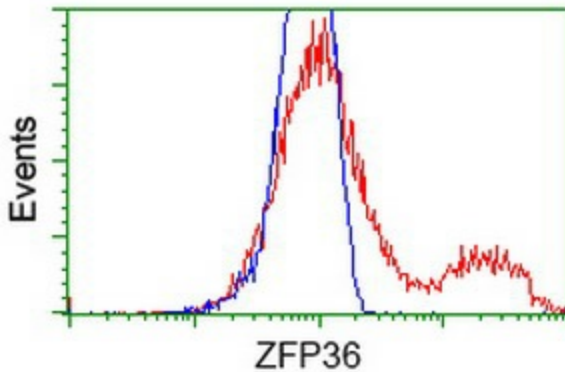
Product images:



HEK293T cells were transfected with the pCMV6-ENTRY control (Left lane) or pCMV6-ENTRY ZFP36 ([RC202049], Right lane) cDNA for 48 hrs and lysed. Equivalent amounts of cell lysates (5 ug per lane) were separated by SDS-PAGE and immunoblotted with anti-ZFP36. Positive lysates [LY401161] (100ug) and [LC401161] (20ug) can be purchased separately from OriGene.



Anti-ZFP36 mouse monoclonal antibody ([TA502384]) immunofluorescent staining of COS7 cells transiently transfected by pCMV6-ENTRY ZFP36 ([RC202049]).



HEK293T cells transfected with either [RC202049] overexpress plasmid (Red) or empty vector control plasmid (Blue) were immunostained by anti-ZFP36 antibody ([TA502384]), and then analyzed by flow cytometry.