

## Product datasheet for **TA502375S**

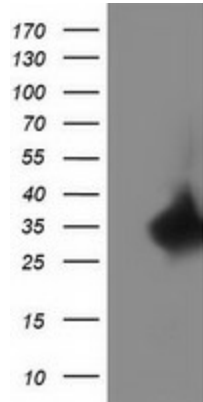
### RTF2 Mouse Monoclonal Antibody [Clone ID: OTI1E8]

#### Product data:

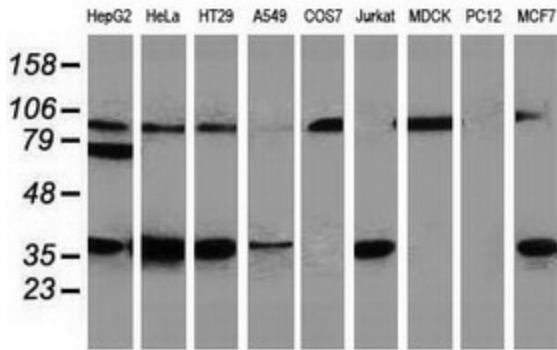
|                         |   |
|-------------------------|---|
| Product Type:           | Primary Antibodies  |
| Clone Name:             | OTI1E8  |
| Applications:           | FC, IF, IHC, WB   |
| Recommended Dilution:   | WB 1:1000~2000, IHC 1:150, IF 1:100, FLOW 1:100   |
| Reactivity:             | Human   |
| Host:                   | Mouse   |
| Isotype:                | IgG2b   |
| Clonality:              | Monoclonal  |
| Immunogen:              | Full length human recombinant protein of human C20orf43 (NP_057491) produced in HEK293T cell.             |
| Formulation:            | PBS (pH 7.3) containing 1% BSA, 50% glycerol and 0.02% sodium azide.                                      |
| Concentration:          | 0.58 mg/ml  |
| Purification:           | Purified from mouse ascites fluids or tissue culture supernatant by affinity chromatography (protein A/G) |
| Conjugation:            | Unconjugated  |
| Storage:                | Store at -20°C as received.   |
| Stability:              | Stable for 12 months from date of receipt.  |
| Predicted Protein Size: | 33.7 kDa  |
| Gene Name:              | replication termination factor 2  |
| Database Link:          | <a href="#">NP_057491</a><br><a href="#">Entrez Gene 51507 Human</a><br><a href="#">Q9BY42</a>            |
| Synonyms:               | C20orf43; CDAO5; HSPC164; SHUJUN-3  |



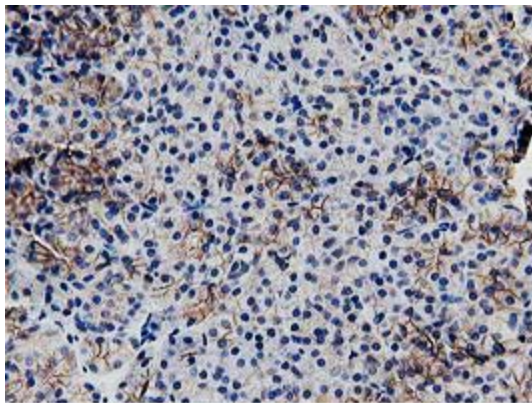
[View online »](#)

**Product images:**


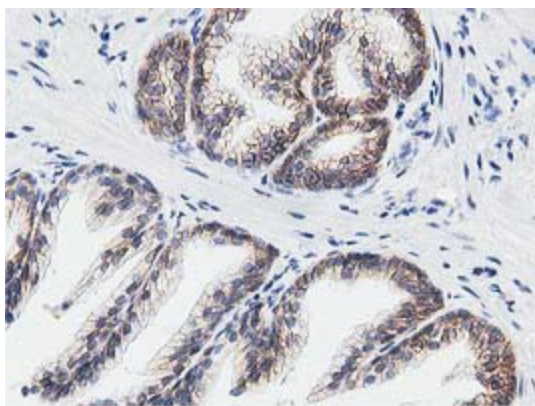
HEK293T cells were transfected with the pCMV6-ENTRY control (Cat# [PS100001], Left lane) or pCMV6-ENTRY C20orf43 (Cat# [RC201652], Right lane) cDNA for 48 hrs and lysed. Equivalent amounts of cell lysates (5 ug per lane) were separated by SDS-PAGE and immunoblotted with anti-C20orf43(Cat# [TA502375]). Positive lysates [LY414003] (100ug) and [LC414003] (20ug) can be purchased separately from OriGene.



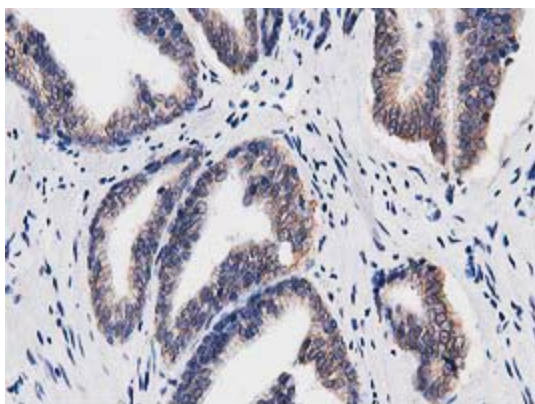
Western blot analysis of extracts (35ug) from 9 different cell lines by using anti-C20orf43 monoclonal antibody.



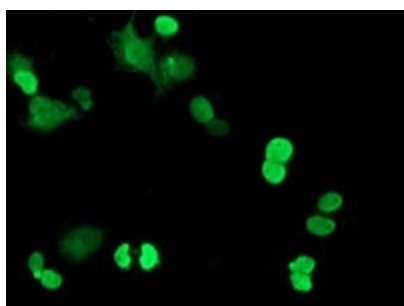
Immunohistochemical staining of paraffin-embedded Human pancreas tissue within the normal limits using anti-C20orf43 mouse monoclonal antibody. (Heat-induced epitope retrieval by 10mM citric buffer, pH6.0, 100°C for 10min, [TA502375])



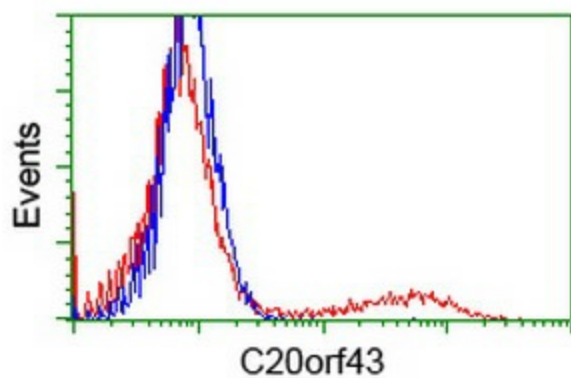
Immunohistochemical staining of paraffin-embedded Human prostate tissue within the normal limits using anti-C20orf43 mouse monoclonal antibody. (Heat-induced epitope retrieval by 10mM citric buffer, pH6.0, 100°C for 10min, [TA502375])



Immunohistochemical staining of paraffin-embedded Carcinoma of Human prostate tissue using anti-C20orf43 mouse monoclonal antibody. (Heat-induced epitope retrieval by 10mM citric buffer, pH6.0, 100°C for 10min, [TA502375])



Anti-C20orf43 mouse monoclonal antibody ([TA502375]) immunofluorescent staining of COS7 cells transiently transfected by pCMV6-ENTRY C20orf43 ([RC201652]).



HEK293T cells transfected with either [RC201652] overexpress plasmid (Red) or empty vector control plasmid (Blue) were immunostained by anti-C20orf43 antibody ([TA502375]), and then analyzed by flow cytometry.