

Product datasheet for **TA502375BM**

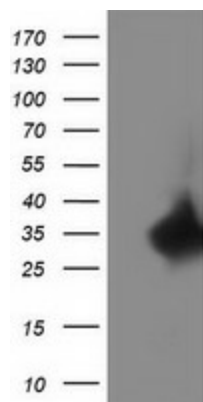
RTF2 Mouse Monoclonal Antibody (HRP conjugated) [Clone ID: OTI1E8]

Product data:

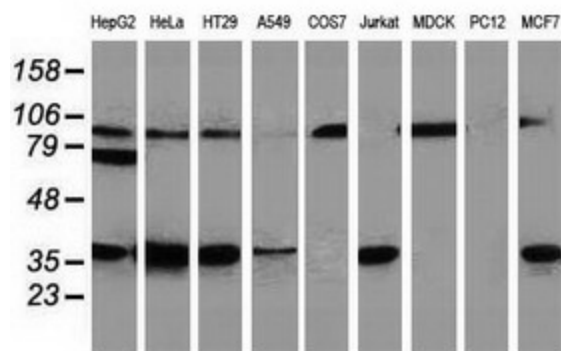
Product Type:	Primary Antibodies
Clone Name:	OTI1E8
Applications:	FC, IF, IHC, WB
Recommended Dilution:	WB 1:1000~2000, IHC 1:150, IF 1:100, FLOW 1:100
Reactivity:	Human
Host:	Mouse
Isotype:	IgG2b
Clonality:	Monoclonal
Immunogen:	Full length human recombinant protein of human C20orf43 (NP_057491) produced in HEK293T cell.
Formulation:	PBS (pH 7.3) containing 1% BSA, 50% glycerol.
Concentration:	0.5 mg/ml
Purification:	Purified from mouse ascites fluids or tissue culture supernatant by affinity chromatography (protein A/G)
Conjugation:	HRP
Storage:	Store at -20°C as received.
Stability:	Stable for 12 months from date of receipt.
Predicted Protein Size:	33.7 kDa
Gene Name:	replication termination factor 2
Database Link:	NP_057491 Entrez Gene 51507 Human Q9BY42
Synonyms:	C20orf43; CDAO5; HSPC164; SHUJUN-3



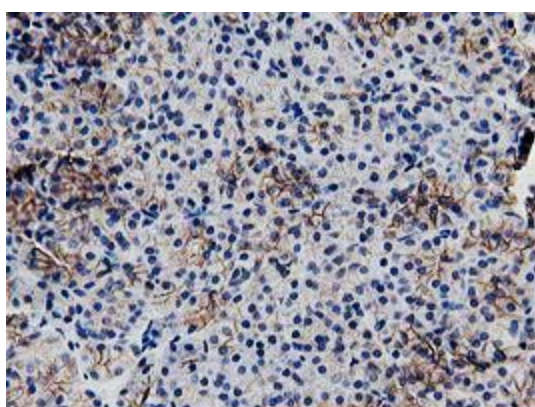
[View online »](#)

Product images:


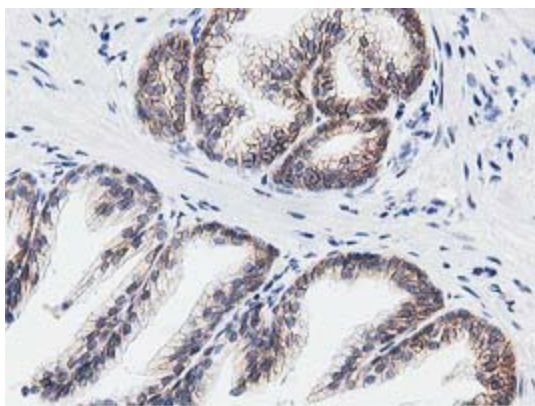
HEK293T cells were transfected with the pCMV6-ENTRY control (Cat# [PS100001], Left lane) or pCMV6-ENTRY C20orf43 (Cat# [RC201652], Right lane) cDNA for 48 hrs and lysed. Equivalent amounts of cell lysates (5 ug per lane) were separated by SDS-PAGE and immunoblotted with anti-C20orf43(Cat# [TA502375]). Positive lysates [LY414003] (100ug) and [LC414003] (20ug) can be purchased separately from OriGene.



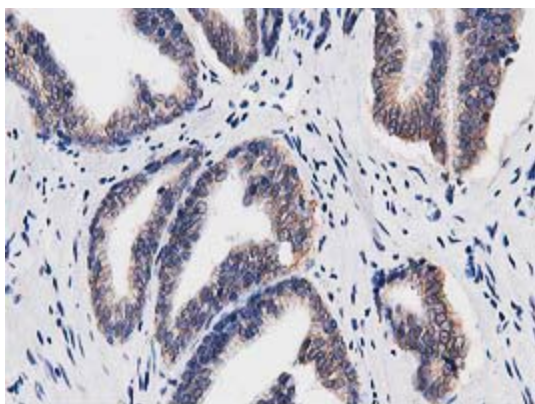
Western blot analysis of extracts (35ug) from 9 different cell lines by using anti-C20orf43 monoclonal antibody.



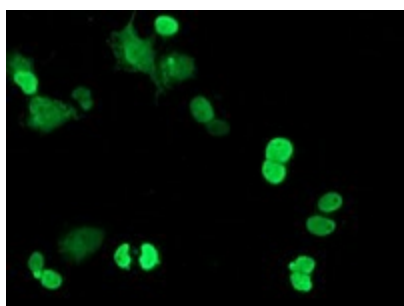
Immunohistochemical staining of paraffin-embedded Human pancreas tissue within the normal limits using anti-C20orf43 mouse monoclonal antibody. (Heat-induced epitope retrieval by 10mM citric buffer, pH6.0, 100°C for 10min, [TA502375])



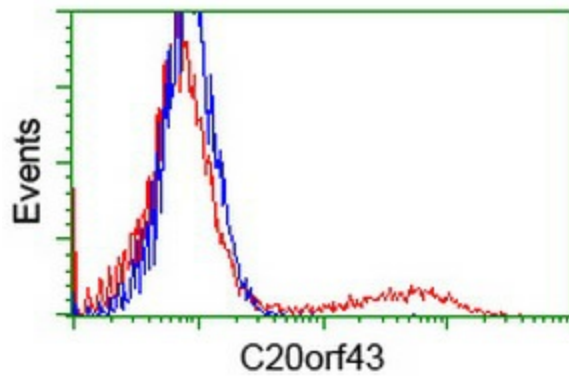
Immunohistochemical staining of paraffin-embedded Human prostate tissue within the normal limits using anti-C20orf43 mouse monoclonal antibody. (Heat-induced epitope retrieval by 10mM citric buffer, pH6.0, 100°C for 10min, [TA502375])



Immunohistochemical staining of paraffin-embedded Carcinoma of Human prostate tissue using anti-C20orf43 mouse monoclonal antibody. (Heat-induced epitope retrieval by 10mM citric buffer, pH6.0, 100°C for 10min, [TA502375])



Anti-C20orf43 mouse monoclonal antibody ([TA502375]) immunofluorescent staining of COS7 cells transiently transfected by pCMV6-ENTRY C20orf43 ([RC201652]).



HEK293T cells transfected with either [RC201652] overexpress plasmid (Red) or empty vector control plasmid (Blue) were immunostained by anti-C20orf43 antibody ([TA502375]), and then analyzed by flow cytometry.