

## Product datasheet for **TA502365AM**

### **RDH14 Mouse Monoclonal Antibody (Biotin conjugated) [Clone ID: OTI4G8]**

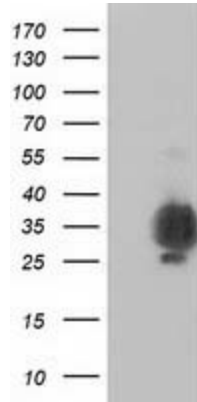
#### **Product data:**

<b>Product Type:</b>	Primary Antibodies
<b>Clone Name:</b>	OTI4G8
<b>Applications:</b>	WB
<b>Recommended Dilution:</b>	WB 1:1000~2000
<b>Reactivity:</b>	Human, Mouse, Rat
<b>Host:</b>	Mouse
<b>Isotype:</b>	IgG1
<b>Clonality:</b>	Monoclonal
<b>Immunogen:</b>	Full length human recombinant protein of human RDH14 (NP_065956) produced in HEK293T cell.
<b>Formulation:</b>	PBS (pH 7.3) containing 1% BSA, 50% glycerol and 0.02% sodium azide.
<b>Concentration:</b>	0.5 mg/ml
<b>Purification:</b>	Purified from mouse ascites fluids or tissue culture supernatant by affinity chromatography (protein A/G)
<b>Conjugation:</b>	Biotin
<b>Storage:</b>	Store at -20°C as received.
<b>Stability:</b>	Stable for 12 months from date of receipt.
<b>Predicted Protein Size:</b>	36.7 kDa
<b>Gene Name:</b>	retinol dehydrogenase 14
<b>Database Link:</b>	<a href="#">NP_065956</a> <a href="#">Entrez Gene 500629 Rat</a> <a href="#">Entrez Gene 57665 Human</a> <a href="#">Q9HBH5</a>
<b>Synonyms:</b>	PAN2; SDR7C4
<b>Protein Families:</b>	Druggable Genome, Transmembrane

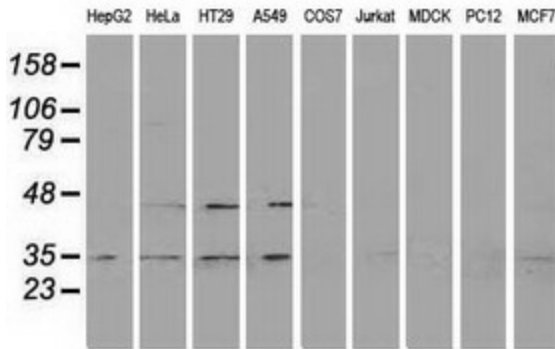


[View online »](#)

**Product images:**



HEK293T cells were transfected with the pCMV6-ENTRY control (Left lane) or pCMV6-ENTRY RDH14 ([RC203411], Right lane) cDNA for 48 hrs and lysed. Equivalent amounts of cell lysates (5 ug per lane) were separated by SDS-PAGE and immunoblotted with anti-RDH14. Positive lysates [LY412210] (100ug) and [LC412210] (20ug) can be purchased separately from OriGene.



Western blot analysis of extracts (35ug) from 9 different cell lines by using anti-RDH14 monoclonal antibody.