

## Product datasheet for **TA502364BM**

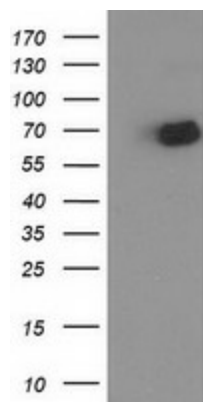
### OGFOD1 Mouse Monoclonal Antibody (HRP conjugated) [Clone ID: OTI1F4]

#### Product data:

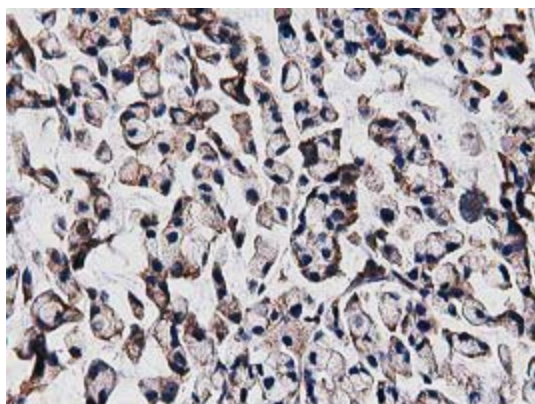
|                         |   |
|-------------------------|---|
| Product Type:           | Primary Antibodies  |
| Clone Name:             | OTI1F4  |
| Applications:           | FC, IHC, WB   |
| Recommended Dilution:   | WB 1:2000, IHC 1:150, FLOW 1:100  |
| Reactivity:             | Human   |
| Host:                   | Mouse   |
| Isotype:                | IgG1  |
| Clonality:              | Monoclonal  |
| Immunogen:              | Full length human recombinant protein of human OGFOD1 (NP_060703) produced in HEK293T cell.               |
| Formulation:            | PBS (pH 7.3) containing 1% BSA, 50% glycerol.   |
| Concentration:          | 0.5 mg/ml   |
| Purification:           | Purified from mouse ascites fluids or tissue culture supernatant by affinity chromatography (protein A/G) |
| Conjugation:            | HRP   |
| Storage:                | Store at -20°C as received.   |
| Stability:              | Stable for 12 months from date of receipt.  |
| Predicted Protein Size: | 63.1 kDa  |
| Gene Name:              | 2-oxoglutarate and iron dependent oxygenase domain containing 1   |
| Database Link:          | <a href="#">NP_060703</a><br><a href="#">Entrez Gene 55239 Human</a><br><a href="#">Q8N543</a>            |
| Synonyms:               | TPA1  |



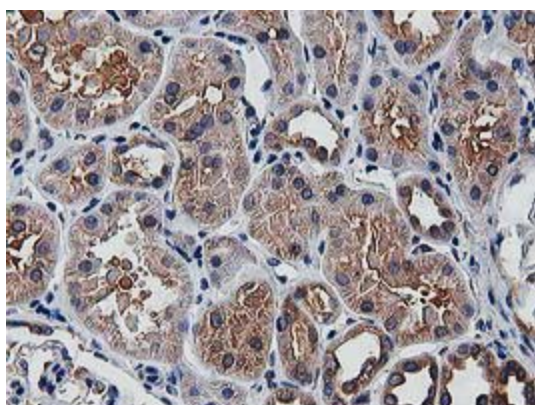
[View online »](#)

**Product images:**

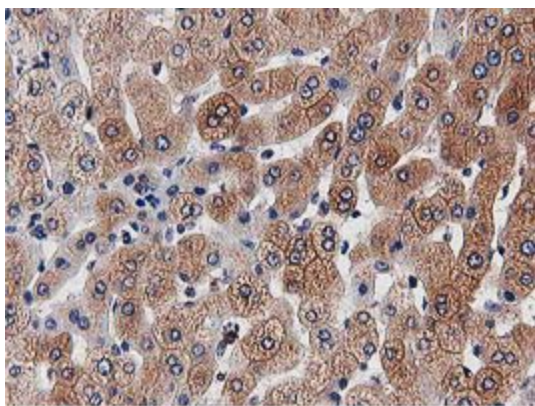
HEK293T cells were transfected with the pCMV6-ENTRY control (Cat# [PS100001], Left lane) or pCMV6-ENTRY OGFOD1 (Cat# [RC206839], Right lane) cDNA for 48 hrs and lysed. Equivalent amounts of cell lysates (5 ug per lane) were separated by SDS-PAGE and immunoblotted with anti-OGFOD1 (Cat# [TA502364]). Positive lysates [LY413213] (100ug) and [LC413213] (20ug) can be purchased separately from OriGene.



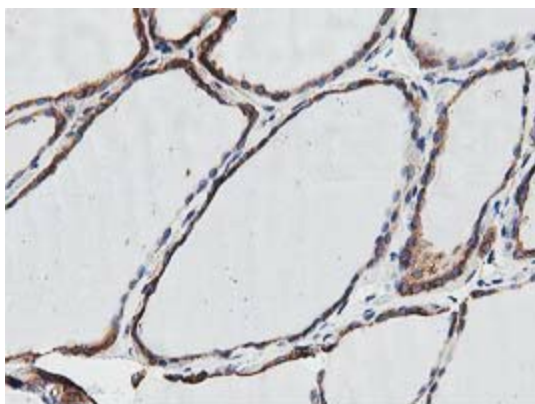
Immunohistochemical staining of paraffin-embedded Adenocarcinoma of Human colon tissue using anti-OGFOD1 mouse monoclonal antibody. (Heat-induced epitope retrieval by 10mM citric buffer, pH6.0, 100°C for 10min, [TA502364])



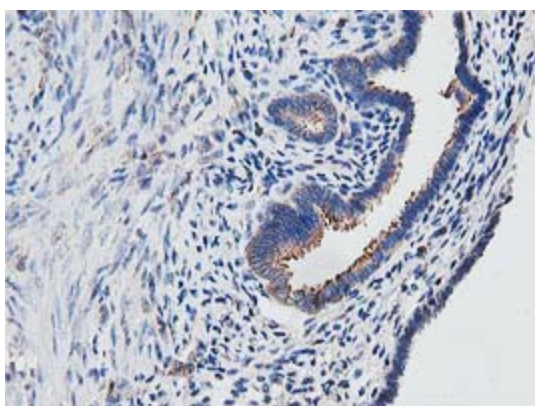
Immunohistochemical staining of paraffin-embedded Human Kidney tissue within the normal limits using anti-OGFOD1 mouse monoclonal antibody. (Heat-induced epitope retrieval by 10mM citric buffer, pH6.0, 100°C for 10min, [TA502364])



Immunohistochemical staining of paraffin-embedded Human liver tissue within the normal limits using anti-OGFOD1 mouse monoclonal antibody. (Heat-induced epitope retrieval by 10mM citric buffer, pH6.0, 100°C for 10min, [TA502364])

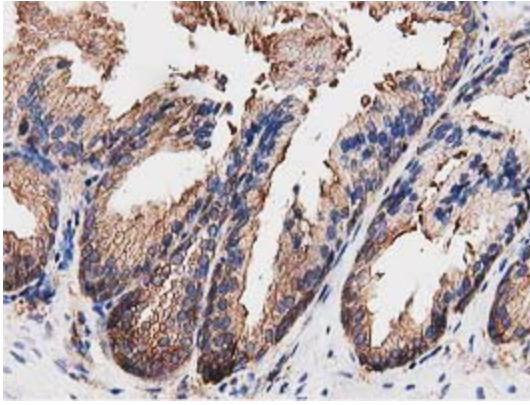


Immunohistochemical staining of paraffin-embedded Human thyroid tissue within the normal limits using anti-OGFOD1 mouse monoclonal antibody. (Heat-induced epitope retrieval by 10mM citric buffer, pH6.0, 100°C for 10min, [TA502364])

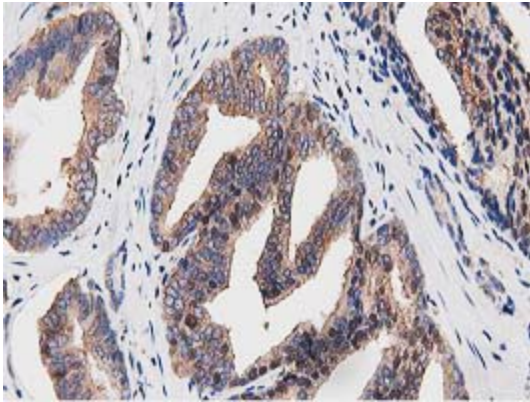


Immunohistochemical staining of paraffin-embedded Human endometrium tissue within the normal limits using anti-OGFOD1 mouse monoclonal antibody. (Heat-induced epitope retrieval by 10mM citric buffer, pH6.0, 100°C for 10min, [TA502364])

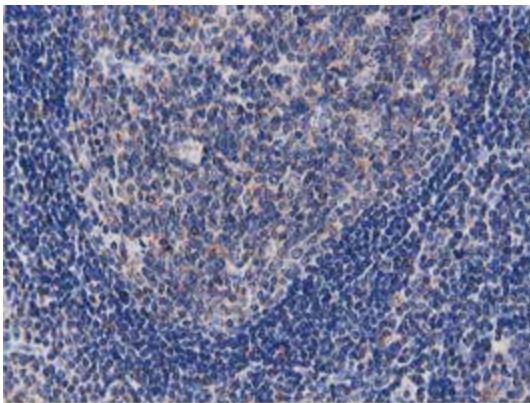




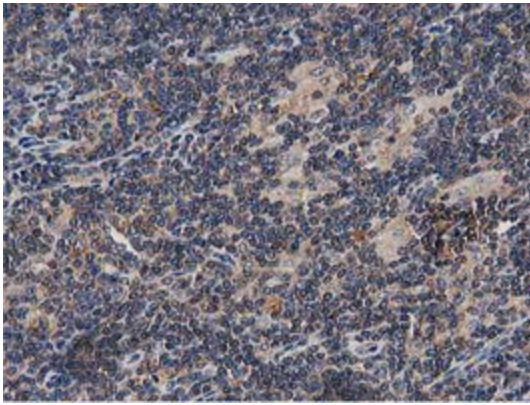
Immunohistochemical staining of paraffin-embedded Human prostate tissue within the normal limits using anti-OGFOD1 mouse monoclonal antibody. (Heat-induced epitope retrieval by 10mM citric buffer, pH6.0, 100°C for 10min, [TA502364])



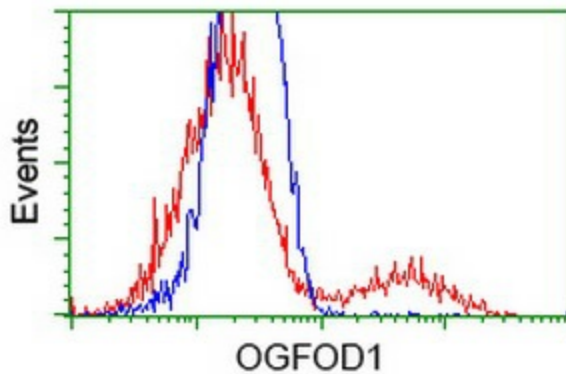
Immunohistochemical staining of paraffin-embedded Carcinoma of Human prostate tissue using anti-OGFOD1 mouse monoclonal antibody. (Heat-induced epitope retrieval by 10mM citric buffer, pH6.0, 100°C for 10min, [TA502364])



Immunohistochemical staining of paraffin-embedded Human lymph node tissue within the normal limits using anti-OGFOD1 mouse monoclonal antibody. (Heat-induced epitope retrieval by 10mM citric buffer, pH6.0, 100°C for 10min, [TA502364])



Immunohistochemical staining of paraffin-embedded Human lymphoma tissue using anti-OGFOD1 mouse monoclonal antibody. (Heat-induced epitope retrieval by 10mM citric buffer, pH6.0, 100°C for 10min, [TA502364])



HEK293T cells transfected with either [RC206839] overexpress plasmid (Red) or empty vector control plasmid (Blue) were immunostained by anti-OGFOD1 antibody ([TA502364]), and then analyzed by flow cytometry.