

## Product datasheet for **TA502364AM**

### OGFOD1 Mouse Monoclonal Antibody (Biotin conjugated) [Clone ID: OTI1F4]

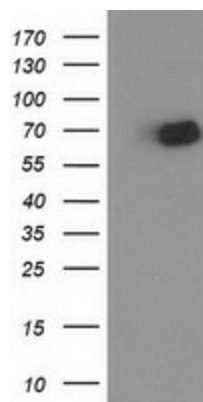
#### Product data:

Product Type:	Primary Antibodies
Clone Name:	OTI1F4
Applications:	FC, IHC, WB
Recommended Dilution:	WB 1:2000, IHC 1:150, FLOW 1:100
Reactivity:	Human
Host:	Mouse
Isotype:	IgG1
Clonality:	Monoclonal
Immunogen:	Full length human recombinant protein of human OGFOD1 (NP_060703) produced in HEK293T cell.
Formulation:	PBS (pH 7.3) containing 1% BSA, 50% glycerol and 0.02% sodium azide.
Concentration:	0.5 mg/ml
Purification:	Purified from mouse ascites fluids or tissue culture supernatant by affinity chromatography (protein A/G)
Conjugation:	Biotin
Storage:	Store at -20°C as received.
Stability:	Stable for 12 months from date of receipt.
Predicted Protein Size:	63.1 kDa
Gene Name:	2-oxoglutarate and iron dependent oxygenase domain containing 1
Database Link:	<a href="#">NP_060703</a> <a href="#">Entrez Gene 55239 Human</a> <a href="#">Q8N543</a>
Synonyms:	TPA1

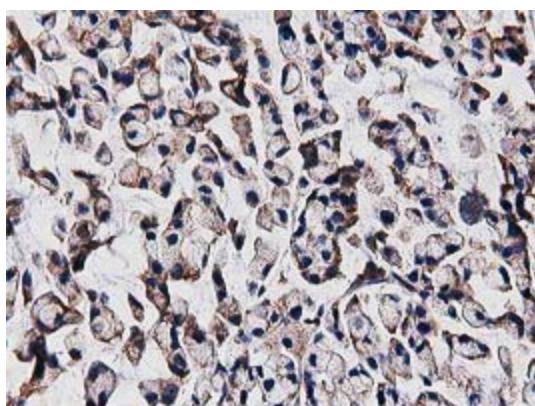


[View online »](#)

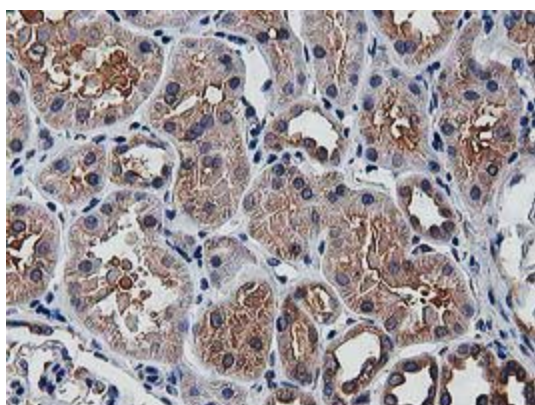
## Product images:



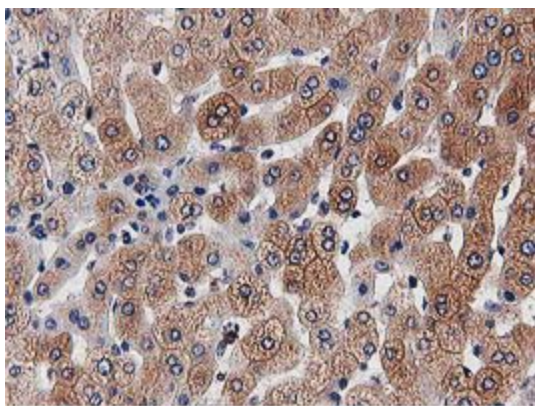
HEK293T cells were transfected with the pCMV6-ENTRY control (Cat# [PS100001], Left lane) or pCMV6-ENTRY OGFOD1 (Cat# [RC206839], Right lane) cDNA for 48 hrs and lysed. Equivalent amounts of cell lysates (5 ug per lane) were separated by SDS-PAGE and immunoblotted with anti-OGFOD1 (Cat# [TA502364]). Positive lysates [LY413213] (100ug) and [LC413213] (20ug) can be purchased separately from OriGene.



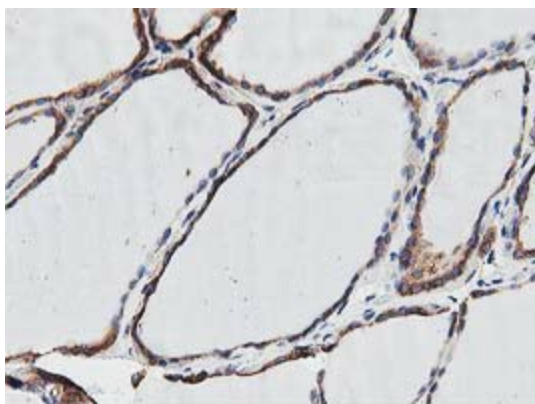
Immunohistochemical staining of paraffin-embedded Adenocarcinoma of Human colon tissue using anti-OGFOD1 mouse monoclonal antibody. (Heat-induced epitope retrieval by 10mM citric buffer, pH6.0, 100°C for 10min, [TA502364])



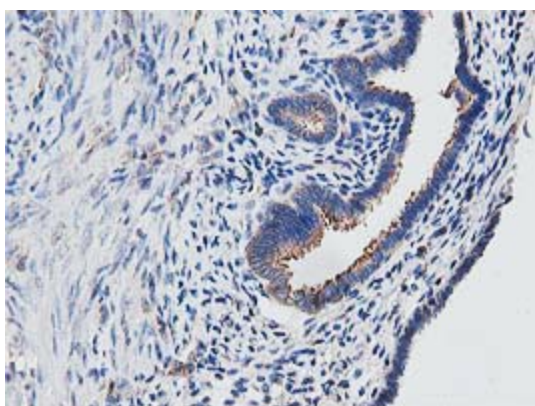
Immunohistochemical staining of paraffin-embedded Human Kidney tissue within the normal limits using anti-OGFOD1 mouse monoclonal antibody. (Heat-induced epitope retrieval by 10mM citric buffer, pH6.0, 100°C for 10min, [TA502364])



Immunohistochemical staining of paraffin-embedded Human liver tissue within the normal limits using anti-OGFOD1 mouse monoclonal antibody. (Heat-induced epitope retrieval by 10mM citric buffer, pH6.0, 100°C for 10min, [TA502364])

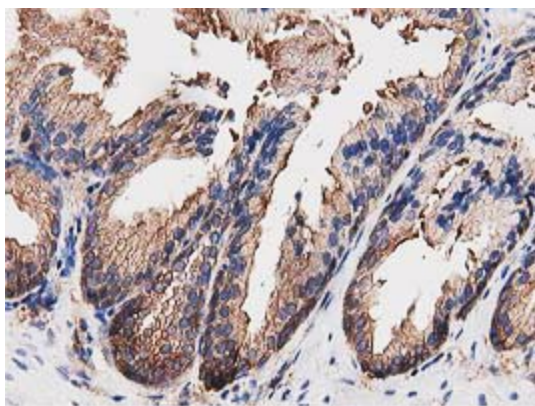


Immunohistochemical staining of paraffin-embedded Human thyroid tissue within the normal limits using anti-OGFOD1 mouse monoclonal antibody. (Heat-induced epitope retrieval by 10mM citric buffer, pH6.0, 100°C for 10min, [TA502364])

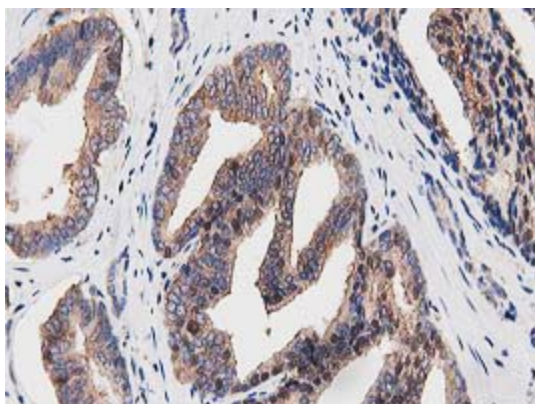


Immunohistochemical staining of paraffin-embedded Human endometrium tissue within the normal limits using anti-OGFOD1 mouse monoclonal antibody. (Heat-induced epitope retrieval by 10mM citric buffer, pH6.0, 100°C for 10min, [TA502364])

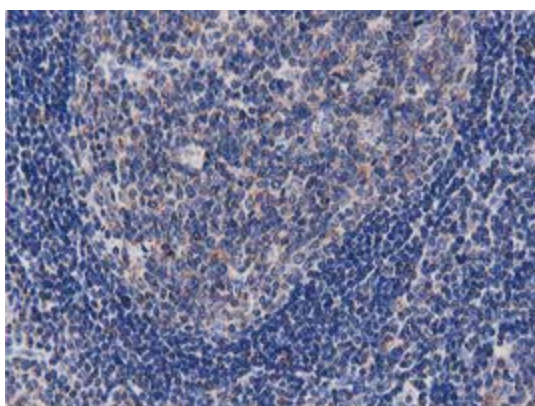




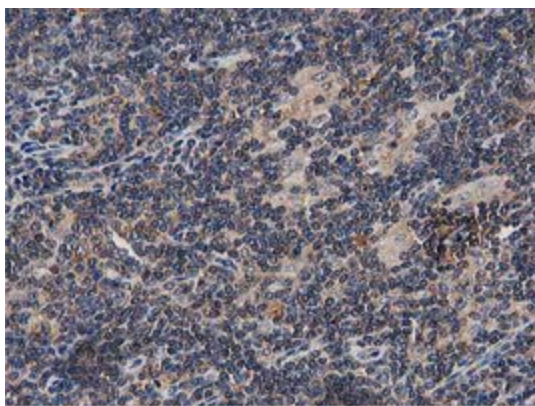
Immunohistochemical staining of paraffin-embedded Human prostate tissue within the normal limits using anti-OGFOD1 mouse monoclonal antibody. (Heat-induced epitope retrieval by 10mM citric buffer, pH6.0, 100°C for 10min, [TA502364])



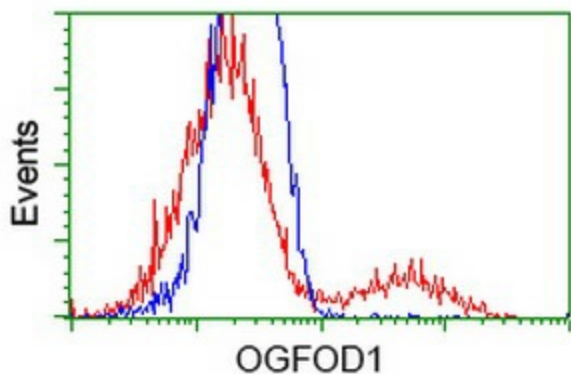
Immunohistochemical staining of paraffin-embedded Carcinoma of Human prostate tissue using anti-OGFOD1 mouse monoclonal antibody. (Heat-induced epitope retrieval by 10mM citric buffer, pH6.0, 100°C for 10min, [TA502364])



Immunohistochemical staining of paraffin-embedded Human lymph node tissue within the normal limits using anti-OGFOD1 mouse monoclonal antibody. (Heat-induced epitope retrieval by 10mM citric buffer, pH6.0, 100°C for 10min, [TA502364])



Immunohistochemical staining of paraffin-embedded Human lymphoma tissue using anti-OGFOD1 mouse monoclonal antibody. (Heat-induced epitope retrieval by 10mM citric buffer, pH6.0, 100°C for 10min, [TA502364])



HEK293T cells transfected with either [RC206839] overexpress plasmid (Red) or empty vector control plasmid (Blue) were immunostained by anti-OGFOD1 antibody ([TA502364]), and then analyzed by flow cytometry.