

## Product datasheet for **TA502362BM**

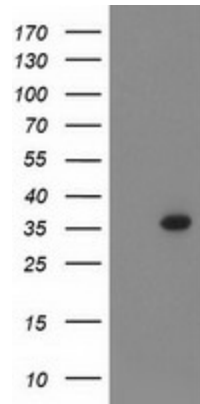
### PIH1D2 Mouse Monoclonal Antibody (HRP conjugated) [Clone ID: OTI1A2]

#### Product data:

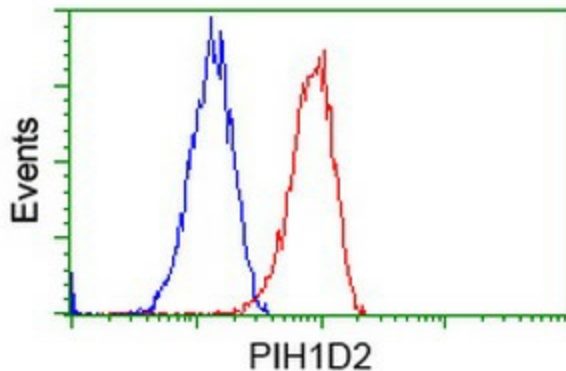
|                         |   |
|-------------------------|---|
| Product Type:           | Primary Antibodies  |
| Clone Name:             | OTI1A2  |
| Applications:           | FC, WB  |
| Recommended Dilution:   | WB 1:2000, FLOW 1:100   |
| Reactivity:             | Human   |
| Host:                   | Mouse   |
| Isotype:                | IgG1  |
| Clonality:              | Monoclonal  |
| Immunogen:              | Full length human recombinant protein of human PIH1D2 (NP_620144) produced in E.coli.                     |
| Formulation:            | PBS (pH 7.3) containing 1% BSA, 50% glycerol.   |
| Concentration:          | 0.5 mg/ml   |
| Purification:           | Purified from mouse ascites fluids or tissue culture supernatant by affinity chromatography (protein A/G) |
| Conjugation:            | HRP   |
| Storage:                | Store at -20°C as received.   |
| Stability:              | Stable for 12 months from date of receipt.  |
| Predicted Protein Size: | 35.8 kDa  |
| Gene Name:              | PIH1 domain containing 2  |
| Database Link:          | <a href="#">NP_620144</a><br><a href="#">Entrez Gene 120379 Human</a><br><a href="#">Q8WWB5</a>           |
| Synonyms:               | PIH1 domain containing 2  |



[View online »](#)

**Product images:**

HEK293T cells were transfected with the pCMV6-ENTRY control (Left lane) or pCMV6-ENTRY PIH1D2 ([RC205039], Right lane) cDNA for 48 hrs and lysed. Equivalent amounts of cell lysates (5 ug per lane) were separated by SDS-PAGE and immunoblotted with anti-PIH1D2. Positive lysates [LY408526] (100ug) and [LC408526] (20ug) can be purchased separately from OriGene.



Flow cytometric Analysis of Jurkat cells, using anti-PIH1D2 antibody ([TA502362]), (Red), compared to a nonspecific negative control antibody (TA50011), (Blue).