

## Product datasheet for **TA502360S**

### VCAM1 Mouse Monoclonal Antibody [Clone ID: OTI4E8]

#### Product data:

Product Type:	Primary Antibodies
Clone Name:	OTI4E8
Applications:	IHC, WB
Recommended Dilution:	WB 1:500~2000, IHC 1:150
Reactivity:	Human
Host:	Mouse
Isotype:	IgG1
Clonality:	Monoclonal
Immunogen:	Full length human recombinant protein of human VCAM1(NP_001069) produced in HEK293T cell.
Formulation:	PBS (pH 7.3) containing 1% BSA, 50% glycerol and 0.02% sodium azide.
Concentration:	1 mg/ml
Purification:	Purified from mouse ascites fluids or tissue culture supernatant by affinity chromatography (protein A/G)
Conjugation:	Unconjugated
Storage:	Store at -20°C as received.
Stability:	Stable for 12 months from date of receipt.
Predicted Protein Size:	78.7 kDa
Gene Name:	vascular cell adhesion molecule 1
Database Link:	<a href="#">NP_001069</a> <a href="#">Entrez Gene 7412 Human</a> <a href="#">P19320</a>
Background:	This gene is a member of the Ig superfamily and encodes a cell surface sialoglycoprotein expressed by cytokine-activated endothelium. This type I membrane protein mediates leukocyte-endothelial cell adhesion and signal transduction, and may play a role in the development of atherosclerosis and rheumatoid arthritis. Three alternatively spliced transcripts encoding different isoforms have been described for this gene. [provided by RefSeq]

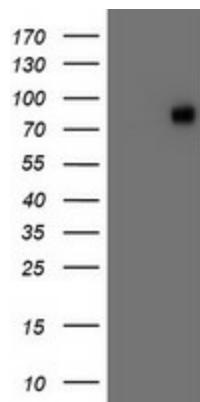


[View online »](#)

**Synonyms:** CD106; INCAM-100

**Protein Families:** Druggable Genome, ES Cell Differentiation/IPS, Transmembrane

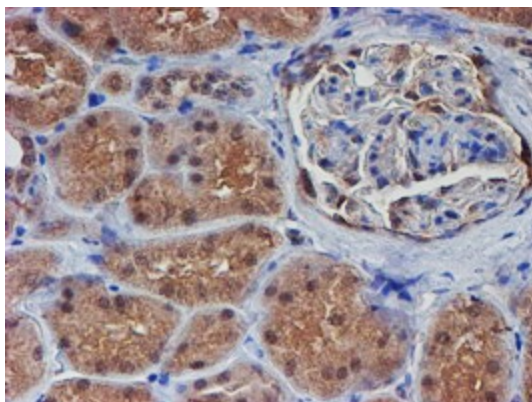
**Protein Pathways:** Cell adhesion molecules (CAMs), Leukocyte transendothelial migration

**Product images:**

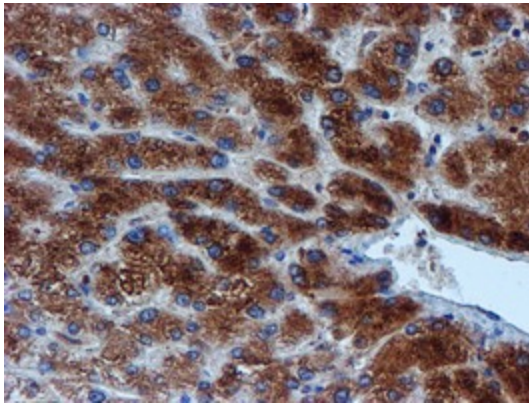
HEK293T cells were transfected with the pCMV6-ENTRY control (Left lane) or pCMV6-ENTRY VCAM1 ([RC209761], Right lane) cDNA for 48 hrs and lysed. Equivalent amounts of cell lysates (5 ug per lane) were separated by SDS-PAGE and immunoblotted with anti-VCAM1. Positive lysates [LY421491] (100ug) and [LC421491] (20ug) can be purchased separately from OriGene.



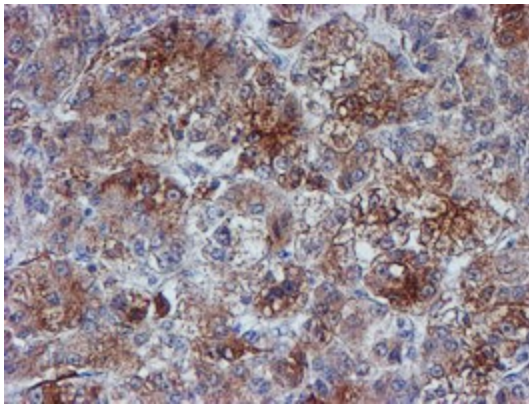
Immunohistochemical staining of paraffin-embedded Human breast tissue within the normal limits using anti-VCAM1 mouse monoclonal antibody. (Heat-induced epitope retrieval by 10mM citric buffer, pH6.0, 100°C for 10min, [TA502360])



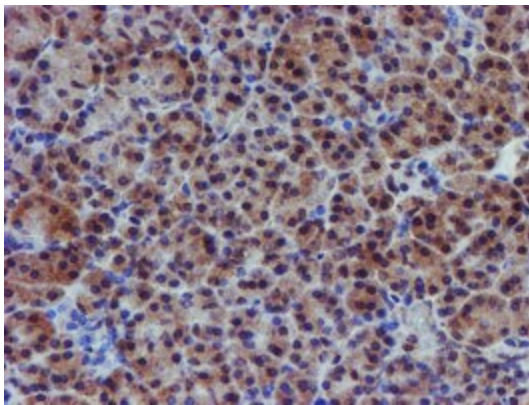
Immunohistochemical staining of paraffin-embedded Human Kidney tissue within the normal limits using anti-VCAM1 mouse monoclonal antibody. (Heat-induced epitope retrieval by 10mM citric buffer, pH6.0, 100°C for 10min, [TA502360])



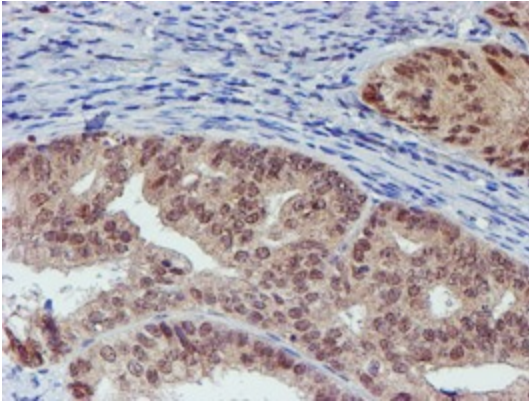
Immunohistochemical staining of paraffin-embedded Human liver tissue within the normal limits using anti-VCAM1 mouse monoclonal antibody. (Heat-induced epitope retrieval by 10mM citric buffer, pH6.0, 100°C for 10min, [TA502360])



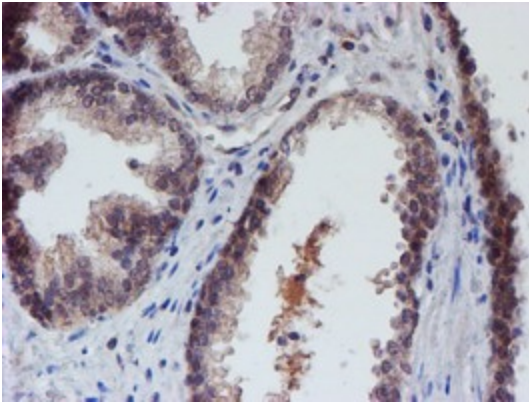
Immunohistochemical staining of paraffin-embedded Carcinoma of Human liver tissue using anti-VCAM1 mouse monoclonal antibody. (Heat-induced epitope retrieval by 10mM citric buffer, pH6.0, 100°C for 10min, [TA502360])



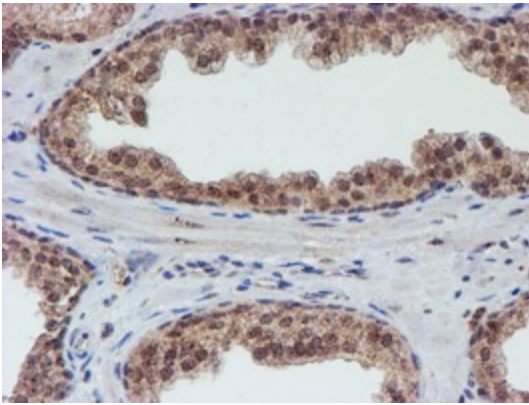
Immunohistochemical staining of paraffin-embedded Human pancreas tissue within the normal limits using anti-VCAM1 mouse monoclonal antibody. (Heat-induced epitope retrieval by 10mM citric buffer, pH6.0, 100°C for 10min, [TA502360])



Immunohistochemical staining of paraffin-embedded Adenocarcinoma of Human endometrium tissue using anti-VCAM1 mouse monoclonal antibody. (Heat-induced epitope retrieval by 10mM citric buffer, pH6.0, 100°C for 10min, [TA502360])

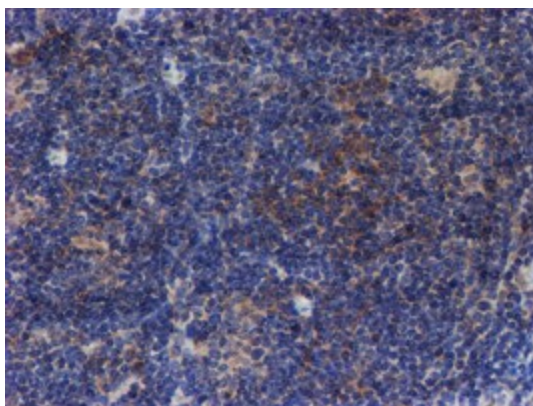


Immunohistochemical staining of paraffin-embedded Human prostate tissue within the normal limits using anti-VCAM1 mouse monoclonal antibody. (Heat-induced epitope retrieval by 10mM citric buffer, pH6.0, 100°C for 10min, [TA502360])

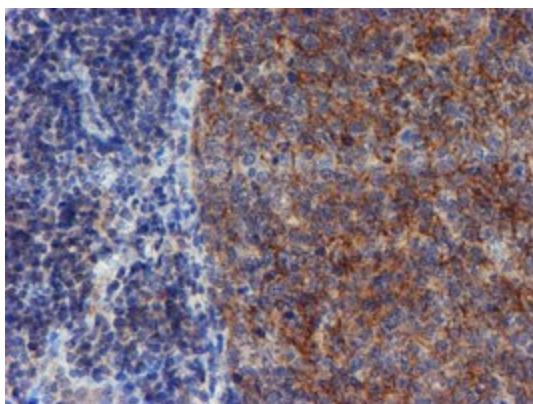


Immunohistochemical staining of paraffin-embedded Carcinoma of Human prostate tissue using anti-VCAM1 mouse monoclonal antibody. (Heat-induced epitope retrieval by 10mM citric buffer, pH6.0, 100°C for 10min, [TA502360])





Immunohistochemical staining of paraffin-embedded Human lymphoma tissue using anti-VCAM1 mouse monoclonal antibody. (Heat-induced epitope retrieval by 10mM citric buffer, pH6.0, 100°C for 10min, [TA502360])



Immunohistochemical staining of paraffin-embedded Human tonsil within the normal limits using anti-VCAM1 mouse monoclonal antibody. (Heat-induced epitope retrieval by 10mM citric buffer, pH6.0, 100°C for 10min, [TA502360])