

Product datasheet for **TA502357M**

Aquaporin 1 (AQP1) Mouse Monoclonal Antibody [Clone ID: OTI2D10]

Product data:

Product Type:	Primary Antibodies
Clone Name:	OTI2D10
Applications:	FC, IF, IHC, WB
Recommended Dilution:	WB 1:2000, IHC 1:150, IF 1:100, FLOW 1:100
Reactivity:	Human
Host:	Mouse
Isotype:	IgG1
Clonality:	Monoclonal
Immunogen:	Full length human recombinant protein of human AQP1 (NP_932766) produced in HEK293T cell.
Formulation:	PBS (pH 7.3) containing 1% BSA, 50% glycerol and 0.02% sodium azide.
Concentration:	0.47 mg/ml
Purification:	Purified from mouse ascites fluids or tissue culture supernatant by affinity chromatography (protein A/G)
Conjugation:	Unconjugated
Storage:	Store at -20°C as received.
Stability:	Stable for 12 months from date of receipt.
Predicted Protein Size:	28.3 kDa
Gene Name:	aquaporin 1 (Colton blood group)
Database Link:	NP_932766 Entrez Gene 358 Human P29972



[View online »](#)

Background:

Aquaporins are a family of small integral membrane proteins related to the major intrinsic protein (MIP or AQP0). This gene encodes an aquaporin which functions as a molecular water channel protein. It is a homotetramer with 6 bilayer spanning domains and N-glycosylation sites. The protein physically resembles channel proteins and is abundant in erythrocytes and renal tubes. The gene encoding this aquaporin is a possible candidate for disorders involving imbalance in ocular fluid movement. Several transcript variants encoding different isoforms have been found for this gene. [provided by RefSeq]

Synonyms:

AQP-CHIP; CHIP28; CO

Protein Families:

Druggable Genome, Ion Channels: Other, Transmembrane

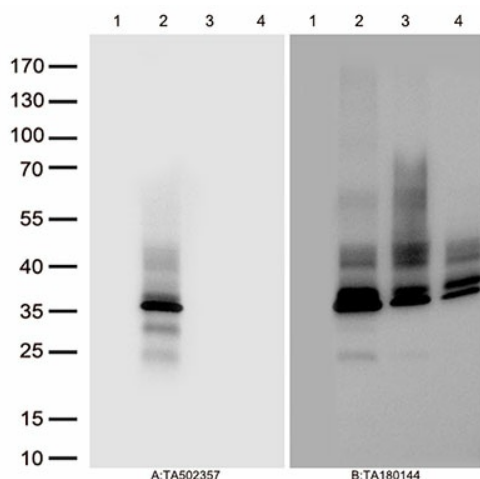
Product images:


Figure A, Western blot analysis of overexpressed lysates(25ug per lane) from HEK293T cells transfected with empty plasmid ([PS100001], lane 1) , human AQP1 plasmid ([RC205304], lane 2), mouse AQP1 plasmid ([MR203566], lane 3) , rat AQP1 plasmid ([RR203590], lane 4) using anti-AQP1 antibody [TA502357] (1:500). Figure B, Western blot analysis of the same samples as figure A with anti-DDK antibody ([TA180144], 1:1000)

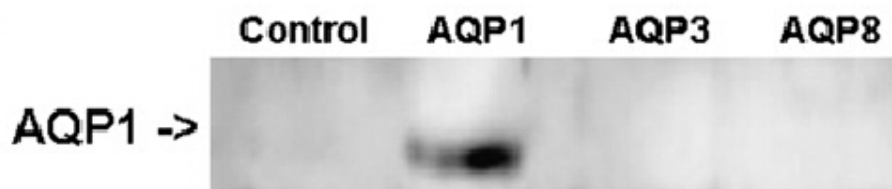
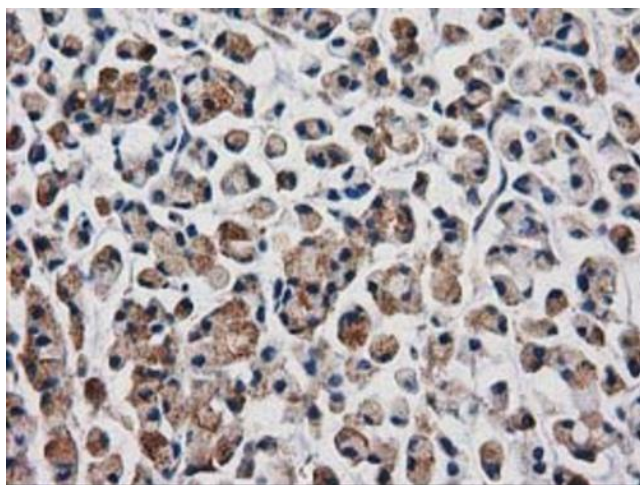
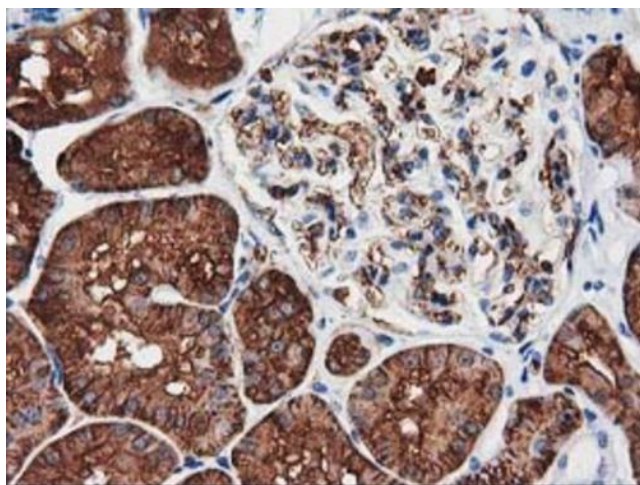


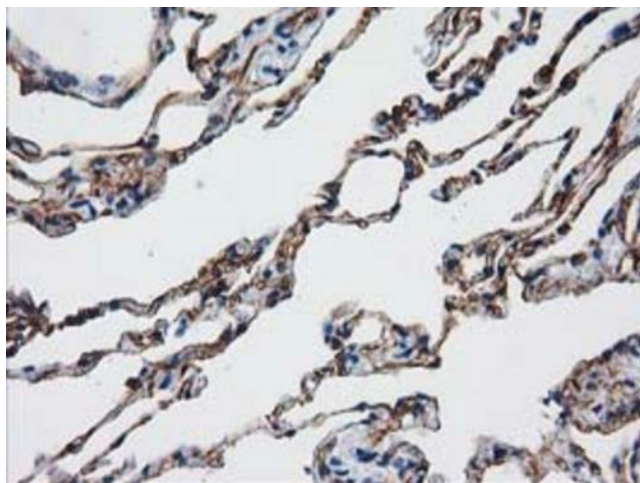
Figure from citation: Western Blot of AQP1 protein level by using anti-AQP1 antibody in human B1647 cells. [View Citation](#)



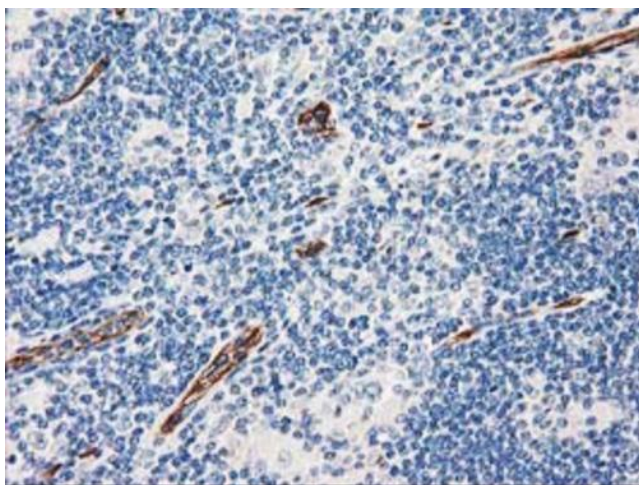
Immunohistochemical staining of paraffin-embedded Adenocarcinoma of Human colon tissue using anti-AQP1 mouse monoclonal antibody. Heat-induced epitope retrieval by EDTA solution buffer pH 8.0 at 120°C for 3 min.



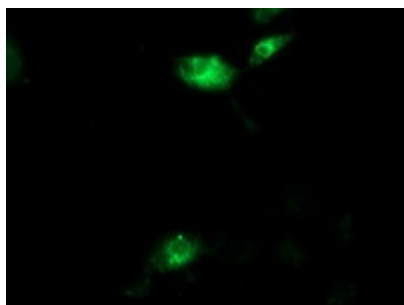
Immunohistochemical staining of paraffin-embedded Human Kidney tissue within the normal limits using anti-AQP1 mouse monoclonal antibody. Heat-induced epitope retrieval by EDTA solution buffer pH 8.0 at 120°C for 3 min.



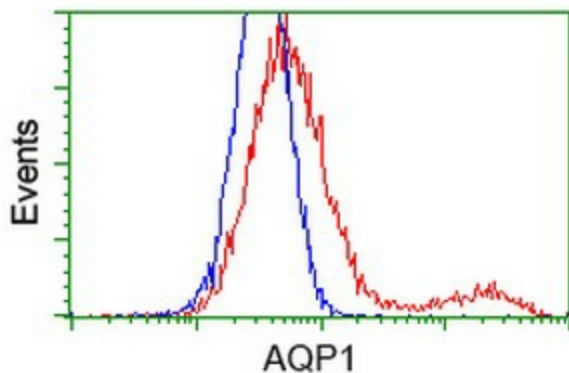
Immunohistochemical staining of paraffin-embedded Human lung tissue within the normal limits using anti-AQP1 mouse monoclonal antibody. Heat-induced epitope retrieval by EDTA solution buffer pH 8.0 at 120°C for 3 min.



Immunohistochemical staining of paraffin-embedded Human lymphoma tissue using anti-AQP1 mouse monoclonal antibody. Heat-induced epitope retrieval by EDTA solution buffer pH 8.0 at 120°C for 3 min.



Anti-AQP1 mouse monoclonal antibody (TA502357) immunofluorescent staining of COS7 cells transiently transfected by pCMV6-ENTRY AQP1 (RC205304).



HEK293T cells transfected with either [RC205304] overexpress plasmid (Red) or empty vector control plasmid (Blue) were immunostained by anti-AQP1 antibody (TA502357), and then analyzed by flow cytometry.