

Product datasheet for **TA502349**

PDE2A Mouse Monoclonal Antibody [Clone ID: OTI2A5]

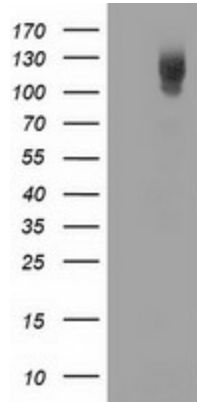
Product data:

| | |
|--------------------------------|--|
| Product Type: | Primary Antibodies |
| Clone Name: | OTI2A5 |
| Applications: | FC, IF, WB |
| Recommended Dilution: | WB 1:2000, IF 1:100, FLOW 1:100 |
| Reactivity: | Human, Mouse, Rat |
| Host: | Mouse |
| Isotype: | IgG1 |
| Clonality: | Monoclonal |
| Immunogen: | Full length human recombinant protein of human PDE2A (NP_002590) produced in HEK293T cell. |
| Formulation: | PBS (pH 7.3) containing 1% BSA, 50% glycerol and 0.02% sodium azide. |
| Concentration: | 0.72 mg/ml |
| Purification: | Purified from mouse ascites fluids or tissue culture supernatant by affinity chromatography (protein A/G) |
| Conjugation: | Unconjugated |
| Storage: | Store at -20°C as received. |
| Stability: | Stable for 12 months from date of receipt. |
| Predicted Protein Size: | 105.5 kDa |
| Gene Name: | phosphodiesterase 2A |
| Database Link: | NP_002590 Entrez Gene 81743 Rat Entrez Gene 207728 Mouse Entrez Gene 5138 Human O00408 |
| Synonyms: | CGS-PDE; cGSPDE; PDE2A1; PED2A4 |
| Protein Families: | Druggable Genome |
| Protein Pathways: | Progesterone-mediated oocyte maturation, Purine metabolism |

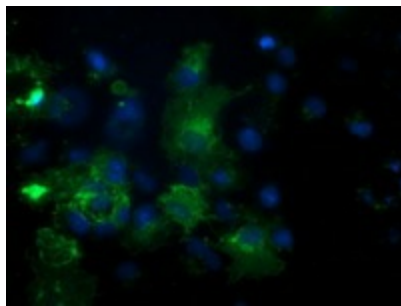


[View online »](#)

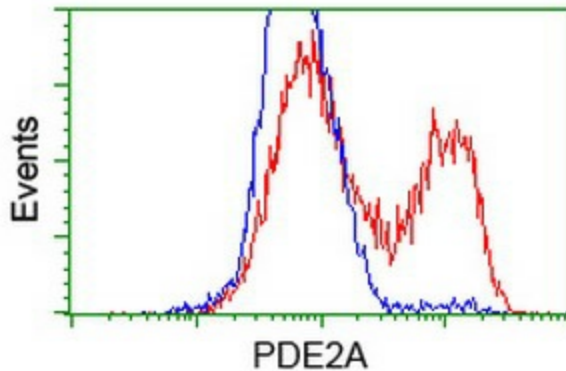
Product images:



HEK293T cells were transfected with the pCMV6-ENTRY control (Left lane) or pCMV6-ENTRY PDE2A ([RC207219], Right lane) cDNA for 48 hrs and lysed. Equivalent amounts of cell lysates (5 ug per lane) were separated by SDS-PAGE and immunoblotted with anti-PDE2A. Positive lysates [LY419215] (100ug) and [LC419215] (20ug) can be purchased separately from OriGene.



Anti-PDE2A mouse monoclonal antibody (TA502349) immunofluorescent staining of COS7 cells transiently transfected by pCMV6-ENTRY PDE2A ([RC207219]).



HEK293T cells transfected with either [RC207219] overexpress plasmid (Red) or empty vector control plasmid (Blue) were immunostained by anti-PDE2A antibody (TA502349), and then analyzed by flow cytometry.