

Product datasheet for **TA502344AM**

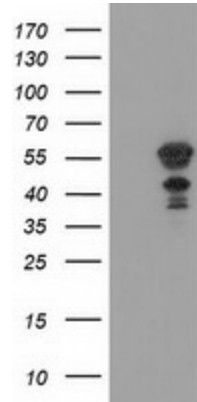
KATNAL1 Mouse Monoclonal Antibody (Biotin conjugated) [Clone ID: OTI1A7]

Product data:

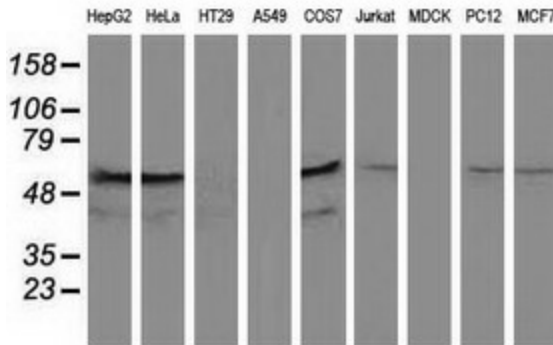
Product Type:	Primary Antibodies
Clone Name:	OTI1A7
Applications:	FC, IHC, WB
Recommended Dilution:	WB 1:500~2000, IHC 1:150, FLOW 1:100
Reactivity:	Human, Rat, Monkey, Mouse
Host:	Mouse
Isotype:	IgG1
Clonality:	Monoclonal
Immunogen:	Full length human recombinant protein of human KATNAL1 (NP_115492) produced in HEK293T cell.
Formulation:	PBS (pH 7.3) containing 1% BSA, 50% glycerol and 0.02% sodium azide.
Concentration:	0.5 mg/ml
Purification:	Purified from mouse ascites fluids or tissue culture supernatant by affinity chromatography (protein A/G)
Conjugation:	Biotin
Storage:	Store at -20°C as received.
Stability:	Stable for 12 months from date of receipt.
Predicted Protein Size:	55.2 kDa
Gene Name:	katanin catalytic subunit A1 like 1
Database Link:	NP_115492 Entrez Gene 288449 Rat Entrez Gene 712636 Monkey Entrez Gene 84056 Human Q9BW62
Synonyms:	MGC2599



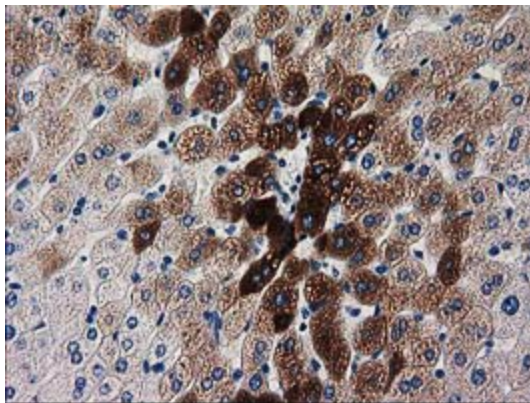
[View online »](#)

Product images:


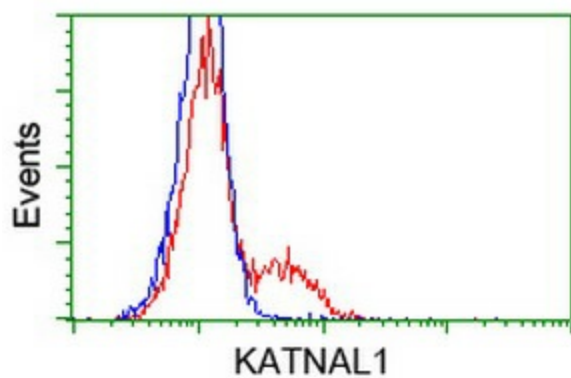
HEK293T cells were transfected with the pCMV6-ENTRY control (Left lane) or pCMV6-ENTRY KATNAL1 ([RC200828], Right lane) cDNA for 48 hrs and lysed. Equivalent amounts of cell lysates (5 ug per lane) were separated by SDS-PAGE and immunoblotted with anti-KATNAL1. Positive lysates [LY403145] (100ug) and [LC403145] (20ug) can be purchased separately from OriGene.



Western blot analysis of extracts (35ug) from 9 different cell lines by using anti-KATNAL1 monoclonal antibody (HepG2: human; HeLa: human; SVT2: mouse; A549: human; COS7: monkey; Jurkat: human; MDCK: canine; PC12: rat; MCF7: human).



Immunohistochemical staining of paraffin-embedded Human liver tissue within the normal limits using anti-KATNAL1 mouse monoclonal antibody. (Heat-induced epitope retrieval by 10mM citric buffer, pH6.0, 100°C for 10min, [TA502344])



HEK293T cells transfected with either [RC200828] overexpress plasmid (Red) or empty vector control plasmid (Blue) were immunostained by anti-KATNAL1 antibody ([TA502344]), and then analyzed by flow cytometry.