

## Product datasheet for **TA502332S**

### NUDT6 Mouse Monoclonal Antibody [Clone ID: OTI7F4]

#### Product data:

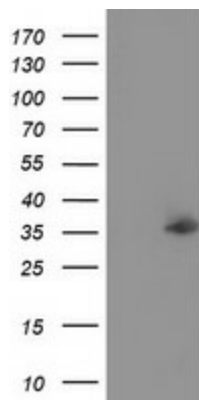
Product Type:	Primary Antibodies
Clone Name:	OTI7F4
Applications:	IF, IHC, WB
Recommended Dilution:	WB 1:2000, IHC 1:150, IF: 1:100
Reactivity:	Human
Host:	Mouse
Isotype:	IgG1
Clonality:	Monoclonal
Immunogen:	Full length human recombinant protein of human NUDT6(NP_009014) produced in HEK293T cell.
Formulation:	PBS (pH 7.3) containing 1% BSA, 50% glycerol and 0.02% sodium azide.
Concentration:	0.63 mg/ml
Purification:	Purified from mouse ascites fluids or tissue culture supernatant by affinity chromatography (protein A/G)
Conjugation:	Unconjugated
Storage:	Store at -20°C as received.
Stability:	Stable for 12 months from date of receipt.
Predicted Protein Size:	35.5 kDa
Gene Name:	nudix hydrolase 6
Database Link:	<a href="#">NP_009014</a> <a href="#">Entrez Gene 11162 Human P53370</a>
Background:	FGF2 (MIM 134920) is a highly conserved, multifunctional heparin-binding growth factor involved in neuroectoderm development, angiogenesis, and wound healing. Elevated levels of FGF2 are associated with proliferation of smooth muscle in atherosclerosis and with proliferation of tumors. The FGF2 antisense gene, NUDT6, may regulate FGF2 expression. [supplied by OMIM]



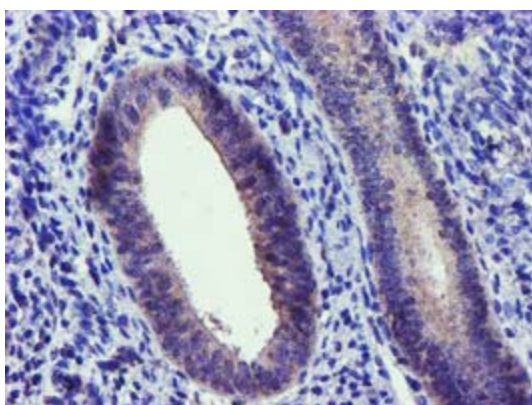
[View online »](#)

Synonyms: ASFGF2; FGF-AS; FGF2AS; GFG-1; GFG1

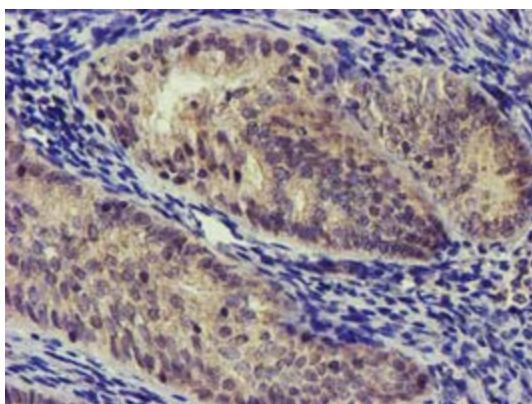
**Product images:**



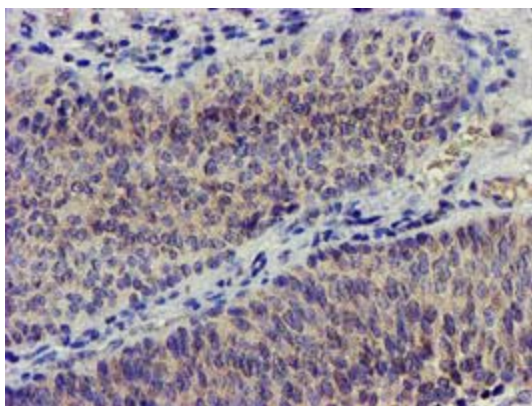
HEK293T cells were transfected with the pCMV6-ENTRY control (Left lane) or pCMV6-ENTRY NUDT6 ([RC203470], Right lane) cDNA for 48 hrs and lysed. Equivalent amounts of cell lysates (5 ug per lane) were separated by SDS-PAGE and immunoblotted with anti-NUDT6. Positive lysates [LY402086] (100ug) and [LC402086] (20ug) can be purchased separately from OriGene.



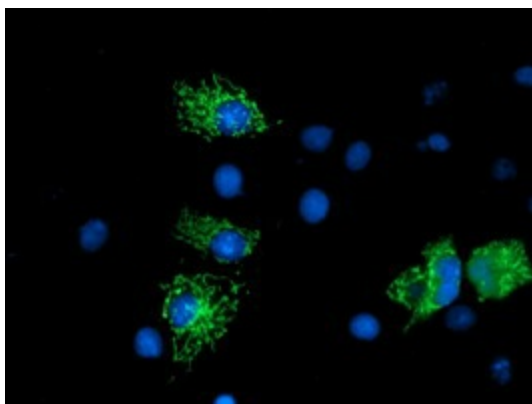
Immunohistochemical staining of paraffin-embedded Human endometrium tissue within the normal limits using anti-NUDT6 mouse monoclonal antibody. (Heat-induced epitope retrieval by 10mM citric buffer, pH6.0, 100°C for 10min, [TA502332])



Immunohistochemical staining of paraffin-embedded Adenocarcinoma of Human endometrium tissue using anti-NUDT6 mouse monoclonal antibody. (Heat-induced epitope retrieval by 10mM citric buffer, pH6.0, 100°C for 10min, [TA502332])



Immunohistochemical staining of paraffin-embedded Carcinoma of Human bladder tissue using anti-NUDT6 mouse monoclonal antibody. (Heat-induced epitope retrieval by 10mM citric buffer, pH6.0, 100°C for 10min, [TA502332])



Anti-NUDT6 mouse monoclonal antibody ([TA502332]) immunofluorescent staining of COS7 cells transiently transfected by pCMV6-ENTRY NUDT6 ([RC203470]).