

Product datasheet for **TA502328**

Desmin (DES) Mouse Monoclonal Antibody [Clone ID: OTI4G1]

Product data:

Product Type:	Primary Antibodies
Clone Name:	OTI4G1
Applications:	FC, IHC, WB
Recommended Dilution:	WB 1:200~500, IHC 1:150, FLOW 1:100
Reactivity:	Human, Mouse, Rat
Host:	Mouse
Isotype:	IgG1
Clonality:	Monoclonal
Immunogen:	Human fragment corresponding to amino acids 104-391 of human DES (NP_001918) produced in E.coli.
Formulation:	PBS (pH 7.3) containing 1% BSA, 50% glycerol and 0.02% sodium azide.
Concentration:	0.63 mg/ml
Purification:	Purified from mouse ascites fluids or tissue culture supernatant by affinity chromatography (protein A/G)
Conjugation:	Unconjugated
Storage:	Store at -20°C as received.
Stability:	Stable for 12 months from date of receipt.
Predicted Protein Size:	53.4 kDa
Gene Name:	desmin
Database Link:	NP_001918 Entrez Gene 13346 Mouse Entrez Gene 64362 Rat Entrez Gene 1674 Human P17661
Background:	This gene encodes a muscle-specific class III intermediate filament. Homopolymers of this protein form a stable intracytoplasmic filamentous network connecting myofibrils to each other and to the plasma membrane. Mutations in this gene are associated with desmin-related myopathy, a familial cardiac and skeletal myopathy (CSM), and with distal myopathies. [provided by RefSeq, Jul 2008]

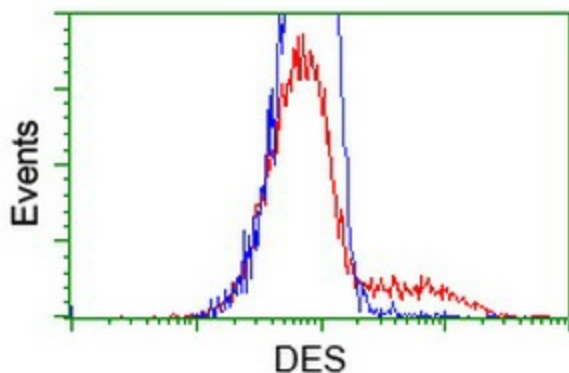

[View online »](#)

Synonyms: CDCD3; CSM1; CSM2; LGMD1D; LGMD1E; LGMD2R

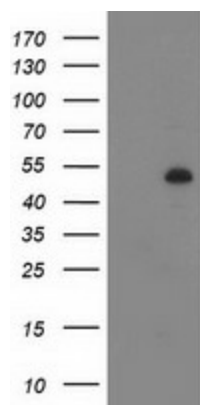
Protein Families: Druggable Genome

Protein Pathways: Arrhythmogenic right ventricular cardiomyopathy (ARVC), Dilated cardiomyopathy, Hypertrophic cardiomyopathy (HCM)

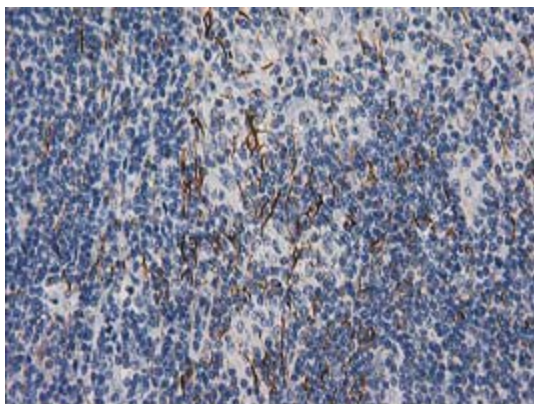
Product images:



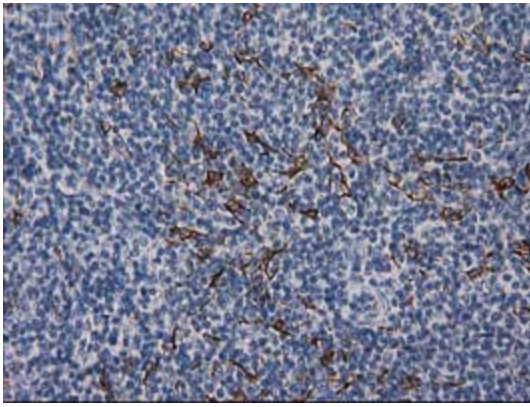
HEK293T cells transfected with either [RC205685] overexpress plasmid (Red) or empty vector control plasmid (Blue) were immunostained by anti-DES antibody (TA502328), and then analyzed by flow cytometry.



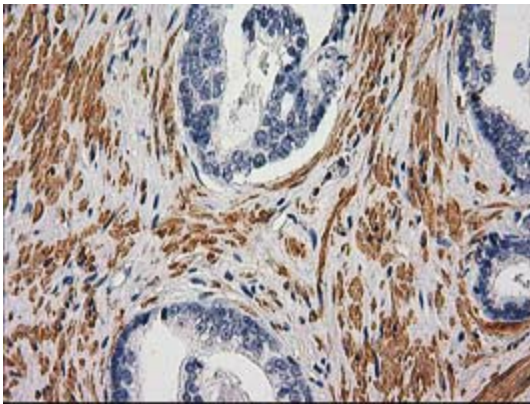
HEK293T cells were transfected with the pCMV6-ENTRY control (Cat# [PS100001], Left lane) or pCMV6-ENTRY DES (Cat# [RC205685], Right lane) cDNA for 48 hrs and lysed. Equivalent amounts of cell lysates (5 ug per lane) were separated by SDS-PAGE and immunoblotted with anti-DES (Cat# TA502328). Positive lysates [LY400713] (100ug) and [LC400713] (20ug) can be purchased separately from OriGene.



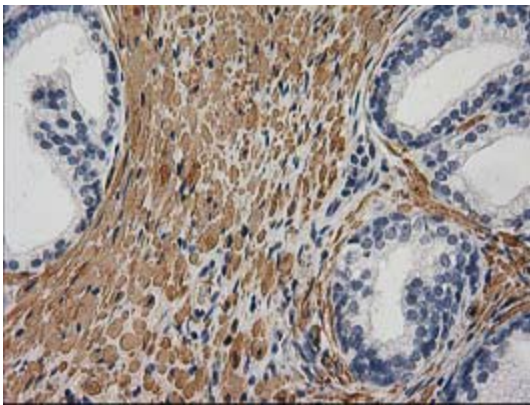
Immunohistochemical staining of paraffin-embedded Human lymphoma tissue using anti-DES mouse monoclonal antibody. (Heat-induced epitope retrieval by 10mM citric buffer, pH6.0, 100°C for 10min, TA502328)



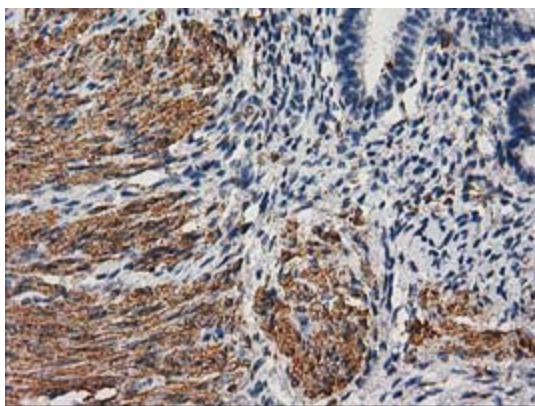
Immunohistochemical staining of paraffin-embedded Human lymph node tissue within the normal limits using anti-DES mouse monoclonal antibody. (Heat-induced epitope retrieval by 10mM citric buffer, pH6.0, 100°C for 10min, TA502328)



Immunohistochemical staining of paraffin-embedded Carcinoma of Human prostate tissue using anti-DES mouse monoclonal antibody. (Heat-induced epitope retrieval by 10mM citric buffer, pH6.0, 100°C for 10min, TA502328)



Immunohistochemical staining of paraffin-embedded Human prostate tissue within the normal limits using anti-DES mouse monoclonal antibody. (Heat-induced epitope retrieval by 10mM citric buffer, pH6.0, 100°C for 10min, TA502328)



Immunohistochemical staining of paraffin-embedded Human endometrium tissue within the normal limits using anti-DES mouse monoclonal antibody. (Heat-induced epitope retrieval by 10mM citric buffer, pH6.0, 100°C for 10min, TA502328)