

Product datasheet for **TA502327BM**

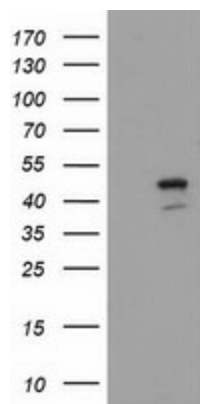
SERPINB4 Mouse Monoclonal Antibody (HRP conjugated) [Clone ID: OTI1G6]

Product data:

Product Type:	Primary Antibodies
Clone Name:	OTI1G6
Applications:	WB
Recommended Dilution:	WB 1:500
Reactivity:	Human
Host:	Mouse
Isotype:	IgG2a
Clonality:	Monoclonal
Immunogen:	Full length human recombinant protein of human SERPINB4 (NP_002965) produced in HEK293T cell.
Formulation:	PBS (pH 7.3) containing 1% BSA, 50% glycerol.
Concentration:	0.5 mg/ml
Purification:	Purified from mouse ascites fluids or tissue culture supernatant by affinity chromatography (protein A/G)
Conjugation:	HRP
Storage:	Store at -20°C as received.
Stability:	Stable for 12 months from date of receipt.
Predicted Protein Size:	44.7 kDa
Gene Name:	serpin family B member 4
Database Link:	NP_002965 Entrez Gene 6318 Human P48594
Synonyms:	LEUPIN; PI11; SCCA-2; SCCA1; SCCA2
Protein Families:	Druggable Genome, Secreted Protein



[View online »](#)

Product images:

HEK293T cells were transfected with the pCMV6-ENTRY control (Left lane) or pCMV6-ENTRY SERPINB4 ([RC205612], Right lane) cDNA for 48 hrs and lysed. Equivalent amounts of cell lysates (5 ug per lane) were separated by SDS-PAGE and immunoblotted with anti-SERPINB4. Positive lysates [LY418979] (100ug) and [LC418979] (20ug) can be purchased separately from OriGene.