

## Product datasheet for **TA502319AM**

### **PDE2A Mouse Monoclonal Antibody (Biotin conjugated) [Clone ID: OTI5B10]**

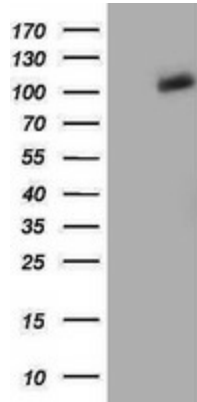
#### **Product data:**

<b>Product Type:</b>	Primary Antibodies
<b>Clone Name:</b>	OTI5B10
<b>Applications:</b>	FC, IF, WB
<b>Recommended Dilution:</b>	WB 1:2000, IF 1:100, FLOW 1:100
<b>Reactivity:</b>	Human, Mouse, Rat
<b>Host:</b>	Mouse
<b>Isotype:</b>	IgG2a
<b>Clonality:</b>	Monoclonal
<b>Immunogen:</b>	Full length human recombinant protein of human PDE2A (NP_002590) produced in HEK293T cell.
<b>Formulation:</b>	PBS (pH 7.3) containing 1% BSA, 50% glycerol and 0.02% sodium azide.
<b>Concentration:</b>	0.5 mg/ml
<b>Purification:</b>	Purified from mouse ascites fluids or tissue culture supernatant by affinity chromatography (protein A/G)
<b>Conjugation:</b>	Biotin
<b>Storage:</b>	Store at -20°C as received.
<b>Stability:</b>	Stable for 12 months from date of receipt.
<b>Predicted Protein Size:</b>	105.5 kDa
<b>Gene Name:</b>	phosphodiesterase 2A
<b>Database Link:</b>	<a href="#">NP_002590</a> <a href="#">Entrez Gene 81743 Rat</a> <a href="#">Entrez Gene 207728 Mouse</a> <a href="#">Entrez Gene 5138 Human</a> <a href="#">O00408</a>
<b>Synonyms:</b>	CGS-PDE; cGSPDE; PDE2A1; PED2A4
<b>Protein Families:</b>	Druggable Genome
<b>Protein Pathways:</b>	Progesterone-mediated oocyte maturation, Purine metabolism

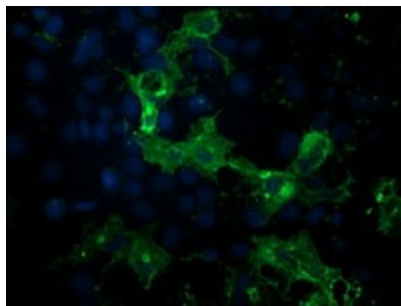


[View online »](#)

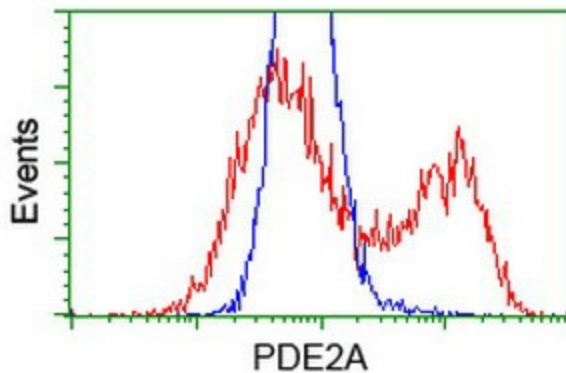
Product images:



HEK293T cells were transfected with the pCMV6-ENTRY control (Left lane) or pCMV6-ENTRY PDE2A ([RC207219], Right lane) cDNA for 48 hrs and lysed. Equivalent amounts of cell lysates (5 ug per lane) were separated by SDS-PAGE and immunoblotted with anti-PDE2A. Positive lysates [LY419215] (100ug) and [LC419215] (20ug) can be purchased separately from OriGene.



Anti-PDE2A mouse monoclonal antibody ([TA502319]) immunofluorescent staining of COS7 cells transiently transfected by pCMV6-ENTRY PDE2A ([RC207219]).



HEK293T cells transfected with either [RC207219] overexpress plasmid (Red) or empty vector control plasmid (Blue) were immunostained by anti-PDE2A antibody ([TA502319]), and then analyzed by flow cytometry.