

Product datasheet for **TA502315AM**

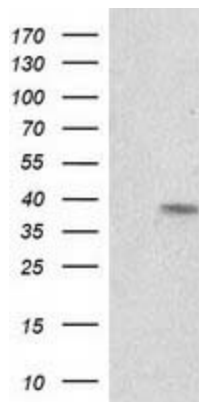
RDH14 Mouse Monoclonal Antibody (Biotin conjugated) [Clone ID: OTI6C3]

Product data:

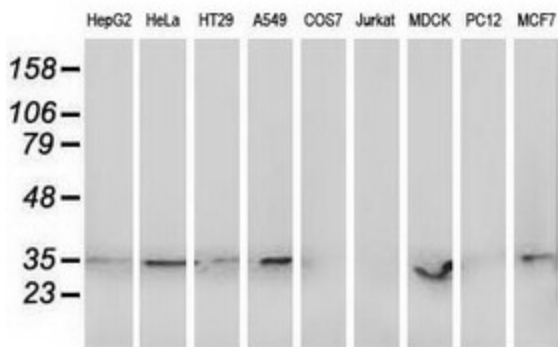
Product Type:	Primary Antibodies
Clone Name:	OTI6C3
Applications:	WB
Recommended Dilution:	WB 1:200~500
Reactivity:	Human, Dog, Mouse, Rat
Host:	Mouse
Isotype:	IgG1
Clonality:	Monoclonal
Immunogen:	Full length human recombinant protein of human RDH14 (NP_065956) produced in HEK293T cell.
Formulation:	PBS (pH 7.3) containing 1% BSA, 50% glycerol and 0.02% sodium azide.
Concentration:	0.5 mg/ml
Purification:	Purified from mouse ascites fluids or tissue culture supernatant by affinity chromatography (protein A/G)
Conjugation:	Biotin
Storage:	Store at -20°C as received.
Stability:	Stable for 12 months from date of receipt.
Predicted Protein Size:	36.7 kDa
Gene Name:	retinol dehydrogenase 14
Database Link:	NP_065956 Entrez Gene 500629 Rat Entrez Gene 100856223 Dog Entrez Gene 57665 Human Q9HBH5
Synonyms:	PAN2; SDR7C4
Protein Families:	Druggable Genome, Transmembrane



[View online »](#)

Product images:


HEK293T cells were transfected with the pCMV6-ENTRY control (Left lane) or pCMV6-ENTRY RDH14 ([RC203411], Right lane) cDNA for 48 hrs and lysed. Equivalent amounts of cell lysates (5 ug per lane) were separated by SDS-PAGE and immunoblotted with anti-RDH14. Positive lysates [LY412210] (100ug) and [LC412210] (20ug) can be purchased separately from OriGene.



Western blot analysis of extracts (35ug) from 9 different cell lines by using anti-RDH14 monoclonal antibody.