

## Product datasheet for **TA502314S**

### **FAM40A (STRIP1) Mouse Monoclonal Antibody [Clone ID: OTI7G7]**

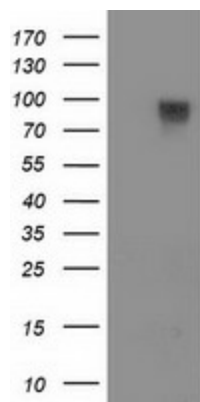
#### **Product data:**

Product Type:	Primary Antibodies
Clone Name:	OTI7G7
Applications:	FC, IF, IHC, WB
Recommended Dilution:	WB 1:1000~2000, IHC 1:150, IF 1:100, FLOW 1:100
Reactivity:	Human, Dog, Rat, Mouse
Host:	Mouse
Isotype:	IgG2a
Clonality:	Monoclonal
Immunogen:	Full length human recombinant protein of human FAM40A (NP_149079) produced in HEK293T cell.
Formulation:	PBS (pH 7.3) containing 1% BSA, 50% glycerol and 0.02% sodium azide.
Concentration:	0.66 mg/ml
Purification:	Purified from mouse ascites fluids or tissue culture supernatant by affinity chromatography (protein A/G)
Conjugation:	Unconjugated
Storage:	Store at -20°C as received.
Stability:	Stable for 12 months from date of receipt.
Predicted Protein Size:	95.4 kDa
Gene Name:	striatin interacting protein 1
Database Link:	<a href="#">NP_149079</a> <a href="#">Entrez Gene 362012 Rat</a> <a href="#">Entrez Gene 490117 Dog</a> <a href="#">Entrez Gene 85369 Human</a> <a href="#">Q5VSL9</a>
Synonyms:	FAM40A; FAR11A

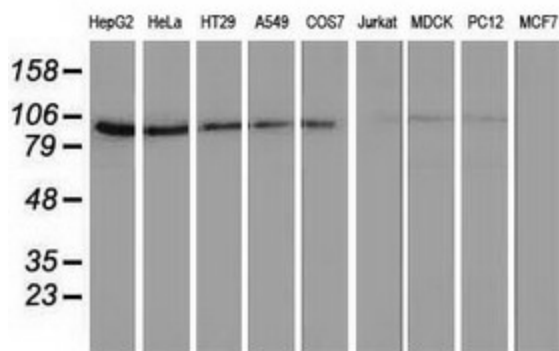


[View online »](#)

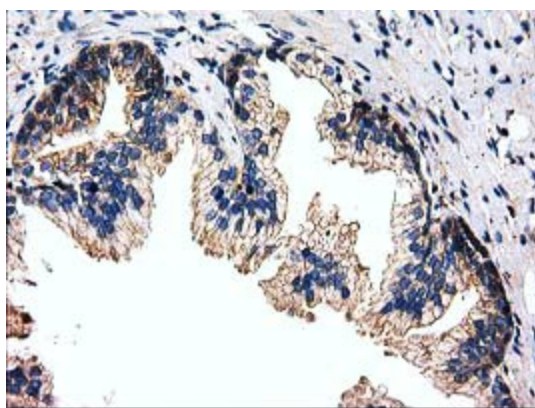
## Product images:



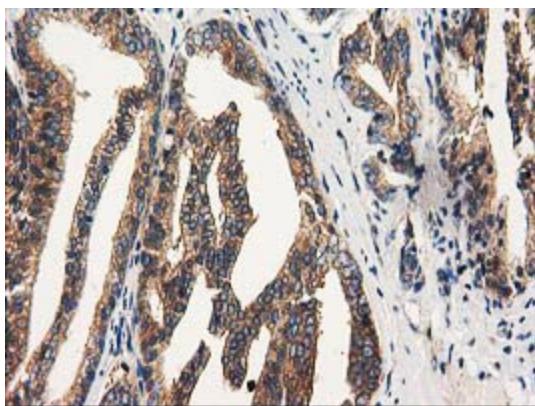
HEK293T cells were transfected with the pCMV6-ENTRY control (Left lane) or pCMV6-ENTRY FAM40A ([RC210537], Right lane) cDNA for 48 hrs and lysed. Equivalent amounts of cell lysates (5 ug per lane) were separated by SDS-PAGE and immunoblotted with anti-FAM40A. Positive lysates [LY409738] (100ug) and [LC409738] (20ug) can be purchased separately from OriGene.



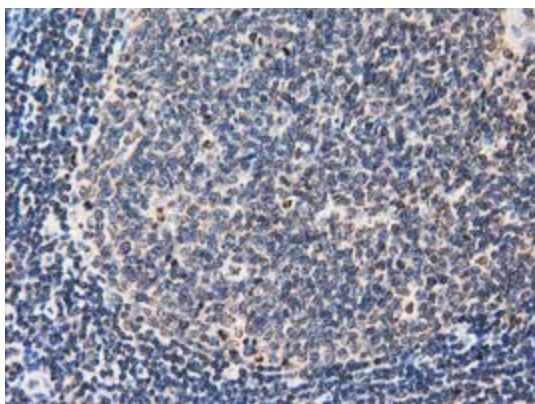
Western blot analysis of extracts (35ug) from 9 different cell lines by using anti-FAM40A monoclonal antibody.



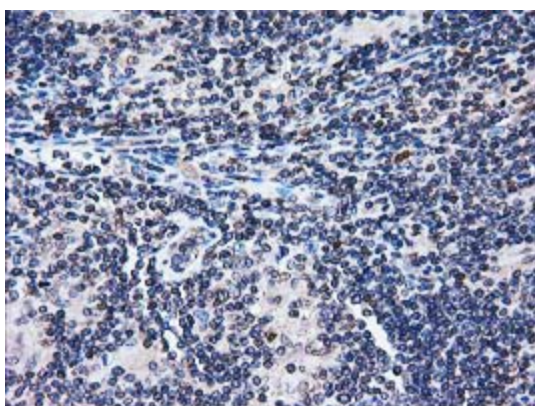
Immunohistochemical staining of paraffin-embedded Human prostate tissue within the normal limits using anti-FAM40A mouse monoclonal antibody. (Heat-induced epitope retrieval by 10mM citric buffer, pH6.0, 100°C for 10min, [TA502314])



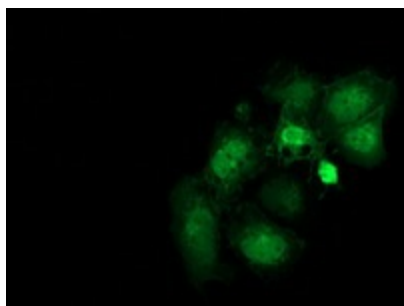
Immunohistochemical staining of paraffin-embedded Carcinoma of Human prostate tissue using anti-FAM40A mouse monoclonal antibody. (Heat-induced epitope retrieval by 10mM citric buffer, pH6.0, 100°C for 10min, [TA502314])



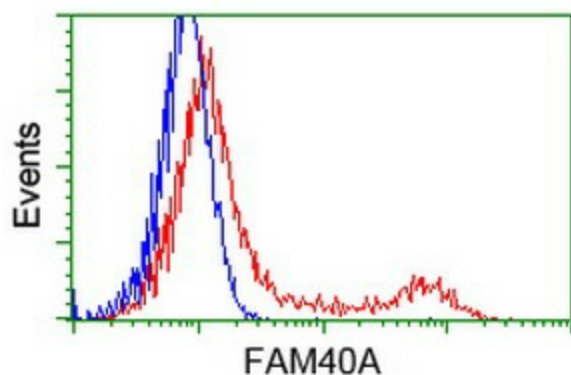
Immunohistochemical staining of paraffin-embedded Human lymph node tissue within the normal limits using anti-FAM40A mouse monoclonal antibody. (Heat-induced epitope retrieval by 10mM citric buffer, pH6.0, 100°C for 10min, [TA502314])



Immunohistochemical staining of paraffin-embedded Human lymphoma tissue using anti-FAM40A mouse monoclonal antibody. (Heat-induced epitope retrieval by 10mM citric buffer, pH6.0, 100°C for 10min, [TA502314])



Anti-FAM40A mouse monoclonal antibody ([TA502314]) immunofluorescent staining of COS7 cells transiently transfected by pCMV6-ENTRY FAM40A ([RC210537]).



HEK293T cells transfected with either [RC210537] overexpress plasmid (Red) or empty vector control plasmid (Blue) were immunostained by anti-FAM40A antibody ([TA502314]), and then analyzed by flow cytometry.