

## Product datasheet for **TA502313BM**

### Gephyrin (GPHN) Mouse Monoclonal Antibody (HRP conjugated) [Clone ID: OTI5C9]

#### Product data:

Product Type:	Primary Antibodies
Clone Name:	OTI5C9
Applications:	FC, WB
Recommended Dilution:	WB 1:2000, FLOW 1:100
Reactivity:	Human, Mouse, Rat
Host:	Mouse
Isotype:	IgG2a
Clonality:	Monoclonal
Immunogen:	Full length human recombinant protein of human GPHN (NP_065857) produced in HEK293T cell.
Formulation:	PBS (pH 7.3) containing 1% BSA, 50% glycerol.
Concentration:	0.5 mg/ml
Purification:	Purified from mouse ascites fluids or tissue culture supernatant by affinity chromatography (protein A/G)
Conjugation:	HRP
Storage:	Store at -20°C as received.
Stability:	Stable for 12 months from date of receipt.
Predicted Protein Size:	83.3 kDa
Gene Name:	gephyrin
Database Link:	<a href="#">NP_065857</a> <a href="#">Entrez Gene 64845 Rat</a> <a href="#">Entrez Gene 268566 Mouse</a> <a href="#">Entrez Gene 10243 Human</a> <a href="#">Q9NQX3</a>



[View online »](#)

**Background:**

This gene encodes a neuronal assembly protein that anchors inhibitory neurotransmitter receptors to the postsynaptic cytoskeleton via high affinity binding to a receptor subunit domain and tubulin dimers. In nonneuronal tissues, the encoded protein is also required for molybdenum cofactor biosynthesis. Mutations in this gene may be associated with the neurological condition hyperplexia and also lead to molybdenum cofactor deficiency. Numerous alternatively spliced transcript variants encoding different isoforms have been described; however, the full-length nature of all transcript variants is not currently known. [provided by RefSeq]

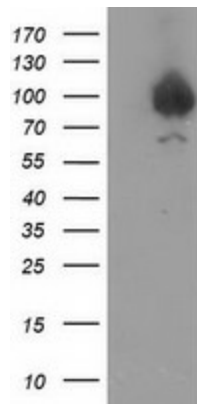
**Synonyms:**

GEPH; GPH; GPHRYN; HKPX1; MOCODC

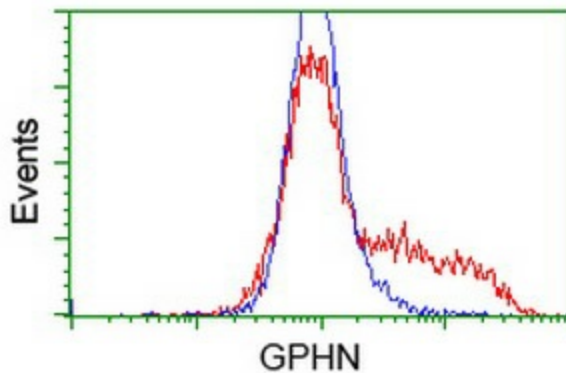
**Protein Families:**

Druggable Genome

**Product images:**



HEK293T cells were transfected with the pCMV6-ENTRY control (Left lane) or pCMV6-ENTRY GPHN ([RC205986], Right lane) cDNA for 48 hrs and lysed. Equivalent amounts of cell lysates (5 ug per lane) were separated by SDS-PAGE and immunoblotted with anti-GPHN. Positive lysates [LY402806] (100ug) and [LC402806] (20ug) can be purchased separately from OriGene.



HEK293T cells transfected with either [RC205986] overexpress plasmid (Red) or empty vector control plasmid (Blue) were immunostained by anti-GPHN antibody ([TA502313]), and then analyzed by flow cytometry.