

## Product datasheet for **TA502311S**

### MSI1 Mouse Monoclonal Antibody [Clone ID: OTI2G9]

#### Product data:

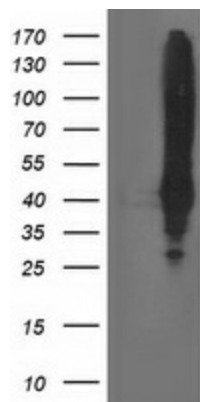
Product Type:	Primary Antibodies
Clone Name:	OTI2G9
Applications:	FC, IF, WB
Recommended Dilution:	WB 1:2000, IF 1:100, FLOW 1:100
Reactivity:	Human, Mouse, Rat
Host:	Mouse
Isotype:	IgG2a
Clonality:	Monoclonal
Immunogen:	Full length human recombinant protein of human MSI1(NP_002433) produced in HEK293T cell.
Formulation:	PBS (pH 7.3) containing 1% BSA, 50% glycerol and 0.02% sodium azide.
Concentration:	0.66 mg/ml
Purification:	Purified from mouse ascites fluids or tissue culture supernatant by affinity chromatography (protein A/G)
Conjugation:	Unconjugated
Storage:	Store at -20°C as received.
Stability:	Stable for 12 months from date of receipt.
Predicted Protein Size:	38.9 kDa
Gene Name:	musashi RNA binding protein 1
Database Link:	<a href="#">NP_002433</a> <a href="#">Entrez Gene 17690 Mouse</a> <a href="#">Entrez Gene 259272 Rat</a> <a href="#">Entrez Gene 4440 Human</a> <a href="#">O43347</a>
Background:	This gene encodes a protein containing two conserved tandem RNA recognition motifs. Similar proteins in other species function as RNA-binding proteins and play central roles in posttranscriptional gene regulation. Expression of this gene has been correlated with the grade of the malignancy and proliferative activity in gliomas and melanomas. A pseudogene for this gene is located on chromosome 11q13. [provided by RefSeq]



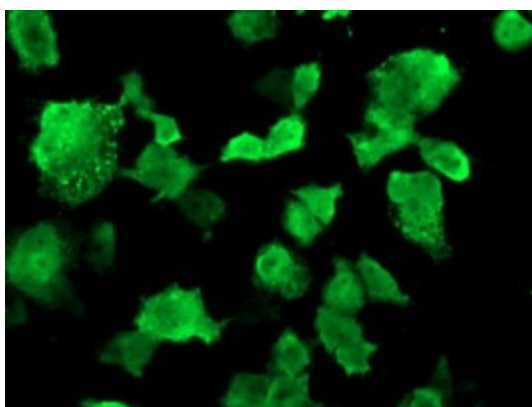
[View online »](#)

Synonyms: musashi 1; musashi homolog 1 (Drosophila)

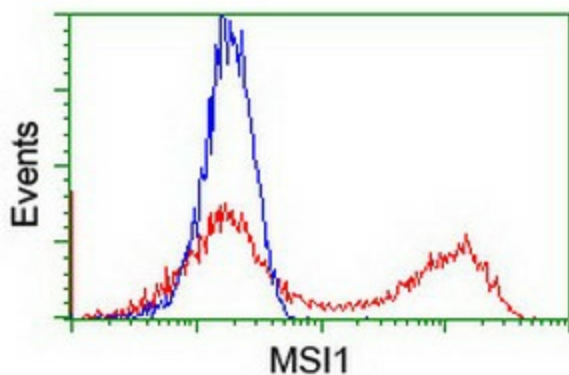
### Product images:



HEK293T cells were transfected with the pCMV6-ENTRY control (Left lane) or pCMV6-ENTRY MSI1 ([RC215992], Right lane) cDNA for 48 hrs and lysed. Equivalent amounts of cell lysates (5 ug per lane) were separated by SDS-PAGE and immunoblotted with anti-MSI1. Positive lysates [LY419331] (100ug) and [LC419331] (20ug) can be purchased separately from OriGene.



Anti-MSI1 mouse monoclonal antibody ([TA502311]) immunofluorescent staining of COS7 cells transiently transfected by pCMV6-ENTRY MSI1 ([RC215992]).



HEK293T cells transfected with either [RC215992] overexpress plasmid (Red) or empty vector control plasmid (Blue) were immunostained by anti-MSI1 antibody ([TA502311]), and then analyzed by flow cytometry.