

Product datasheet for **TA502310BM**

FAM40A (STRIP1) Mouse Monoclonal Antibody (HRP conjugated) [Clone ID: OTI7B8]

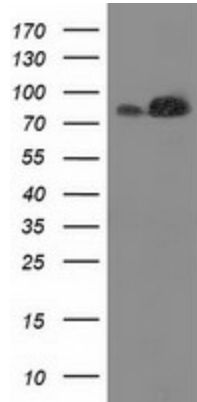
Product data:

Product Type:	Primary Antibodies
Clone Name:	OTI7B8
Applications:	FC, IF, IHC, WB
Recommended Dilution:	WB 1:1000~2000, IHC 1:150, IF 1:100, FLOW 1:100
Reactivity:	Human, Dog, Rat, Monkey, Mouse
Host:	Mouse
Isotype:	IgG2a
Clonality:	Monoclonal
Immunogen:	Full length human recombinant protein of human FAM40A (NP_149079) produced in HEK293T cell.
Formulation:	PBS (pH 7.3) containing 1% BSA, 50% glycerol.
Concentration:	0.5 mg/ml
Purification:	Purified from mouse ascites fluids or tissue culture supernatant by affinity chromatography (protein A/G)
Conjugation:	HRP
Storage:	Store at -20°C as received.
Stability:	Stable for 12 months from date of receipt.
Predicted Protein Size:	95.4 kDa
Gene Name:	striatin interacting protein 1
Database Link:	NP_149079 Entrez Gene 362012 Rat Entrez Gene 490117 Dog Entrez Gene 700799 Monkey Entrez Gene 85369 Human Q5VSL9
Synonyms:	FAM40A; FAR11A

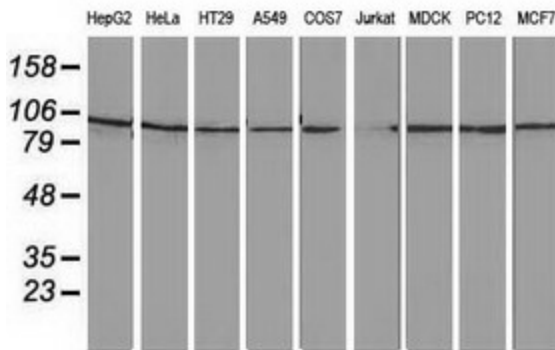


[View online »](#)

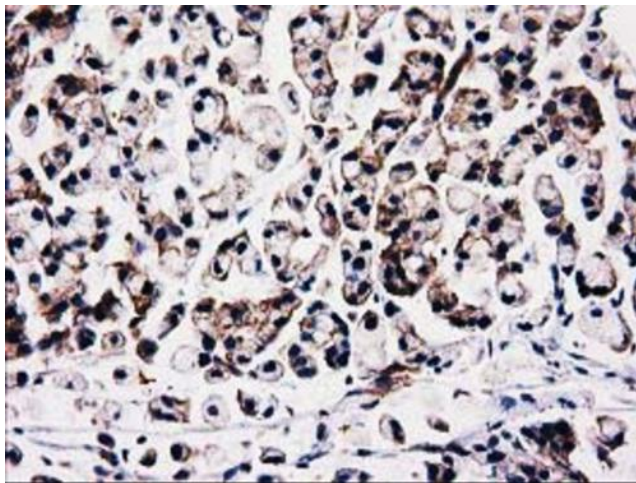
Product images:



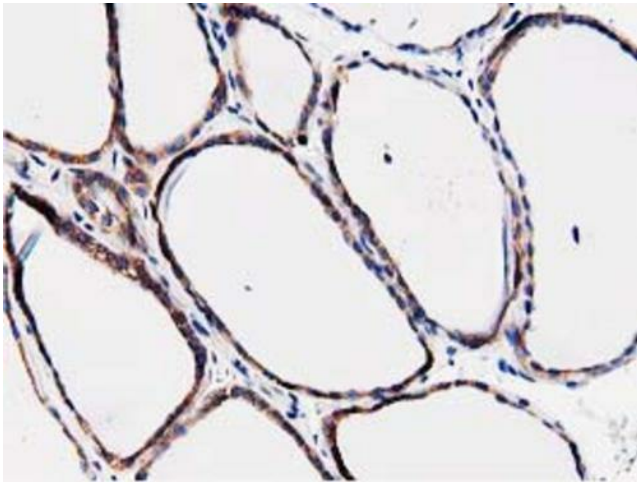
HEK293T cells were transfected with the pCMV6-ENTRY control (Cat# [PS100001], Left lane) or pCMV6-ENTRY FAM40A (Cat# [RC210537], Right lane) cDNA for 48 hrs and lysed. Equivalent amounts of cell lysates (5 ug per lane) were separated by SDS-PAGE and immunoblotted with anti-FAM40A (Cat# [TA502310]). Positive lysates [LY409738] (100ug) and [LC409738] (20ug) can be purchased separately from OriGene.



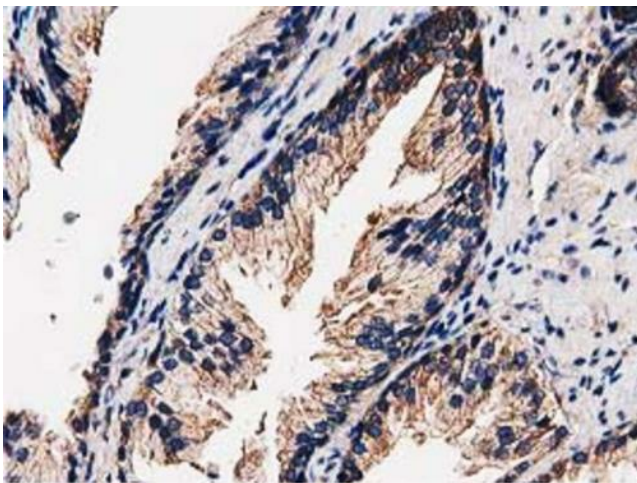
Western blot analysis of extracts (35ug) from 9 different cell lines by using anti-FAM40A monoclonal antibody.



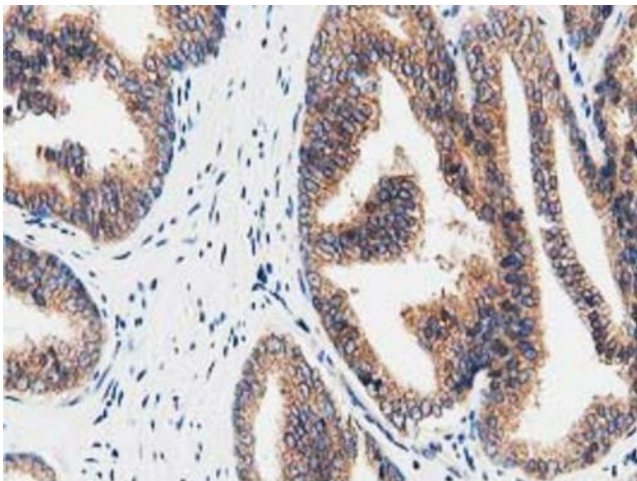
Immunohistochemical staining of paraffin-embedded Adenocarcinoma of Human colon tissue using anti-FAM40A mouse monoclonal antibody. (Heat-induced epitope retrieval by 10mM citric buffer, pH6.0, 100°C for 10min, [TA502310])



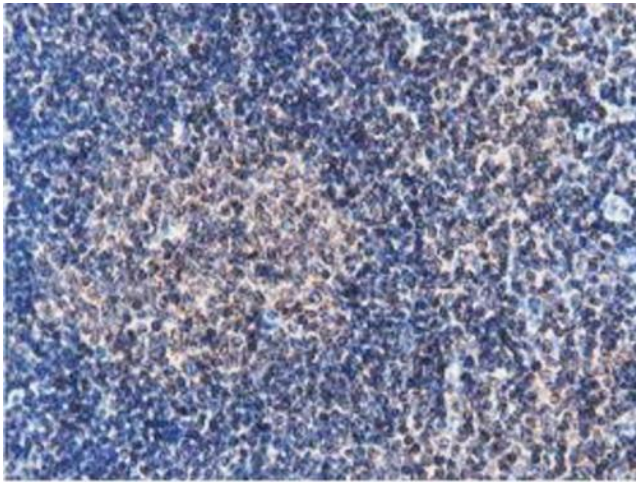
Immunohistochemical staining of paraffin-embedded Human thyroid tissue within the normal limits using anti-FAM40A mouse monoclonal antibody. (Heat-induced epitope retrieval by 10mM citric buffer, pH6.0, 100°C for 10min, [TA502310])



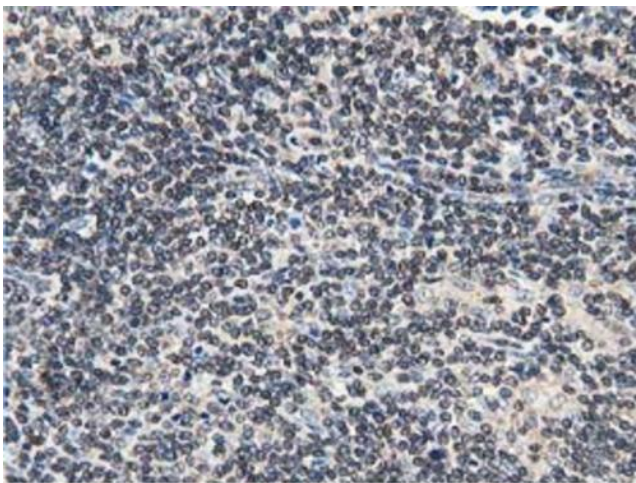
Immunohistochemical staining of paraffin-embedded Human prostate tissue within the normal limits using anti-FAM40A mouse monoclonal antibody. (Heat-induced epitope retrieval by 10mM citric buffer, pH6.0, 100°C for 10min, [TA502310])



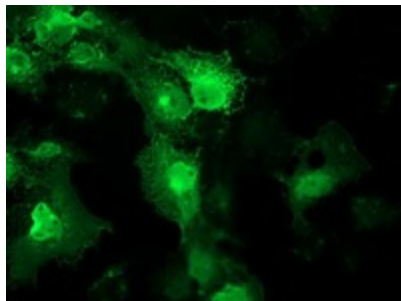
Immunohistochemical staining of paraffin-embedded Carcinoma of Human prostate tissue using anti-FAM40A mouse monoclonal antibody. (Heat-induced epitope retrieval by 10mM citric buffer, pH6.0, 100°C for 10min, [TA502310])



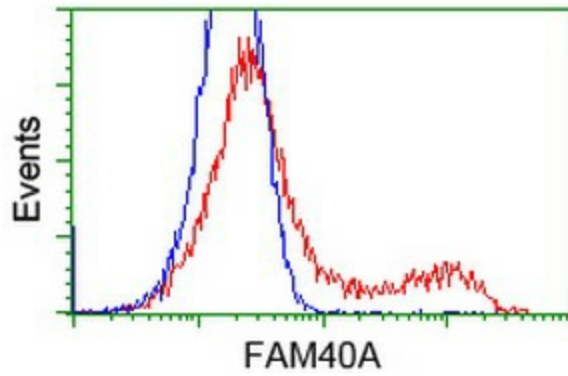
Immunohistochemical staining of paraffin-embedded Human lymph node tissue within the normal limits using anti-FAM40A mouse monoclonal antibody. (Heat-induced epitope retrieval by 10mM citric buffer, pH6.0, 100°C for 10min, [TA502310])



Immunohistochemical staining of paraffin-embedded Human lymphoma tissue using anti-FAM40A mouse monoclonal antibody. (Heat-induced epitope retrieval by 10mM citric buffer, pH6.0, 100°C for 10min, [TA502310])



Anti-FAM40A mouse monoclonal antibody ([TA502310]) immunofluorescent staining of COS7 cells transiently transfected by pCMV6-ENTRY FAM40A ([RC210537]).



HEK293T cells transfected with either [RC210537] overexpress plasmid (Red) or empty vector control plasmid (Blue) were immunostained by anti-FAM40A antibody ([TA502310]), and then analyzed by flow cytometry.