

Product datasheet for TA502307M

Butyrylcholinesterase (BCHE) Mouse Monoclonal Antibody [Clone ID: OT1E1]

Product data:

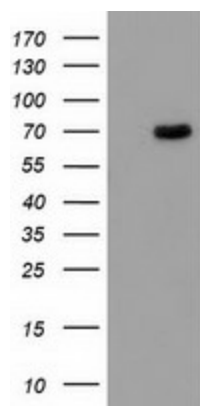
Product Type:	Primary Antibodies
Clone Name:	OT1E1
Applications:	FC, WB
Recommended Dilution:	WB 1:500~2000, FLOW 1:100
Reactivity:	Human, Dog
Host:	Mouse
Isotype:	IgG1
Clonality:	Monoclonal
Immunogen:	Full length human recombinant protein of human BCHE (NP_000046) produced in HEK293T cell.
Formulation:	PBS (pH 7.3) containing 1% BSA, 50% glycerol and 0.02% sodium azide.
Concentration:	0.72 mg/ml
Purification:	Purified from mouse ascites fluids or tissue culture supernatant by affinity chromatography (protein A/G)
Conjugation:	Unconjugated
Storage:	Store at -20°C as received.
Stability:	Stable for 12 months from date of receipt.
Predicted Protein Size:	68.2 kDa
Gene Name:	butyrylcholinesterase
Database Link:	NP_000046 Entrez Gene 488143 Dog Entrez Gene 590 Human P06276
Background:	Mutant alleles at the BCHE locus are responsible for suxamethonium sensitivity. Homozygous persons sustain prolonged apnea after administration of the muscle relaxant suxamethonium in connection with surgical anesthesia. The activity of pseudocholinesterase in the serum is low and its substrate behavior is atypical. In the absence of the relaxant, the homozygote is at no known disadvantage. [provided by RefSeq, Jul 2008]


[View online »](#)

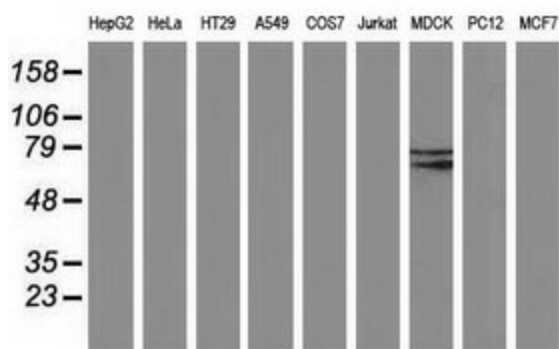
Synonyms: CHE1; CHE2; E1

Protein Families: Druggable Genome, Transmembrane

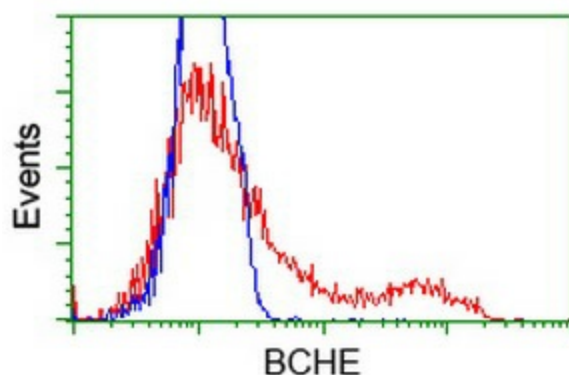
Product images:



HEK293T cells were transfected with the pCMV6-ENTRY control (Cat# [PS100001], Left lane) or pCMV6-ENTRY BCHE (Cat# [RC202198], Right lane) cDNA for 48 hrs and lysed. Equivalent amounts of cell lysates (5 ug per lane) were separated by SDS-PAGE and immunoblotted with anti-BCHE (Cat# [TA502307]). Positive lysates [LY424950] (100ug) and [LC424950] (20ug) can be purchased separately from OriGene.



Western blot analysis of extracts (35ug) from 9 different cell lines by using anti-BCHE monoclonal antibody (HepG2: human; HeLa: human; SVT2: mouse; A549: human; COS7: monkey; Jurkat: human; MDCK: canine; PC12: rat; MCF7: human).



HEK293T cells transfected with either [RC202198] overexpress plasmid (Red) or empty vector control plasmid (Blue) were immunostained by anti-BCHE antibody ([TA502307]), and then analyzed by flow cytometry.