

## Product datasheet for **TA502289**

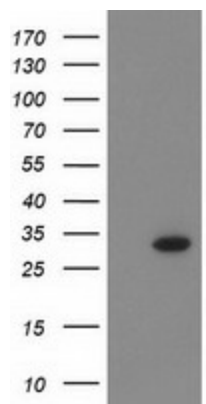
### CTDSP1 Mouse Monoclonal Antibody [Clone ID: OTI1F4]

#### Product data:

|                         |  |
|-------------------------|--|
| Product Type:           | Primary Antibodies   |
| Clone Name:             | OTI1F4   |
| Applications:           | WB   |
| Recommended Dilution:   | WB 1:500   |
| Reactivity:             | Human, Mouse, Rat  |
| Host:                   | Mouse  |
| Isotype:                | IgG2b  |
| Clonality:              | Monoclonal   |
| Immunogen:              | Full length human recombinant protein of human CTDSP1 (NP_067021) produced in E.coli.  |
| Formulation:            | PBS (pH 7.3) containing 1% BSA, 50% glycerol and 0.02% sodium azide.   |
| Concentration:          | 0.81 mg/ml   |
| Purification:           | Purified from mouse ascites fluids or tissue culture supernatant by affinity chromatography (protein A/G)  |
| Conjugation:            | Unconjugated   |
| Storage:                | Store at -20°C as received.  |
| Stability:              | Stable for 12 months from date of receipt.   |
| Predicted Protein Size: | 29 kDa   |
| Gene Name:              | CTD small phosphatase 1  |
| Database Link:          | <a href="#">NP_067021</a><br><a href="#">Entrez Gene 227292 Mouse</a> <a href="#">Entrez Gene 363249 Rat</a> <a href="#">Entrez Gene 58190 Human</a><br><a href="#">Q9GZU7</a> |
| Synonyms:               | NIF3; NLI-IF; NLIIF; SCP1  |
| Protein Families:       | Phosphatase  |



[View online »](#)

**Product images:**

HEK293T cells were transfected with the pCMV6-ENTRY control (Left lane) or pCMV6-ENTRY CTDSP1 ([RC212037], Right lane) cDNA for 48 hrs and lysed. Equivalent amounts of cell lysates (5 ug per lane) were separated by SDS-PAGE and immunoblotted with anti-CTDSP1. Positive lysates [LY412037] (100ug) and [LC412037] (20ug) can be purchased separately from OriGene.