

## Product datasheet for **TA502270BM**

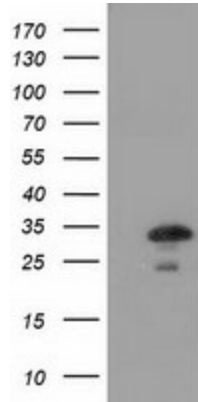
### CTDSP1 Mouse Monoclonal Antibody (HRP conjugated) [Clone ID: OTI1G1]

#### Product data:

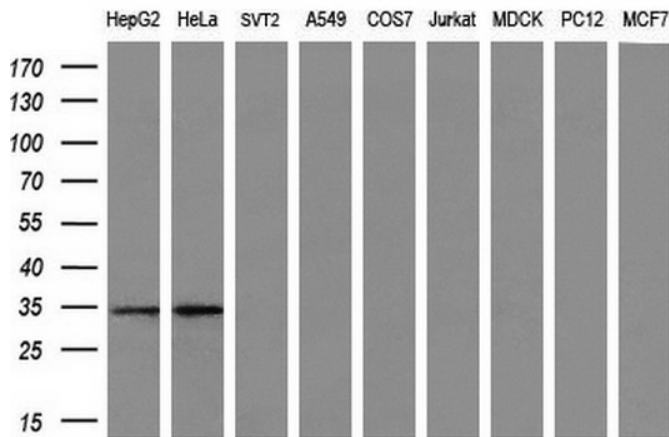
Product Type:	Primary Antibodies
Clone Name:	OTI1G1
Applications:	IHC, WB
Recommended Dilution:	WB 1:2000, IHC 1:150
Reactivity:	Human, Mouse, Rat
Host:	Mouse
Isotype:	IgG1
Clonality:	Monoclonal
Immunogen:	Full length human recombinant protein of human CTDSP1 (NP_067021) produced in E.coli.
Formulation:	PBS (pH 7.3) containing 1% BSA, 50% glycerol.
Concentration:	0.5 mg/ml
Purification:	Purified from mouse ascites fluids or tissue culture supernatant by affinity chromatography (protein A/G)
Conjugation:	HRP
Storage:	Store at -20°C as received.
Stability:	Stable for 12 months from date of receipt.
Predicted Protein Size:	29.0 kDa
Gene Name:	CTD small phosphatase 1
Database Link:	<a href="#">NP_067021</a> <a href="#">Entrez Gene 227292 Mouse</a> <a href="#">Entrez Gene 363249 Rat</a> <a href="#">Entrez Gene 58190 Human</a> <a href="#">Q9GZU7</a>
Synonyms:	NIF3; NLI-IF; NLIIF; SCP1
Protein Families:	Phosphatase



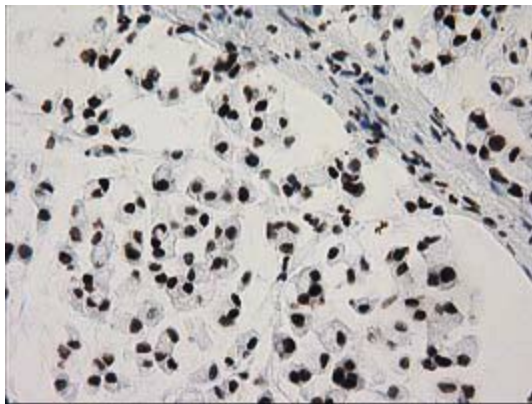
[View online »](#)

**Product images:**


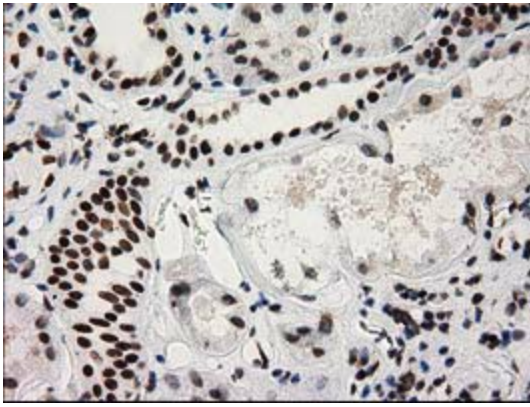
HEK293T cells were transfected with the pCMV6-ENTRY control (Left lane) or pCMV6-ENTRY CTDSP1 ([RC212037], Right lane) cDNA for 48 hrs and lysed. Equivalent amounts of cell lysates (5 ug per lane) were separated by SDS-PAGE and immunoblotted with anti-CTDSP1. Positive lysates [LY412037] (100ug) and [LC412037] (20ug) can be purchased separately from OriGene.



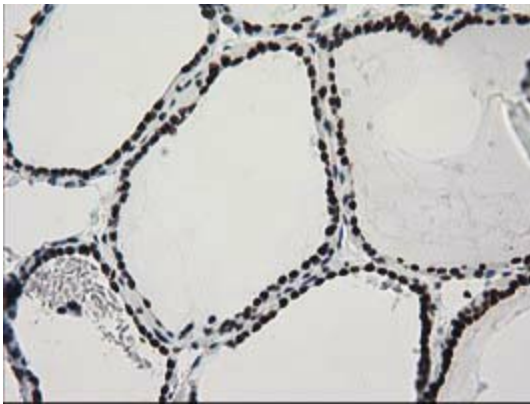
Western blot analysis of extracts (35ug) from 9 different cell lines by using anti-CTDSP1 monoclonal antibody (HepG2: human; HeLa: human; SVT2: mouse; A549: human; COS7: monkey; Jurkat: human; MDCK: canine; PC12: rat; MCF7: human) (1:200).



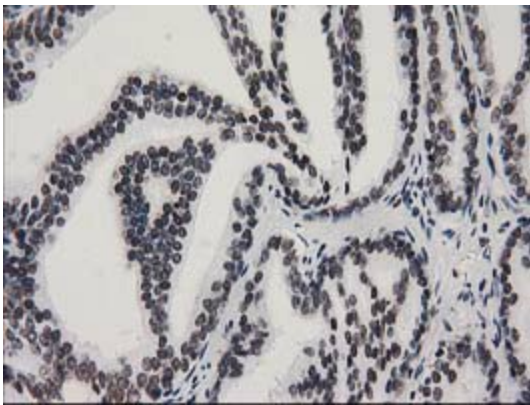
Immunohistochemical staining of paraffin-embedded Adenocarcinoma of Human colon tissue using anti-CTDSP1 mouse monoclonal antibody. (Heat-induced epitope retrieval by 10mM citric buffer, pH6.0, 100°C for 10min, [TA502270])



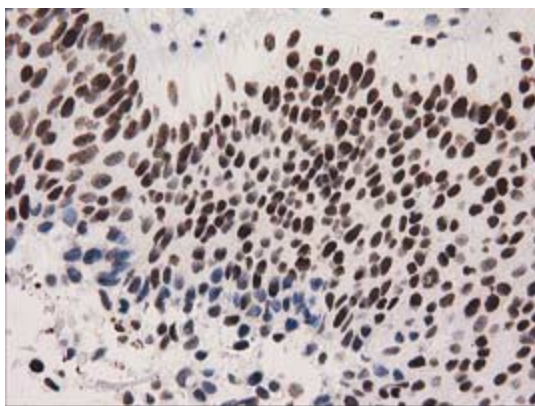
Immunohistochemical staining of paraffin-embedded Human Kidney tissue within the normal limits using anti-CTDSP1 mouse monoclonal antibody. (Heat-induced epitope retrieval by 10mM citric buffer, pH6.0, 100°C for 10min, [TA502270])



Immunohistochemical staining of paraffin-embedded Human thyroid tissue within the normal limits using anti-CTDSP1 mouse monoclonal antibody. (Heat-induced epitope retrieval by 10mM citric buffer, pH6.0, 100°C for 10min, [TA502270])



Immunohistochemical staining of paraffin-embedded Carcinoma of Human prostate tissue using anti-CTDSP1 mouse monoclonal antibody. (Heat-induced epitope retrieval by 10mM citric buffer, pH6.0, 100°C for 10min, [TA502270])



Immunohistochemical staining of paraffin-embedded Carcinoma of Human bladder tissue using anti-CTDSP1 mouse monoclonal antibody. (Heat-induced epitope retrieval by 10mM citric buffer, pH6.0, 100°C for 10min, [TA502270])