

## Product datasheet for **TA502257AM**

### **TASP1 Mouse Monoclonal Antibody (Biotin conjugated) [Clone ID: OTI1H6]**

#### **Product data:**

Product Type:	Primary Antibodies
Clone Name:	OTI1H6
Applications:	WB
Recommended Dilution:	WB 1:2000
Reactivity:	Human, Mouse, Rat
Host:	Mouse
Isotype:	IgG1
Clonality:	Monoclonal
Immunogen:	Full length human recombinant protein of human TASP1 (NP_060184) produced in HEK293T cell.
Formulation:	PBS (pH 7.3) containing 1% BSA, 50% glycerol and 0.02% sodium azide.
Concentration:	0.5 mg/ml
Purification:	Purified from mouse ascites fluids or tissue culture supernatant by affinity chromatography (protein A/G)
Conjugation:	Biotin
Storage:	Store at -20°C as received.
Stability:	Stable for 12 months from date of receipt.
Predicted Protein Size:	44.3 kDa
Gene Name:	taspase 1
Database Link:	<a href="#">NP_060184</a> <a href="#">Entrez Gene 75812 Mouse</a> <a href="#">Entrez Gene 311468 Rat</a> <a href="#">Entrez Gene 55617 Human</a> <a href="#">Q9H6P5</a>



[View online »](#)

**Background:**

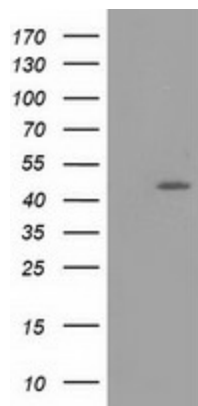
This gene encodes an endopeptidase that cleaves specific substrates following aspartate residues. The encoded protein undergoes posttranslational autoproteolytic processing to generate alpha and beta subunits, which reassemble into the active alpha2-beta2 heterotetramer. It is required to cleave MLL, a protein required for the maintenance of HOX gene expression, and TFIIA, a basal transcription factor. Alternatively spliced transcript variants have been described, but their biological validity has not been determined. [provided by RefSeq]. COMPLETENESS: complete on the 3' end.

**Synonyms:**

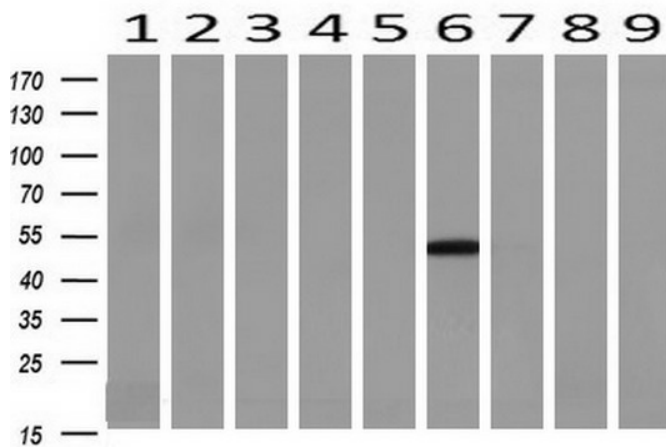
C20orf13; dj585l14.2

**Protein Families:**

Protease

**Product images:**


HEK293T cells were transfected with the pCMV6-ENTRY control (Cat# [PS100001], Left lane) or pCMV6-ENTRY TASP1 (Cat# [RC206835], Right lane) cDNA for 48 hrs and lysed. Equivalent amounts of cell lysates (5 ug per lane) were separated by SDS-PAGE and immunoblotted with anti-TASP1(Cat# [TA502257]). Positive lysates [LY402609] (100ug) and [LC402609] (20ug) can be purchased separately from OriGene.



Western blot analysis of extracts (10ug) from 9 Human tissue by using anti-TASP1 monoclonal antibody at 1:200 (1: Testis; 2: Omentum; 3: Uterus; 4: Breast; 5: Brain; 6: Liver; 7: Ovary; 8: Thyroid gland; 9: colon).