

## Product datasheet for **TA502251S**

### **PACSIN3 Mouse Monoclonal Antibody [Clone ID: OTI2A3]**

#### **Product data:**

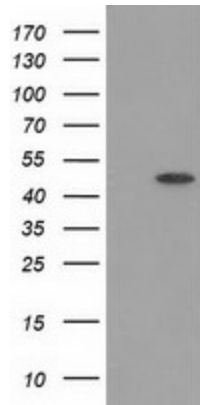
<b>Product Type:</b>	Primary Antibodies
<b>Clone Name:</b>	OTI2A3
<b>Applications:</b>	FC, WB
<b>Recommended Dilution:</b>	WB 1:200~500, FLOW 1:100
<b>Reactivity:</b>	Human, Dog, Rat, Monkey, Mouse
<b>Host:</b>	Mouse
<b>Isotype:</b>	IgG1
<b>Clonality:</b>	Monoclonal
<b>Immunogen:</b>	Full length human recombinant protein of human PACSIN3 (NP_057307) produced in HEK293T cell.
<b>Formulation:</b>	PBS (pH 7.3) containing 1% BSA, 50% glycerol and 0.02% sodium azide.
<b>Concentration:</b>	1 mg/ml
<b>Purification:</b>	Purified from mouse ascites fluids or tissue culture supernatant by affinity chromatography (protein A/G)
<b>Conjugation:</b>	Unconjugated
<b>Storage:</b>	Store at -20°C as received.
<b>Stability:</b>	Stable for 12 months from date of receipt.
<b>Predicted Protein Size:</b>	48.3 kDa
<b>Gene Name:</b>	protein kinase C and casein kinase substrate in neurons 3
<b>Database Link:</b>	<a href="#">NP_057307</a> <a href="#">Entrez Gene 80708 Mouse</a> <a href="#">Entrez Gene 311187 Rat</a> <a href="#">Entrez Gene 475984 Dog</a> <a href="#">Entrez Gene 713919 Monkey</a> <a href="#">Entrez Gene 29763 Human</a> <a href="#">Q9UKS6</a>
<b>Background:</b>	This gene is a member of the protein kinase C and casein kinase substrate in neurons family. The encoded protein is involved in linking the actin cytoskeleton with vesicle formation. Alternative splicing results in multiple transcript variants. [provided by RefSeq]
<b>Synonyms:</b>	SDPIII



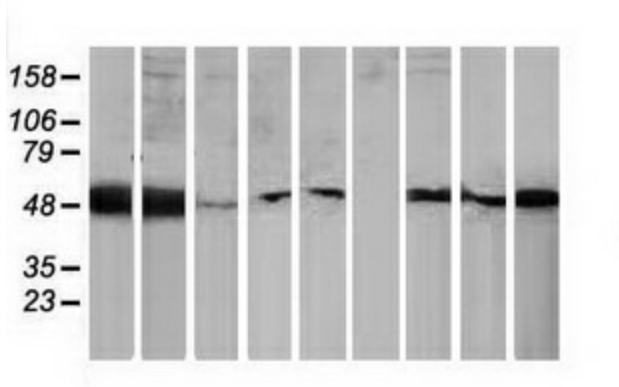
[View online »](#)

Protein Families: Druggable Genome

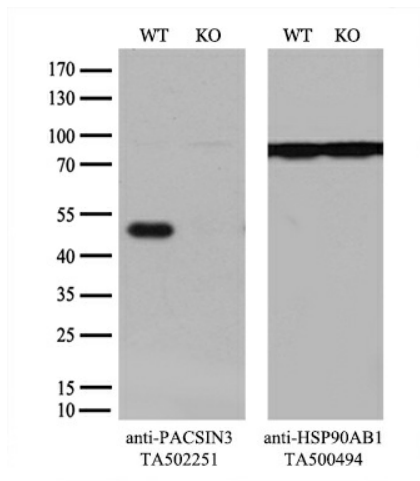
**Product images:**



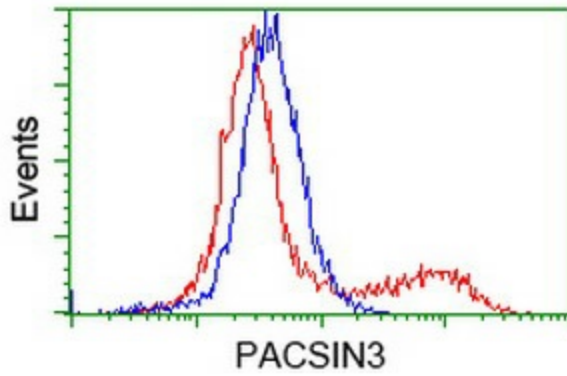
HEK293T cells were transfected with the pCMV6-ENTRY control (Left lane) or pCMV6-ENTRY PACSIN3 [RC204103], Right lane) cDNA for 48 hrs and lysed. Equivalent amounts of cell lysates (5 ug per lane) were separated by SDS-PAGE and immunoblotted with anti-PACSIN3. Positive lysates [LY414084] (100ug) and [LC414084] (20ug) can be purchased separately from OriGene.



Western blot analysis of extracts (35ug) from 9 different cell lines by using anti-PACSIN3 monoclonal antibody.



Equivalent amounts of cell lysates (10 ug per lane) of wild-type 293T cells (WT, Cat# LC810293T) and PACSIN3-Knockout 293T cells (KO, Cat# [LC812043]) were separated by SDS-PAGE and immunoblotted with anti-PACSIN3 monoclonal antibody [TA502251], (1:500). Then the blotted membrane was stripped and reprobed with anti-HSP90AB1 antibody ([TA500494]) as a loading control.



HEK293T cells transfected with either [RC204103] overexpress plasmid (Red) or empty vector control plasmid (Blue) were immunostained by anti-PACSIN3 antibody ([TA502251]), and then analyzed by flow cytometry.