

## Product datasheet for **TA502240AM**

### **PACSIN3 Mouse Monoclonal Antibody (Biotin conjugated) [Clone ID: OTI4C5]**

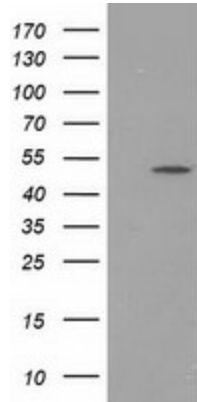
#### **Product data:**

Product Type:	Primary Antibodies
Clone Name:	OTI4C5
Applications:	FC, WB
Recommended Dilution:	WB 1:200~500, FLOW 1:100
Reactivity:	Human, Mouse, Rat
Host:	Mouse
Isotype:	IgG1
Clonality:	Monoclonal
Immunogen:	Full length human recombinant protein of human PACSIN3 (NP_057307) produced in HEK293T cell.
Formulation:	PBS (pH 7.3) containing 1% BSA, 50% glycerol and 0.02% sodium azide.
Concentration:	0.5 mg/ml
Purification:	Purified from mouse ascites fluids or tissue culture supernatant by affinity chromatography (protein A/G)
Conjugation:	Biotin
Storage:	Store at -20°C as received.
Stability:	Stable for 12 months from date of receipt.
Predicted Protein Size:	48.3 kDa
Gene Name:	protein kinase C and casein kinase substrate in neurons 3
Database Link:	<a href="#">NP_057307</a> <a href="#">Entrez Gene 80708 Mouse</a> <a href="#">Entrez Gene 311187 Rat</a> <a href="#">Entrez Gene 29763 Human</a> <a href="#">Q9UKS6</a>
Background:	This gene is a member of the protein kinase C and casein kinase substrate in neurons family. The encoded protein is involved in linking the actin cytoskeleton with vesicle formation. Alternative splicing results in multiple transcript variants. [provided by RefSeq]
Synonyms:	SDPIII
Protein Families:	Druggable Genome

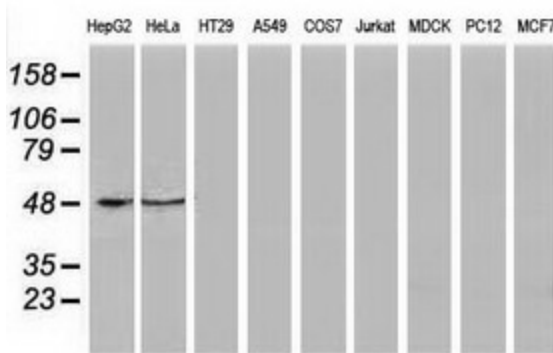


[View online »](#)

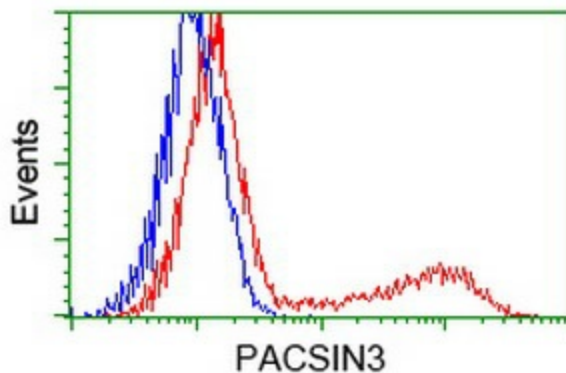
**Product images:**



HEK293T cells were transfected with the pCMV6-ENTRY control (Left lane) or pCMV6-ENTRY PACSIN3 ([RC204103], Right lane) cDNA for 48 hrs and lysed. Equivalent amounts of cell lysates (5 ug per lane) were separated by SDS-PAGE and immunoblotted with anti-PACSIN3. Positive lysates [LY414084] (100ug) and [LC414084] (20ug) can be purchased separately from OriGene.



Western blot analysis of extracts (35ug) from 9 different cell lines by using anti-PACSIN3 monoclonal antibody.



HEK293T cells transfected with either [RC204103] overexpress plasmid (Red) or empty vector control plasmid (Blue) were immunostained by anti-PACSIN3 antibody ([TA502240]), and then analyzed by flow cytometry.