

Product datasheet for **TA502237BM**

LMAN1 Mouse Monoclonal Antibody (HRP conjugated) [Clone ID: OT11C5]

Product data:

| | |
|-------------------------|--|
| Product Type: | Primary Antibodies |
| Clone Name: | OT11C5 |
| Applications: | FC, IHC, WB |
| Recommended Dilution: | WB 1:500~2000, IHC 1:150, FLOW 1:100 |
| Reactivity: | Human, Monkey, Mouse, Rat |
| Host: | Mouse |
| Isotype: | IgG1 |
| Clonality: | Monoclonal |
| Immunogen: | Full length human recombinant protein of human LMAN1(NP_005561) produced in Hek293T cell. |
| Formulation: | PBS (pH 7.3) containing 1% BSA, 50% glycerol. |
| Concentration: | 0.5 mg/ml |
| Purification: | Purified from mouse ascites fluids or tissue culture supernatant by affinity chromatography (protein A/G) |
| Conjugation: | HRP |
| Storage: | Store at -20°C as received. |
| Stability: | Stable for 12 months from date of receipt. |
| Predicted Protein Size: | 54.2 kDa |
| Gene Name: | lectin, mannose binding 1 |
| Database Link: | NP_005561 Entrez Gene 70361 Mouse Entrez Gene 116666 Rat Entrez Gene 697449 Monkey Entrez Gene 3998 Human P49257 |



[View online »](#)

Background:

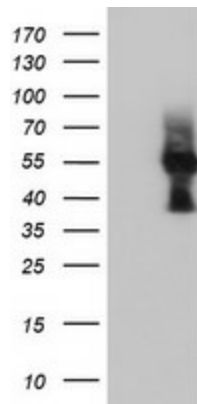
The protein encoded by this gene is a type I integral membrane protein localized in the intermediate region between the endoplasmic reticulum and the Golgi, presumably recycling between the two compartments. The protein is a mannose-specific lectin and is a member of a novel family of plant lectin homologs in the secretory pathway of animal cells. Mutations in the gene are associated with a coagulation defect. Using positional cloning, the gene was identified as the disease gene leading to combined factor V-factor VIII deficiency, a rare, autosomal recessive disorder in which both coagulation factors V and VIII are diminished. [provided by RefSeq]

Synonyms:

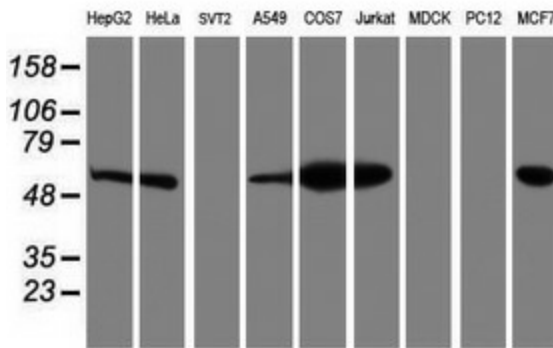
ERGIC-53; ERGIC53; F5F8D; FMFD1; gp58; MCFD1; MR60

Protein Families:

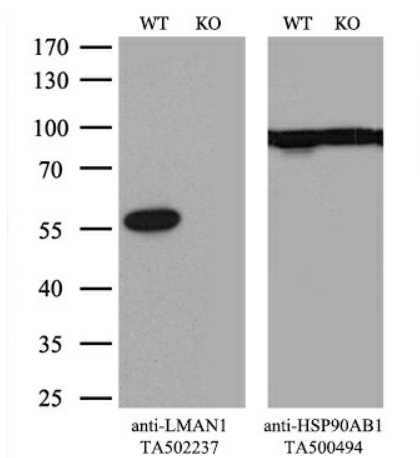
Druggable Genome, Transmembrane

Product images:


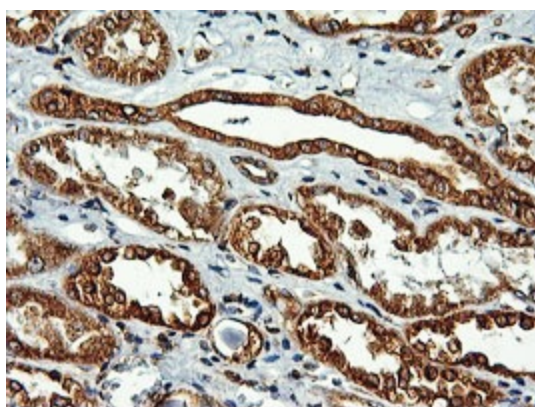
HEK293T cells were transfected with the pCMV6-ENTRY control (Left lane) or pCMV6-ENTRY LMAN1 ([RC207088], Right lane) cDNA for 48 hrs and lysed. Equivalent amounts of cell lysates (5 ug per lane) were separated by SDS-PAGE and immunoblotted with anti-LMAN1. Positive lysates [LY401709] (100ug) and [LC401709] (20ug) can be purchased separately from OriGene.



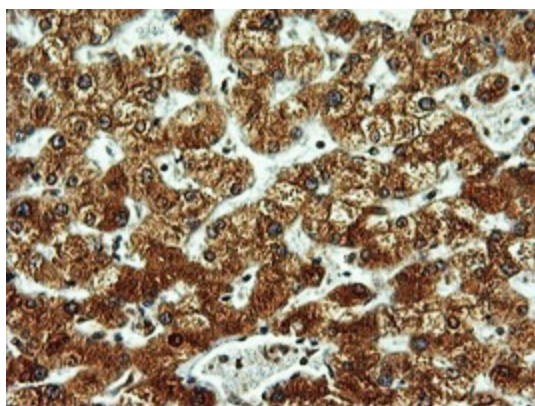
Western blot analysis of extracts (35ug) from 9 different cell lines by using anti-LMAN1 monoclonal antibody.



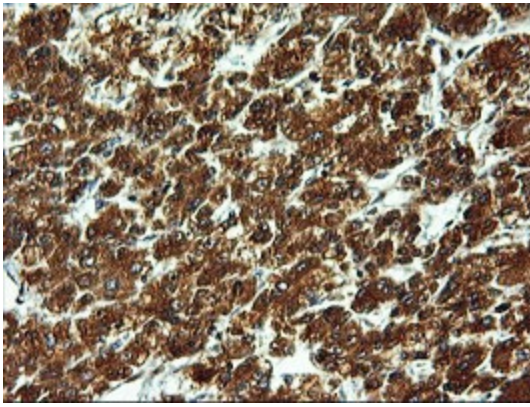
Equivalent amounts of cell lysates (10 ug per lane) of wild-type 293T cells (WT, Cat# LC810293T) and LMAN1-Knockout 293T cells (KO, Cat# [LC812175]) were separated by SDS-PAGE and immunoblotted with anti-LMAN1 monoclonal antibody [TA502237], (1:500). Then the blotted membrane was stripped and reprobed with anti-HSP90AB1 antibody ([TA500494]) as a loading control.



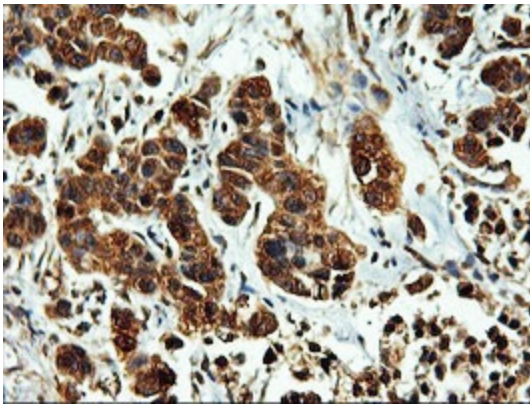
Immunohistochemical staining of paraffin-embedded Human Kidney tissue within the normal limits using anti-LMAN1 mouse monoclonal antibody. (Heat-induced epitope retrieval by 10mM citric buffer, pH6.0, 100°C for 10min, [TA502237])



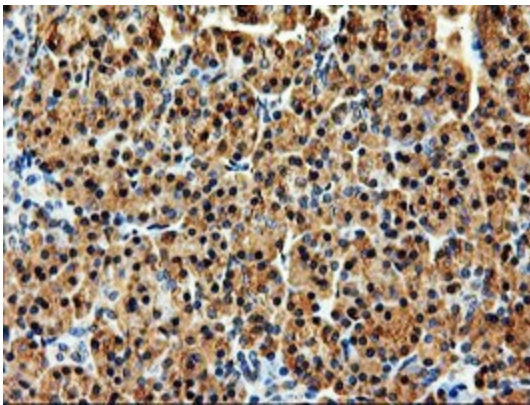
Immunohistochemical staining of paraffin-embedded Human liver tissue within the normal limits using anti-LMAN1 mouse monoclonal antibody. (Heat-induced epitope retrieval by 10mM citric buffer, pH6.0, 100°C for 10min, [TA502237])



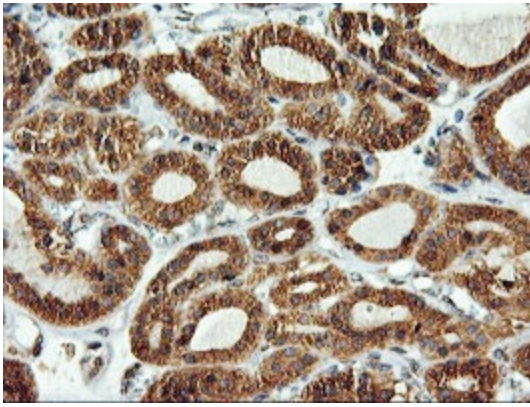
Immunohistochemical staining of paraffin-embedded Carcinoma of Human liver tissue using anti-LMAN1 mouse monoclonal antibody. (Heat-induced epitope retrieval by 10mM citric buffer, pH6.0, 100°C for 10min, [TA502237])



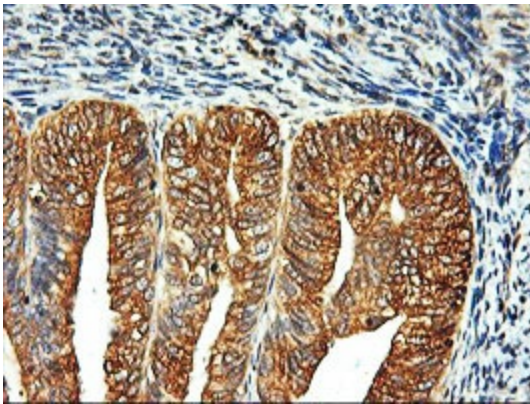
Immunohistochemical staining of paraffin-embedded Carcinoma of Human lung tissue using anti-LMAN1 mouse monoclonal antibody. (Heat-induced epitope retrieval by 10mM citric buffer, pH6.0, 100°C for 10min, [TA502237])



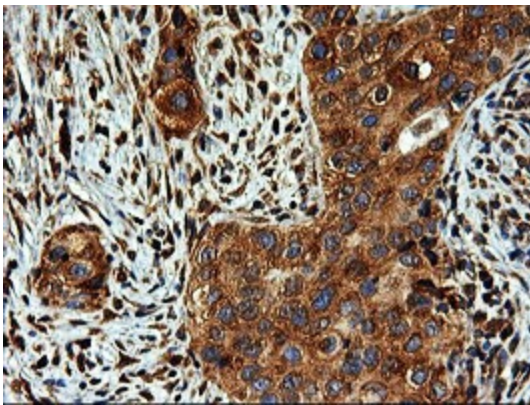
Immunohistochemical staining of paraffin-embedded Human pancreas tissue within the normal limits using anti-LMAN1 mouse monoclonal antibody. (Heat-induced epitope retrieval by 10mM citric buffer, pH6.0, 100°C for 10min, [TA502237])



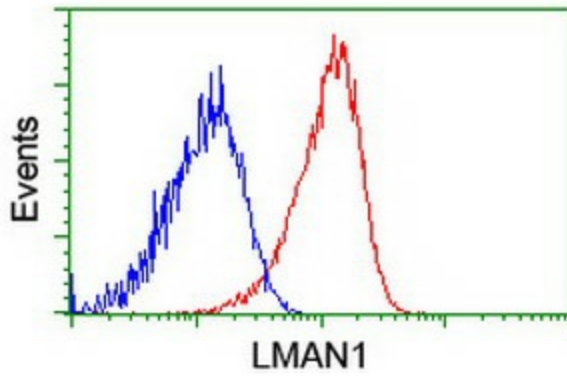
Immunohistochemical staining of paraffin-embedded Carcinoma of Human thyroid tissue using anti-LMAN1 mouse monoclonal antibody. (Heat-induced epitope retrieval by 10mM citric buffer, pH6.0, 100°C for 10min, [TA502237])



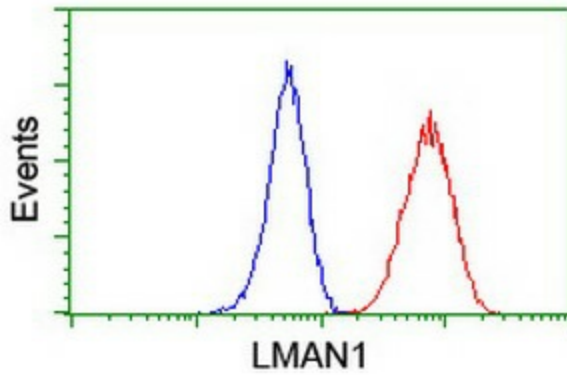
Immunohistochemical staining of paraffin-embedded Adenocarcinoma of Human endometrium tissue using anti-LMAN1 mouse monoclonal antibody. (Heat-induced epitope retrieval by 10mM citric buffer, pH6.0, 100°C for 10min, [TA502237])



Immunohistochemical staining of paraffin-embedded Carcinoma of Human bladder tissue using anti-LMAN1 mouse monoclonal antibody. (Heat-induced epitope retrieval by 10mM citric buffer, pH6.0, 100°C for 10min, [TA502237])



Flow cytometric Analysis of HeLa cells, using anti-LMAN1 antibody ([TA502237]), (Red), compared to a nonspecific negative control antibody, (Blue).



Flow cytometric Analysis of Jurkat cells, using anti-LMAN1 antibody ([TA502237]), (Red), compared to a nonspecific negative control antibody, (Blue).