

## Product datasheet for **TA502228S**

### CDCP1 Mouse Monoclonal Antibody [Clone ID: OTI2C1]

#### Product data:

Product Type:	Primary Antibodies
Clone Name:	OTI2C1
Applications:	FC, IF, IHC, WB
Recommended Dilution:	WB 1:200~500, IHC 1:150, IF 1:100, FLOW 1:100
Reactivity:	Human
Host:	Mouse
Isotype:	IgG1
Clonality:	Monoclonal
Immunogen:	Full length human recombinant protein of human CDCP1 (NP_073753) produced in HEK293T cell.
Formulation:	PBS (pH 7.3) containing 1% BSA, 50% glycerol and 0.02% sodium azide.
Concentration:	0.58 mg/ml
Purification:	Purified from mouse ascites fluids or tissue culture supernatant by affinity chromatography (protein A/G)
Conjugation:	Unconjugated
Storage:	Store at -20°C as received.
Stability:	Stable for 12 months from date of receipt.
Predicted Protein Size:	92.8 kDa
Gene Name:	CUB domain containing protein 1
Database Link:	<a href="#">NP_073753</a> <a href="#">Entrez Gene 64866 Human</a> <a href="#">Q9H5V8</a>
Background:	The protein encoded by this gene is a transmembrane protein containing three extracellular CUB domains. This protein is found to be overexpressed in colon and lung cancers. Its expression level is correlated with the metastatic ability of carcinoma cells. This protein is located on the cell surface. It has been shown to be tyrosine phosphorylated in a cancer cell line. Alternatively spliced transcript variants encoding distinct isoforms have been reported. [provided by RefSeq]

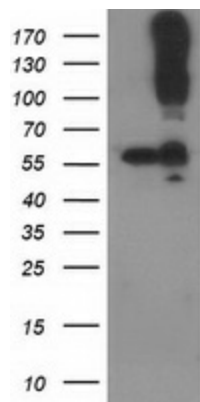

[View online »](#)

**Synonyms:** CD318; SIMA135; TRASK

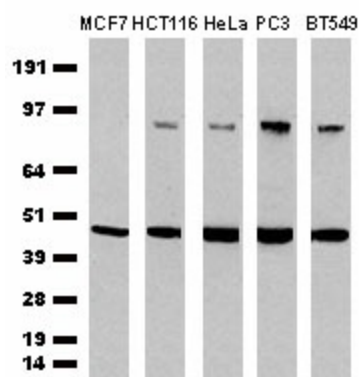
**Note:** This antibody also reacts with SNX8 and TRAF1

**Protein Families:** ES Cell Differentiation/IPS, Transmembrane

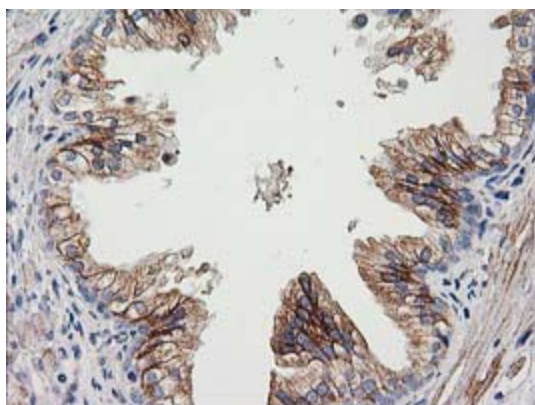
## Product images:



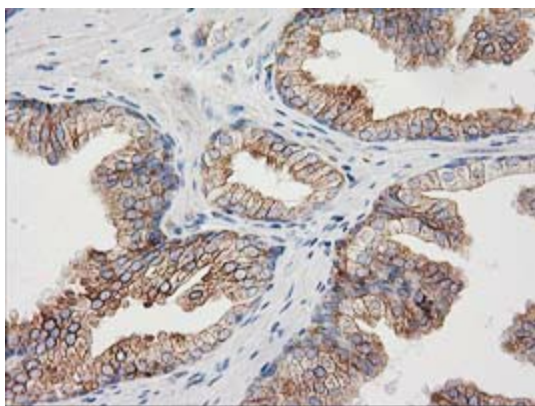
HEK293T cells were transfected with the pCMV6-ENTRY control (Cat# [PS100001], Left lane) or pCMV6-ENTRY CDCP1 (Cat# [RC220633], Right lane) cDNA for 48 hrs and lysed. Equivalent amounts of cell lysates (5 ug per lane) were separated by SDS-PAGE and immunoblotted with anti-CDCP1 (Cat# [TA502228]). Positive lysates [LY402953] (100ug) and [LC402953] (20ug) can be purchased separately from OriGene.



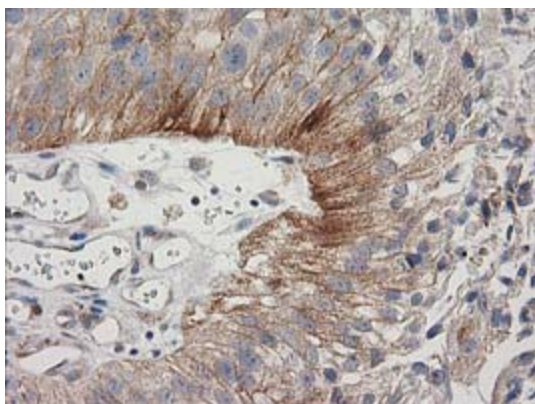
Western Blot analysis of extracts (35ug) from 5 different cell lines by using anti-CDCP1 monoclonal antibody (Clone 2C1)



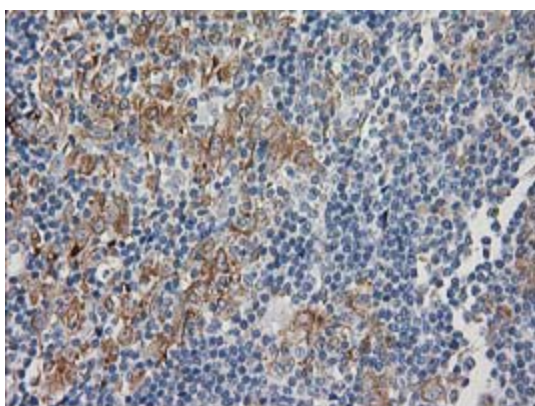
Immunohistochemical staining of paraffin-embedded Human prostate tissue within the normal limits using anti-CDCP1 mouse monoclonal antibody. (Heat-induced epitope retrieval by 10mM citric buffer, pH6.0, 100°C for 10min, [TA502228])



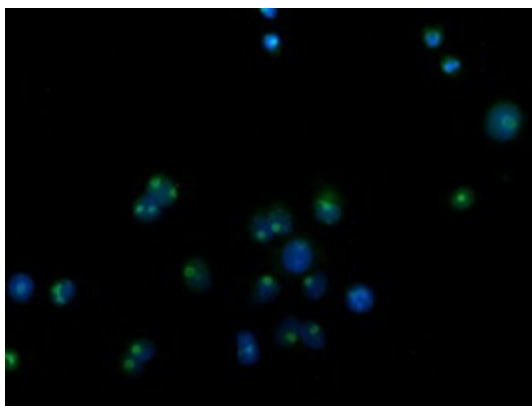
Immunohistochemical staining of paraffin-embedded Carcinoma of Human prostate tissue using anti-CDCP1 mouse monoclonal antibody. (Heat-induced epitope retrieval by 10mM citric buffer, pH6.0, 100°C for 10min, [TA502228])



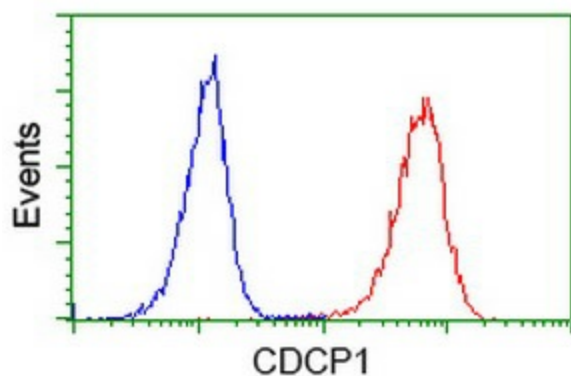
Immunohistochemical staining of paraffin-embedded Carcinoma of Human bladder tissue using anti-CDCP1 mouse monoclonal antibody. (Heat-induced epitope retrieval by 10mM citric buffer, pH6.0, 100°C for 10min, [TA502228])



Immunohistochemical staining of paraffin-embedded Human lymphoma tissue using anti-CDCP1 mouse monoclonal antibody. (Heat-induced epitope retrieval by 10mM citric buffer, pH6.0, 100°C for 10min, [TA502228])



Anti-CDCP1 mouse monoclonal antibody ([TA502228]) immunofluorescent staining of COS7 cells transiently transfected by pCMV6-ENTRY CDCP1 ([RC220633]).



Flow cytometric Analysis of Jurkat cells, using anti-CDCP1 antibody ([TA502228]), (Red), compared to a nonspecific negative control antibody (TA50011), (Blue).