

## Product datasheet for **TA502227S**

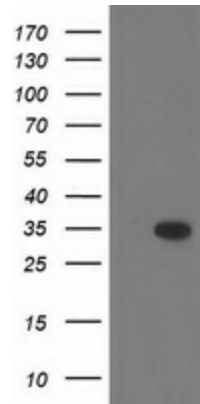
### CTDSP1 Mouse Monoclonal Antibody [Clone ID: OTI1G2]

#### Product data:

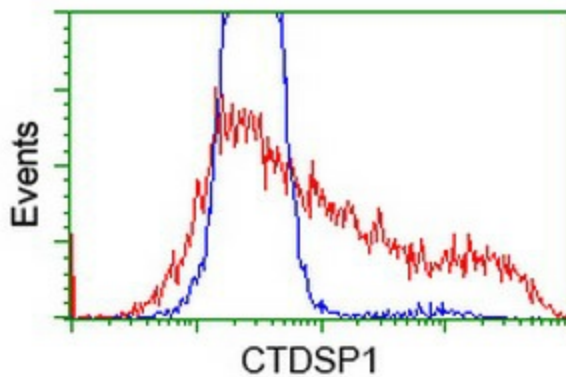
Product Type:	Primary Antibodies
Clone Name:	OTI1G2
Applications:	FC, WB
Recommended Dilution:	WB 1:500, FLOW 1:100
Reactivity:	Human, Mouse, Rat
Host:	Mouse
Isotype:	IgG1
Clonality:	Monoclonal
Immunogen:	Full length human recombinant protein of human CTDSP1 (NP_067021) produced in E.coli.
Formulation:	PBS (pH 7.3) containing 1% BSA, 50% glycerol and 0.02% sodium azide.
Concentration:	0.3 mg/ml
Purification:	Purified from mouse ascites fluids or tissue culture supernatant by affinity chromatography (protein A/G)
Conjugation:	Unconjugated
Storage:	Store at -20°C as received.
Stability:	Stable for 12 months from date of receipt.
Predicted Protein Size:	29 kDa
Gene Name:	CTD small phosphatase 1
Database Link:	<a href="#">NP_067021</a> <a href="#">Entrez Gene 227292 Mouse</a> <a href="#">Entrez Gene 363249 Rat</a> <a href="#">Entrez Gene 58190 Human</a> <a href="#">Q9GZU7</a>
Synonyms:	NIF3; NLI-IF; NLIIF; SCP1
Protein Families:	Phosphatase



[View online »](#)

**Product images:**

HEK293T cells were transfected with the pCMV6-ENTRY control (Left lane) or pCMV6-ENTRY CTDSP1 ([RC212037], Right lane) cDNA for 48 hrs and lysed. Equivalent amounts of cell lysates (5 ug per lane) were separated by SDS-PAGE and immunoblotted with anti-CTDSP1. Positive lysates [LY412037] (100ug) and [LC412037] (20ug) can be purchased separately from OriGene.



HEK293T cells transfected with either [RC212037] overexpress plasmid (Red) or empty vector control plasmid (Blue) were immunostained by anti-CTDSP1 antibody ([TA502227]), and then analyzed by flow cytometry.