

Product datasheet for **TA502226M**

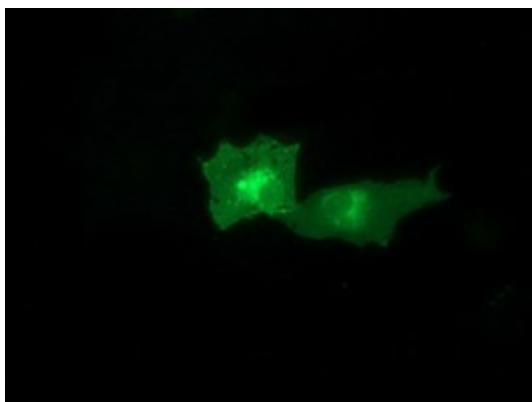
CTDSP1 Mouse Monoclonal Antibody [Clone ID: OTI1D3]

Product data:

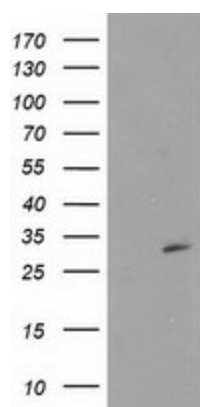
| | |
|-------------------------|--|
| Product Type: | Primary Antibodies |
| Clone Name: | OTI1D3 |
| Applications: | IF, WB |
| Recommended Dilution: | WB 1:200~500, IF 1:100 |
| Reactivity: | Human, Dog, Rat, Monkey, Mouse |
| Host: | Mouse |
| Isotype: | IgG1 |
| Clonality: | Monoclonal |
| Immunogen: | Full length human recombinant protein of human CTDSP1 (NP_067021) produced in E.coli. |
| Formulation: | PBS (pH 7.3) containing 1% BSA, 50% glycerol and 0.02% sodium azide. |
| Concentration: | 0.7 mg/ml |
| Purification: | Purified from mouse ascites fluids or tissue culture supernatant by affinity chromatography (protein A/G) |
| Conjugation: | Unconjugated |
| Storage: | Store at -20°C as received. |
| Stability: | Stable for 12 months from date of receipt. |
| Predicted Protein Size: | 29 kDa |
| Gene Name: | CTD small phosphatase 1 |
| Database Link: | NP_067021 Entrez Gene 227292 Mouse Entrez Gene 363249 Rat Entrez Gene 100856365 Dog Entrez Gene 698824 Monkey Entrez Gene 58190 Human Q9GZU7 |
| Synonyms: | NIF3; NLI-IF; NLIIF; SCP1 |
| Protein Families: | Phosphatase |


[View online »](#)

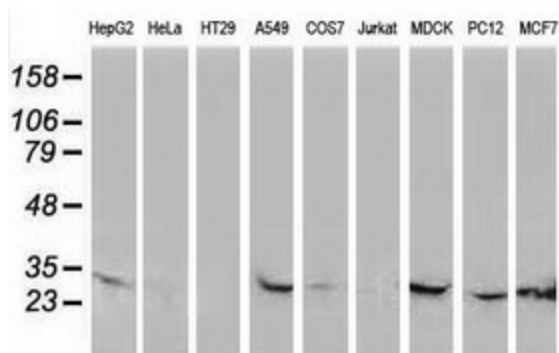
Product images:



Anti-CTDSP1 mouse monoclonal antibody ([TA502226]) immunofluorescent staining of COS7 cells transiently transfected by pCMV6-ENTRY CTDSP1 ([RC212037]).



HEK293T cells were transfected with the pCMV6-ENTRY control (Left lane) or pCMV6-ENTRY CTDSP1 ([RC212037], Right lane) cDNA for 48 hrs and lysed. Equivalent amounts of cell lysates (5 ug per lane) were separated by SDS-PAGE and immunoblotted with anti-CTDSP1. Positive lysates [LY412037] (100ug) and [LC412037] (20ug) can be purchased separately from OriGene.



Western blot analysis of extracts (35ug) from 9 different cell lines by using anti-CTDSP1 monoclonal antibody.