

## Product datasheet for **TA502224S**

### SNTG1 Mouse Monoclonal Antibody [Clone ID: OTI3G10]

#### Product data:

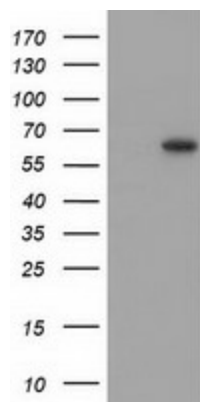
Product Type:	Primary Antibodies
Clone Name:	OTI3G10
Applications:	IF, WB
Recommended Dilution:	WB 1:2000, IF 1:100
Reactivity:	Human, Mouse, Rat
Host:	Mouse
Isotype:	IgG1
Clonality:	Monoclonal
Immunogen:	Full length human recombinant protein of human SNTG1 (NP_061840) produced in HEK293T cell.
Formulation:	PBS (pH 7.3) containing 1% BSA, 50% glycerol and 0.02% sodium azide.
Concentration:	0.76 mg/ml
Purification:	Purified from mouse ascites fluids or tissue culture supernatant by affinity chromatography (protein A/G)
Conjugation:	Unconjugated
Storage:	Store at -20°C as received.
Stability:	Stable for 12 months from date of receipt.
Predicted Protein Size:	57.8 kDa
Gene Name:	syntrophin gamma 1
Database Link:	<a href="#">NP_061840</a> <a href="#">Entrez Gene 71096 Mouse</a> <a href="#">Entrez Gene 500394 Rat</a> <a href="#">Entrez Gene 54212 Human</a> <a href="#">Q9NSN8</a>
Background:	The protein encoded by this gene is a member of the syntrophin family. Syntrophins are cytoplasmic peripheral membrane proteins that typically contain 2 pleckstrin homology (PH) domains, a PDZ domain that bisects the first PH domain, and a C-terminal domain that mediates dystrophin binding. This gene is specifically expressed in the brain. Transcript variants for this gene have been described, but their full-length nature has not been determined. [provided by RefSeq]



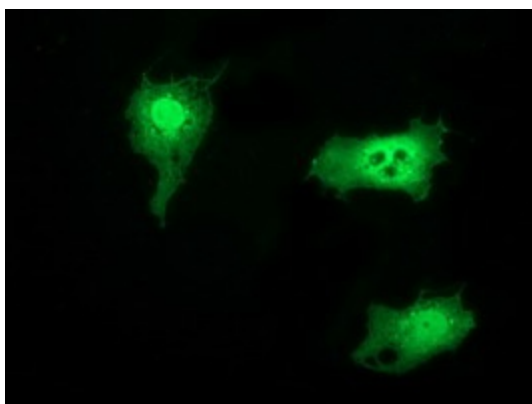
[View online »](#)

Synonyms: G1SYN; SYN4

### Product images:



HEK293T cells were transfected with the pCMV6-ENTRY control (Cat# [PS100001], Left lane) or pCMV6-ENTRY SNTG1 (Cat# [RC211170], Right lane) cDNA for 48 hrs and lysed. Equivalent amounts of cell lysates (5 ug per lane) were separated by SDS-PAGE and immunoblotted with anti-SNTG1 (Cat# [TA502224]). Positive lysates [LY412854] (100ug) and [LC412854] (20ug) can be purchased separately from OriGene.



Anti-SNTG1 mouse monoclonal antibody ([TA502224]) immunofluorescent staining of COS7 cells transiently transfected by pCMV6-ENTRY SNTG1 ([RC211170]).