

## Product datasheet for **TA502224BM**

### **SNTG1 Mouse Monoclonal Antibody (HRP conjugated) [Clone ID: OTI3G10]**

#### **Product data:**

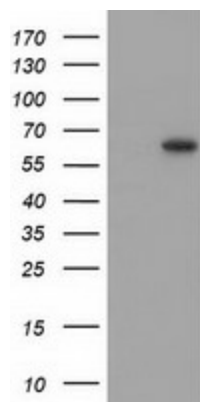
|                                |   |
|--------------------------------|---|
| <b>Product Type:</b>           | Primary Antibodies  |
| <b>Clone Name:</b>             | OTI3G10   |
| <b>Applications:</b>           | IF, WB  |
| <b>Recommended Dilution:</b>   | WB 1:2000, IF 1:100   |
| <b>Reactivity:</b>             | Human, Mouse, Rat   |
| <b>Host:</b>                   | Mouse   |
| <b>Isotype:</b>                | IgG1  |
| <b>Clonality:</b>              | Monoclonal  |
| <b>Immunogen:</b>              | Full length human recombinant protein of human SNTG1 (NP_061840) produced in HEK293T cell.  |
| <b>Formulation:</b>            | PBS (pH 7.3) containing 1% BSA, 50% glycerol.   |
| <b>Concentration:</b>          | 0.5 mg/ml   |
| <b>Purification:</b>           | Purified from mouse ascites fluids or tissue culture supernatant by affinity chromatography (protein A/G)   |
| <b>Conjugation:</b>            | HRP   |
| <b>Storage:</b>                | Store at -20°C as received.   |
| <b>Stability:</b>              | Stable for 12 months from date of receipt.  |
| <b>Predicted Protein Size:</b> | 57.8 kDa  |
| <b>Gene Name:</b>              | syntrophin gamma 1  |
| <b>Database Link:</b>          | <a href="#">NP_061840</a><br><a href="#">Entrez Gene 71096 Mouse</a> <a href="#">Entrez Gene 500394 Rat</a> <a href="#">Entrez Gene 54212 Human</a><br><a href="#">Q9NSN8</a>   |
| <b>Background:</b>             | The protein encoded by this gene is a member of the syntrophin family. Syntrophins are cytoplasmic peripheral membrane proteins that typically contain 2 pleckstrin homology (PH) domains, a PDZ domain that bisects the first PH domain, and a C-terminal domain that mediates dystrophin binding. This gene is specifically expressed in the brain. Transcript variants for this gene have been described, but their full-length nature has not been determined. [provided by RefSeq] |



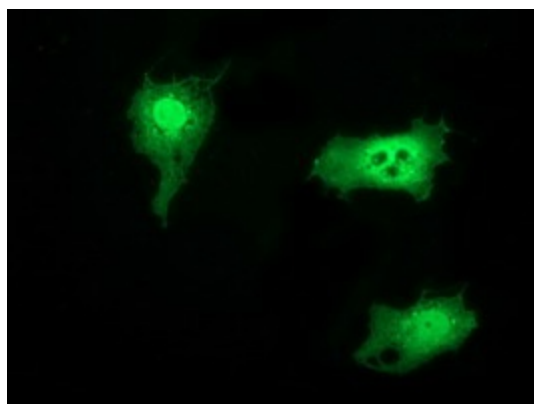
[View online »](#)

Synonyms: G1SYN; SYN4

### Product images:



HEK293T cells were transfected with the pCMV6-ENTRY control (Cat# [PS100001], Left lane) or pCMV6-ENTRY SNTG1 (Cat# [RC211170], Right lane) cDNA for 48 hrs and lysed. Equivalent amounts of cell lysates (5 ug per lane) were separated by SDS-PAGE and immunoblotted with anti-SNTG1 (Cat# [TA502224]). Positive lysates [LY412854] (100ug) and [LC412854] (20ug) can be purchased separately from OriGene.



Anti-SNTG1 mouse monoclonal antibody ([TA502224]) immunofluorescent staining of COS7 cells transiently transfected by pCMV6-ENTRY SNTG1 ([RC211170]).