

## Product datasheet for TA502220

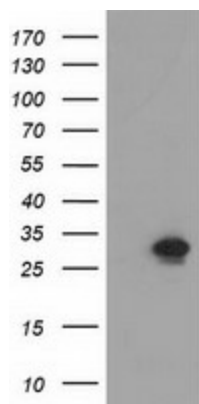
### NMNAT1 Mouse Monoclonal Antibody [Clone ID: OT11G4]

#### Product data:

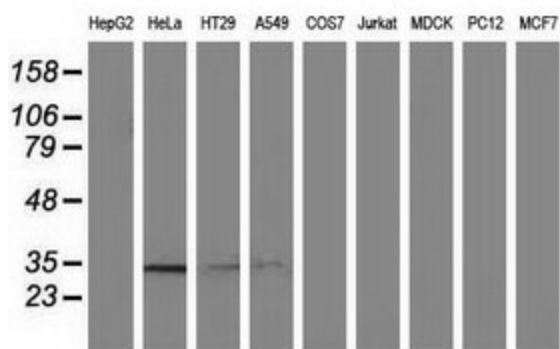
Product Type:	Primary Antibodies
Clone Name:	OT11G4
Applications:	FC, IHC, WB
Recommend Dilution:	WB 1:500~2000, IHC 1:150, FLOW 1:100
Reactivity:	Human
Host:	Mouse
Isotype:	IgG1
Clonality:	Monoclonal
Immunogen:	Full length human recombinant protein of human NMNAT1 (NP_073624) produced in HEK293T cell.
Formulation:	PBS (PH 7.3) containing 1% BSA, 50% glycerol and 0.02% sodium azide.
Concentration:	0.67 mg/ml
Purification:	Purified from mouse ascites fluids by affinity chromatography
Predicted Protein Size:	31.8 kDa
Gene Name:	nicotinamide nucleotide adenylyltransferase 1
Database Link:	<a href="#">NP_073624</a> <a href="#">Entrez Gene 64802</a> <a href="#">Human</a>
Background:	The coenzyme NAD and its derivatives are involved in hundreds of metabolic redox reactions and are utilized in protein ADP-ribosylation, histone deacetylation, and in some Ca(2+) signaling pathways. NMNAT (EC 2.7.7.1) is a central enzyme in NAD biosynthesis, catalyzing the condensation of nicotinamide mononucleotide (NMN) or nicotinic acid mononucleotide (NaMN) with the AMP moiety of ATP to form NAD or NaAD (Zhang et al., 2003 [PubMed 12574164]). [supplied by OMIM]
Synonyms:	LCA9; NMNAT; PNAT1
Protein Pathways:	Metabolic pathways, Nicotinate and nicotinamide metabolism



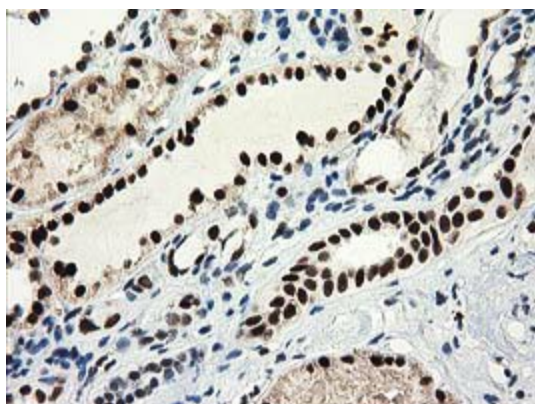
[View online »](#)

**Product images:**


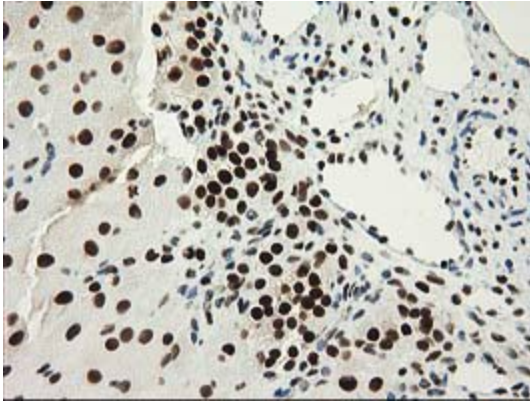
HEK293T cells were transfected with the pCMV6-ENTRY control (Left lane) or pCMV6-ENTRY NMNAT1 (RC204825, Right lane) cDNA for 48 hrs and lysed. Equivalent amounts of cell lysates (5 ug per lane) were separated by SDS-PAGE and immunoblotted with anti-NMNAT1. Positive lysates LY402948 (100ug) and LC402948 (20ug) can be purchased separately from OriGene.



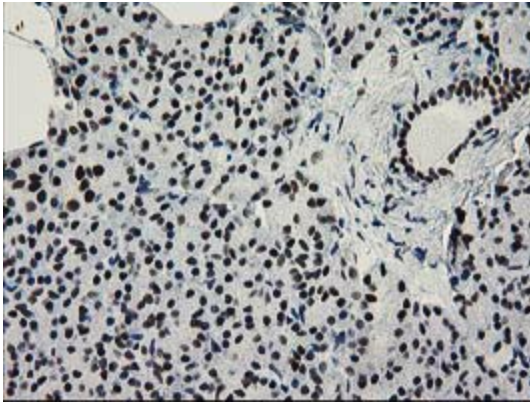
Western blot analysis of extracts (35ug) from 9 different cell lines by using anti-NMNAT1 monoclonal antibody.



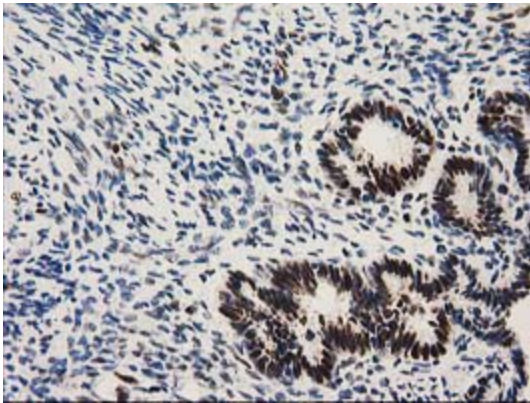
Immunohistochemical staining of paraffin-embedded Human Kidney tissue within the normal limits using anti-NMNAT1 mouse monoclonal antibody. (Heat-induced epitope retrieval by 10mM citric buffer, pH6.0, 100°C for 10min, TA502220)



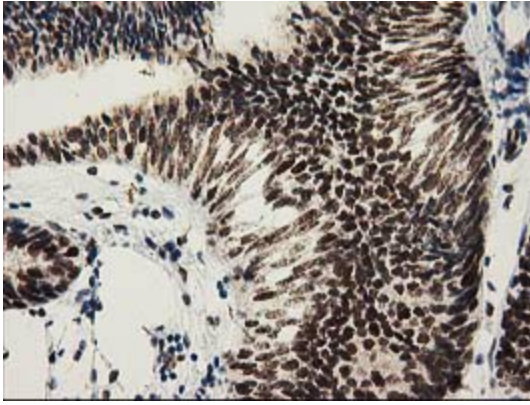
Immunohistochemical staining of paraffin-embedded Human Ovary tissue within the normal limits using anti-NMNAT1 mouse monoclonal antibody. (Heat-induced epitope retrieval by 10mM citric buffer, pH6.0, 100°C for 10min, TA502220)



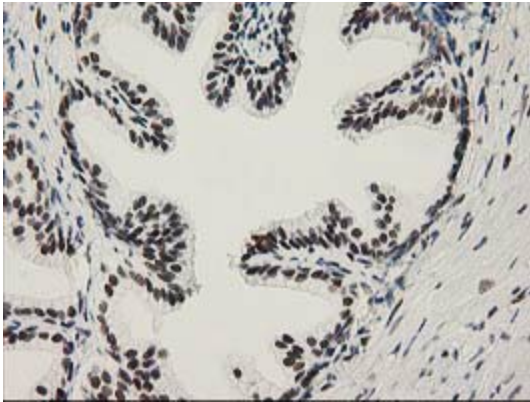
Immunohistochemical staining of paraffin-embedded Human pancreas tissue within the normal limits using anti-NMNAT1 mouse monoclonal antibody. (Heat-induced epitope retrieval by 10mM citric buffer, pH6.0, 100°C for 10min, TA502220)



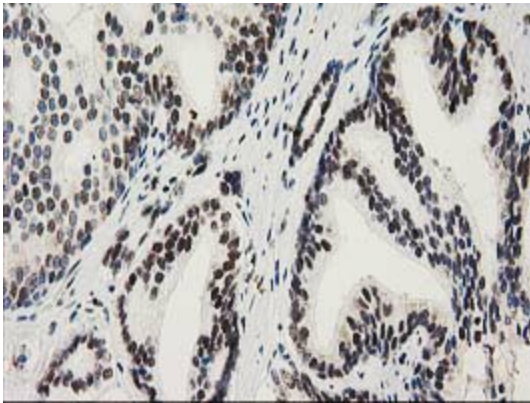
Immunohistochemical staining of paraffin-embedded Human endometrium tissue within the normal limits using anti-NMNAT1 mouse monoclonal antibody. (Heat-induced epitope retrieval by 10mM citric buffer, pH6.0, 100°C for 10min, TA502220)



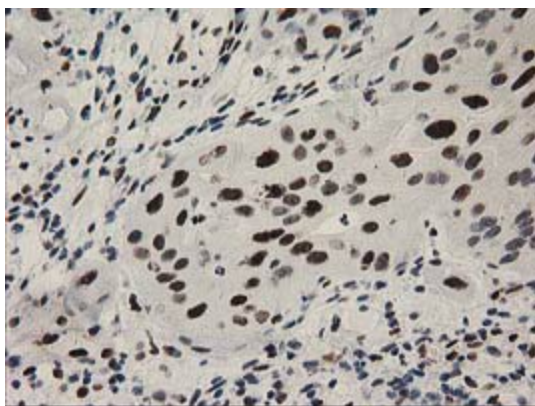
Immunohistochemical staining of paraffin-embedded Adenocarcinoma of Human endometrium tissue using anti-NMNAT1 mouse monoclonal antibody. (Heat-induced epitope retrieval by 10mM citric buffer, pH6.0, 100°C for 10min, TA502220)



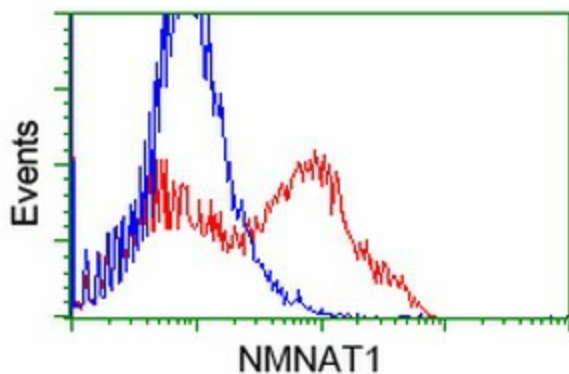
Immunohistochemical staining of paraffin-embedded Human prostate tissue within the normal limits using anti-NMNAT1 mouse monoclonal antibody. (Heat-induced epitope retrieval by 10mM citric buffer, pH6.0, 100°C for 10min, TA502220)



Immunohistochemical staining of paraffin-embedded Carcinoma of Human prostate tissue using anti-NMNAT1 mouse monoclonal antibody. (Heat-induced epitope retrieval by 10mM citric buffer, pH6.0, 100°C for 10min, TA502220)



Immunohistochemical staining of paraffin-embedded Carcinoma of Human bladder tissue using anti-NMNAT1 mouse monoclonal antibody. (Heat-induced epitope retrieval by 10mM citric buffer, pH6.0, 100°C for 10min, TA502220)



HEK293T cells transfected with either RC204825 overexpress plasmid (Red) or empty vector control plasmid (Blue) were immunostained by anti-NMNAT1 antibody (TA502220), and then analyzed by flow cytometry.