

## Product datasheet for **TA502210S**

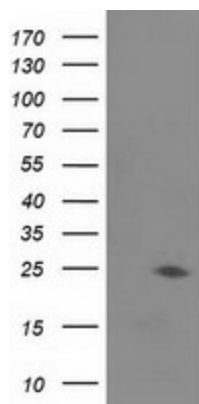
### Josephin 1 (JOSD1) Mouse Monoclonal Antibody [Clone ID: OTI3B11]

#### Product data:

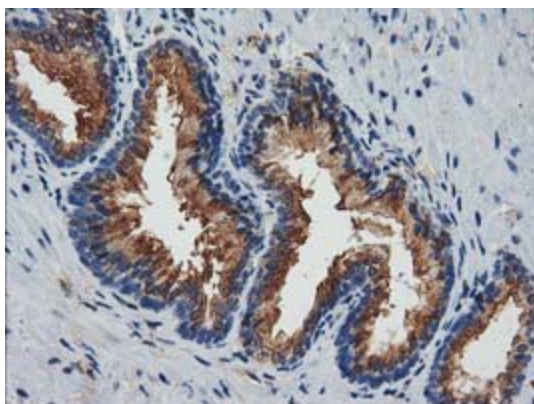
Product Type:	Primary Antibodies
Clone Name:	OTI3B11
Applications:	IHC, WB
Recommended Dilution:	WB 1:500, IHC 1:150
Reactivity:	Human, Rat
Host:	Mouse
Isotype:	IgG1
Clonality:	Monoclonal
Immunogen:	Full length human recombinant protein of human JOSD1 (NP_055691) produced in HEK293T cell.
Formulation:	PBS (pH 7.3) containing 1% BSA, 50% glycerol and 0.02% sodium azide.
Concentration:	0.71 mg/ml
Purification:	Purified from mouse ascites fluids or tissue culture supernatant by affinity chromatography (protein A/G)
Conjugation:	Unconjugated
Storage:	Store at -20°C as received.
Stability:	Stable for 12 months from date of receipt.
Predicted Protein Size:	23 kDa
Gene Name:	Josephin domain containing 1
Database Link:	<a href="#">NP_055691</a> <a href="#">Entrez Gene 315134 Rat</a> <a href="#">Entrez Gene 9929 Human</a> <a href="#">Q15040</a>
Synonyms:	dj508I15.2
Protein Families:	Druggable Genome



[View online »](#)

**Product images:**

HEK293T cells were transfected with the pCMV6-ENTRY control (Cat# [PS100001], Left lane) or pCMV6-ENTRY JOSD1 (Cat# [RC201968], Right lane) cDNA for 48 hrs and lysed. Equivalent amounts of cell lysates (5 ug per lane) were separated by SDS-PAGE and immunoblotted with anti-JOSD1 (Cat# [TA502210]). Positive lysates [LY414963] (100ug) and [LC414963] (20ug) can be purchased separately from OriGene.



Immunohistochemical staining of paraffin-embedded Human prostate tissue within the normal limits using anti-JOSD1 mouse monoclonal antibody. (Heat-induced epitope retrieval by 10mM citric buffer, pH6.0, 100°C for 10min, [TA502210])