

Product datasheet for **TA502209BM**

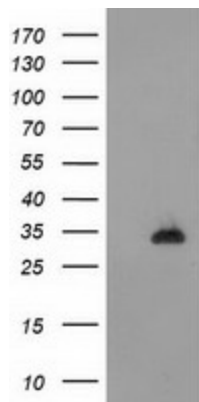
CTDSP1 Mouse Monoclonal Antibody (HRP conjugated) [Clone ID: OTI1A7]

Product data:

Product Type:	Primary Antibodies
Clone Name:	OTI1A7
Applications:	WB
Recommended Dilution:	WB 1:2000
Reactivity:	Human, Mouse, Rat
Host:	Mouse
Isotype:	IgG1
Clonality:	Monoclonal
Immunogen:	Full length human recombinant protein of human CTDSP1 (NP_067021) produced in E.coli.
Formulation:	PBS (pH 7.3) containing 1% BSA, 50% glycerol.
Concentration:	0.5 mg/ml
Purification:	Purified from mouse ascites fluids or tissue culture supernatant by affinity chromatography (protein A/G)
Conjugation:	HRP
Storage:	Store at -20°C as received.
Stability:	Stable for 12 months from date of receipt.
Predicted Protein Size:	29.0 kDa
Gene Name:	CTD small phosphatase 1
Database Link:	NP_067021 Entrez Gene 227292 Mouse Entrez Gene 363249 Rat Entrez Gene 58190 Human Q9GZU7
Synonyms:	NIF3; NLI-IF; NLIIF; SCP1
Protein Families:	Phosphatase



[View online »](#)

Product images:

HEK293T cells were transfected with the pCMV6-ENTRY control (Left lane) or pCMV6-ENTRY CTDSP1 ([RC212037], Right lane) cDNA for 48 hrs and lysed. Equivalent amounts of cell lysates (5 ug per lane) were separated by SDS-PAGE and immunoblotted with anti-CTDSP1. Positive lysates [LY412037] (100ug) and [LC412037] (20ug) can be purchased separately from OriGene.