

Product datasheet for TA502200

MTMR2 Mouse Monoclonal Antibody [Clone ID: OT11F10]

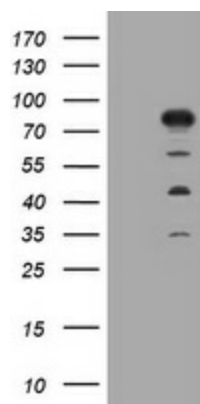
Product data:

Product Type:	Primary Antibodies
Clone Name:	OT11F10
Applications:	WB
Recommended Dilution:	WB 1:2000
Reactivity:	Human, Mouse, Rat
Host:	Mouse
Isotype:	IgG1
Clonality:	Monoclonal
Immunogen:	Full length human recombinant protein of human MTMR2(NP_057240) produced in HEK293T cell.
Formulation:	PBS (pH 7.3) containing 1% BSA, 50% glycerol and 0.02% sodium azide.
Concentration:	1 mg/ml
Purification:	Purified from mouse ascites fluids or tissue culture supernatant by affinity chromatography (protein A/G)
Conjugation:	Unconjugated
Storage:	Store at -20°C as received.
Stability:	Stable for 12 months from date of receipt.
Predicted Protein Size:	73.2 kDa
Gene Name:	myotubularin related protein 2
Database Link:	NP_057240 Entrez Gene 315422 Rat Entrez Gene 8898 Human Q13614
Background:	This gene is a member of the myotubularin family of phosphoinositide lipid phosphatases. The encoded protein possesses phosphatase activity towards phosphatidylinositol-3-phosphate and phosphatidylinositol-3,5-bisphosphate. Mutations in this gene are a cause of Charcot-Marie-Tooth disease type 4B, an autosomal recessive demyelinating neuropathy. Alternatively spliced transcript variants encoding multiple isoforms have been found for this gene. [provided by RefSeq, Aug 2011]

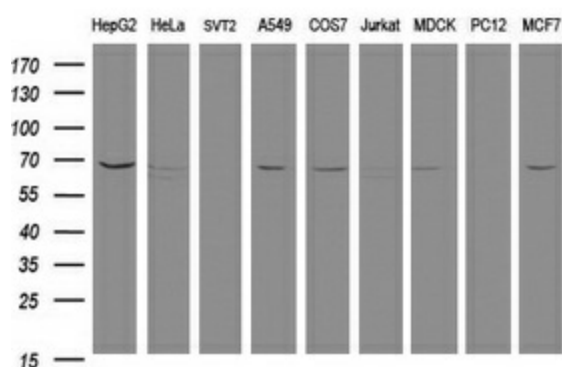

[View online »](#)

Synonyms:	CMT4B; CMT4B1
Protein Families:	Druggable Genome, Phosphatase
Protein Pathways:	Fructose and mannose metabolism, Metabolic pathways, Riboflavin metabolism, Thiamine metabolism

Product images:



HEK293T cells were transfected with the pCMV6-ENTRY control (Left lane) or pCMV6-ENTRY MTMR2 ([RC208703], Right lane) cDNA for 48 hrs and lysed. Equivalent amounts of cell lysates (5 ug per lane) were separated by SDS-PAGE and immunoblotted with anti-MTMR2. Positive lysates [LY414151] (100ug) and [LC414151] (20ug) can be purchased separately from OriGene.



Western blot analysis of extracts (35ug) from 9 different cell lines by using anti-MTMR2 monoclonal antibody at 1:2000 dilution at 1:2000 dilution (HepG2: human; HeLa: human; SVT2: mouse; A549: human; COS7: monkey; Jurkat: human; MDCK: canine; PC12: rat; MCF7: human).