

Product datasheet for **TA502194BM**

Hsp40 (DNAJB1) Mouse Monoclonal Antibody (HRP conjugated) [Clone ID: OTI1E9]

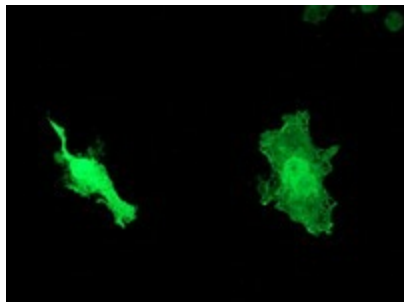
Product data:

Product Type:	Primary Antibodies
Clone Name:	OTI1E9
Applications:	FC, IF, IHC, WB
Recommended Dilution:	WB 1:1000~2000, IHC 1:150, IF 1:100, FLOW 1:100
Reactivity:	Human, Mouse, Rat
Host:	Mouse
Isotype:	IgG2a
Clonality:	Monoclonal
Immunogen:	Full length human recombinant protein of human DNAJB1 (NP_006136) produced in HEK293T cell.
Formulation:	PBS (pH 7.3) containing 1% BSA, 50% glycerol.
Concentration:	0.5 mg/ml
Purification:	Purified from mouse ascites fluids or tissue culture supernatant by affinity chromatography (protein A/G)
Conjugation:	HRP
Storage:	Store at -20°C as received.
Stability:	Stable for 12 months from date of receipt.
Predicted Protein Size:	37.9 kDa
Gene Name:	Dnaj heat shock protein family (Hsp40) member B1
Database Link:	NP_006136 Entrez Gene 81489 Mouse Entrez Gene 361384 Rat Entrez Gene 3337 Human P25685
Synonyms:	Hdj1; Hsp40; HSPF1; RSPH16B; Sis1

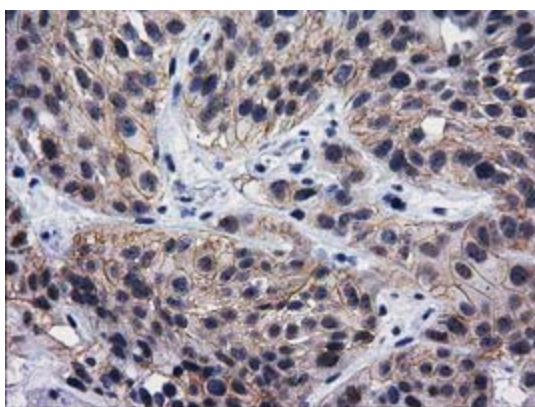


[View online »](#)

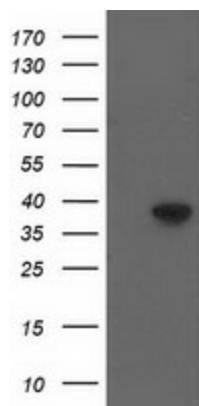
Product images:



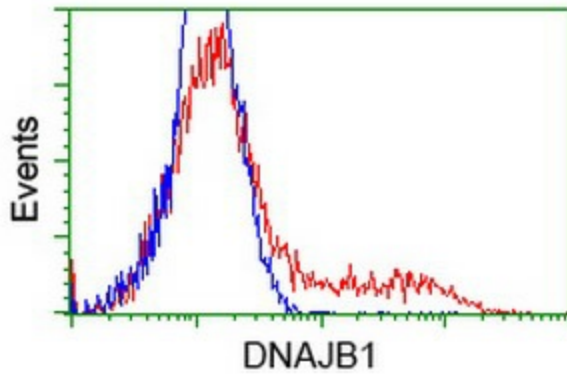
Western blot analysis of extracts (10ug) from HeLa cell line by using anti-DNAJB1 monoclonal antibody (1:200).



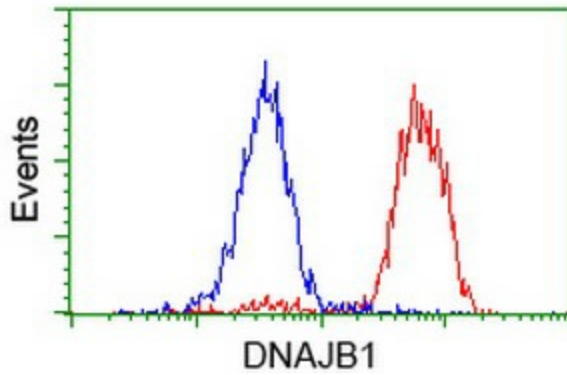
Immunohistochemical staining of paraffin-embedded Carcinoma of Human bladder tissue using anti-DNAJB1 mouse monoclonal antibody. (Heat-induced epitope retrieval by 10mM citric buffer, pH6.0, 100°C for 10min, [TA502194])



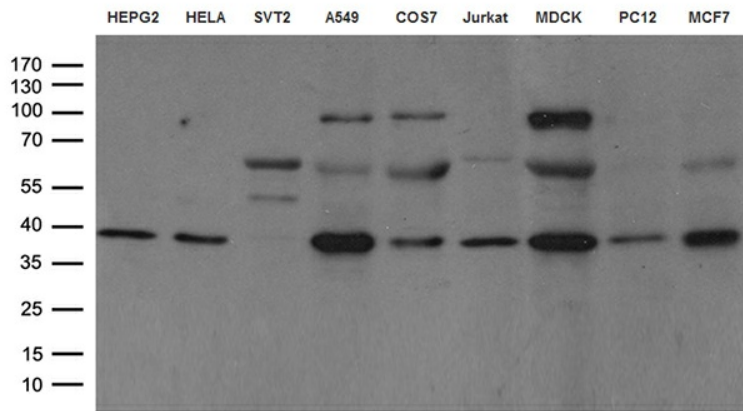
HEK293T cells were transfected with the pCMV6-ENTRY control (Cat# [PS100001], Left lane) or pCMV6-ENTRY DNAJB1 (Cat# [RC201762], Right lane) cDNA for 48 hrs and lysed. Equivalent amounts of cell lysates (5 ug per lane) were separated by SDS-PAGE and immunoblotted with anti-DNAJB1 (Cat# [TA502194]). Positive lysates [LY401851] (100ug) and [LC401851] (20ug) can be purchased separately from OriGene.



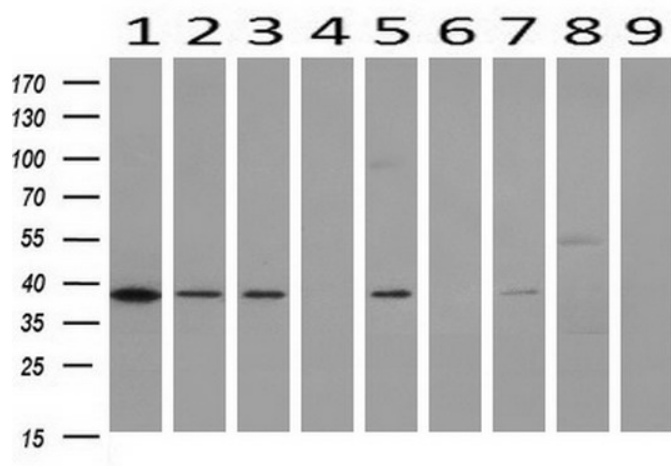
HEK293T cells transfected with either [RC201762] overexpress plasmid (Red) or empty vector control plasmid (Blue) were immunostained by anti-DNAJB1 antibody ([TA502194]), and then analyzed by flow cytometry.



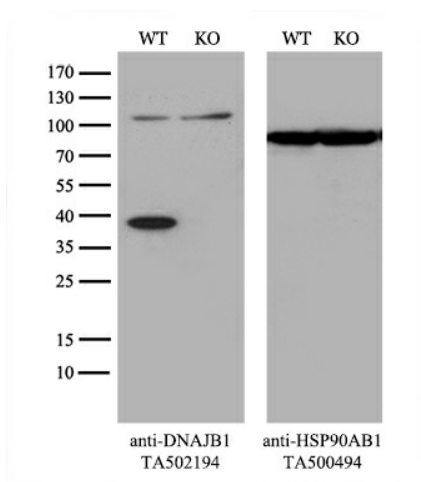
Flow cytometric Analysis of HeLa cells, using anti-DNAJB1 antibody ([TA502194]), (Red), compared to a nonspecific negative control antibody (TA50011), (Blue).



Western blot analysis of extracts (35ug) from 9 different cell lines by using anti-DNAJB1 monoclonal antibody (HepG2: human; HeLa: human; SVT2: mouse; A549: human; COS7: monkey; Jurkat: human; MDCK: canine; PC12: rat; MCF7: human) (1:100).



Western blot analysis of extracts (10ug) from 9 Human tissue by using anti-DNAJB1 monoclonal antibody at 1:200 (1: Testis; 2: Omentum; 3: Uterus; 4: Breast; 5: Brain; 6: Liver; 7: Ovary; 8: Thyroid gland; 9: colon).



Equivalent amounts of cell lysates (10 ug per lane) of wild-type 293T cells (WT, Cat# LC810293T) and DNAJB1-Knockout 293T cells (KO, Cat# [LC811758]) were separated by SDS-PAGE and immunoblotted with anti-DNAJB1 monoclonal antibody [TA502194], (1:250). Then the blotted membrane was stripped and reprobed with anti-HSP90AB1 antibody ([TA500494]) as a loading control.