

## Product datasheet for **TA502190S**

### **SAP102 (DLG3) Mouse Monoclonal Antibody [Clone ID: OTI3F2]**

#### **Product data:**

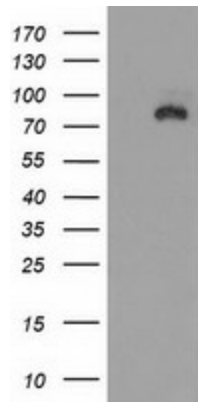
<b>Product Type:</b>	Primary Antibodies
<b>Clone Name:</b>	OTI3F2
<b>Applications:</b>	FC, WB
<b>Recommended Dilution:</b>	WB 1:2000, FLOW 1:100
<b>Reactivity:</b>	Human, Mouse, Rat
<b>Host:</b>	Mouse
<b>Isotype:</b>	IgG1
<b>Clonality:</b>	Monoclonal
<b>Immunogen:</b>	Full length human recombinant protein of human DLG3 (NP_066943) produced in HEK293T cell.
<b>Formulation:</b>	PBS (pH 7.3) containing 1% BSA, 50% glycerol and 0.02% sodium azide.
<b>Concentration:</b>	0.96 mg/ml
<b>Purification:</b>	Purified from mouse ascites fluids or tissue culture supernatant by affinity chromatography (protein A/G)
<b>Conjugation:</b>	Unconjugated
<b>Storage:</b>	Store at -20°C as received.
<b>Stability:</b>	Stable for 12 months from date of receipt.
<b>Predicted Protein Size:</b>	90.1 kDa
<b>Gene Name:</b>	discs large MAGUK scaffold protein 3
<b>Database Link:</b>	<a href="#">NP_066943</a> <a href="#">Entrez Gene 53310 Mouse</a> <a href="#">Entrez Gene 58948 Rat</a> <a href="#">Entrez Gene 1741 Human</a> <a href="#">Q92796</a>
<b>Background:</b>	This gene encodes a member of the membrane-associated guanylate kinase protein family. The encoded protein may play a role in clustering of NMDA receptors at excitatory synapses. It may also negatively regulate cell proliferation through interaction with the C-terminal region of the adenomatous polyposis coli tumor suppressor protein. Mutations in this gene have been associated with X-linked mental retardation. Alternatively spliced transcript variants have been described. [provided by RefSeq]



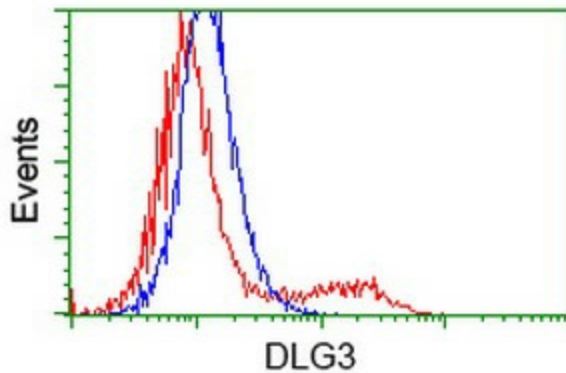
[View online »](#)

Synonyms: MRX; MRX90; NEDLG; PPP1R82; SAP102; XLMR

### Product images:



HEK293T cells were transfected with the pCMV6-ENTRY control (Left lane) or pCMV6-ENTRY DLG3 ([RC210860], Right lane) cDNA for 48 hrs and lysed. Equivalent amounts of cell lysates (5 ug per lane) were separated by SDS-PAGE and immunoblotted with anti-DLG3. Positive lysates [LY402837] (100ug) and [LC402837] (20ug) can be purchased separately from OriGene.



HEK293T cells transfected with either [RC210860] overexpress plasmid (Red) or empty vector control plasmid (Blue) were immunostained by anti-DLG3 antibody ([TA502190]), and then analyzed by flow cytometry.