

Product datasheet for **TA502190AM**

SAP102 (DLG3) Mouse Monoclonal Antibody (Biotin conjugated) [Clone ID: OTI3F2]

Product data:

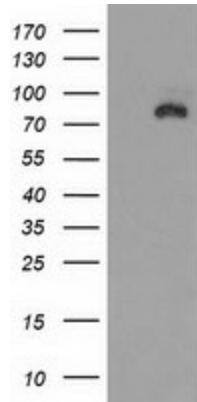
Product Type:	Primary Antibodies
Clone Name:	OTI3F2
Applications:	FC, WB
Recommended Dilution:	WB 1:2000, FLOW 1:100
Reactivity:	Human, Mouse, Rat
Host:	Mouse
Isotype:	IgG1
Clonality:	Monoclonal
Immunogen:	Full length human recombinant protein of human DLG3 (NP_066943) produced in HEK293T cell.
Formulation:	PBS (pH 7.3) containing 1% BSA, 50% glycerol and 0.02% sodium azide.
Concentration:	0.5 mg/ml
Purification:	Purified from mouse ascites fluids or tissue culture supernatant by affinity chromatography (protein A/G)
Conjugation:	Biotin
Storage:	Store at -20°C as received.
Stability:	Stable for 12 months from date of receipt.
Predicted Protein Size:	90.1 kDa
Gene Name:	discs large MAGUK scaffold protein 3
Database Link:	NP_066943 Entrez Gene 53310 Mouse Entrez Gene 58948 Rat Entrez Gene 1741 Human Q92796
Background:	This gene encodes a member of the membrane-associated guanylate kinase protein family. The encoded protein may play a role in clustering of NMDA receptors at excitatory synapses. It may also negatively regulate cell proliferation through interaction with the C-terminal region of the adenomatous polyposis coli tumor suppressor protein. Mutations in this gene have been associated with X-linked mental retardation. Alternatively spliced transcript variants have been described. [provided by RefSeq]



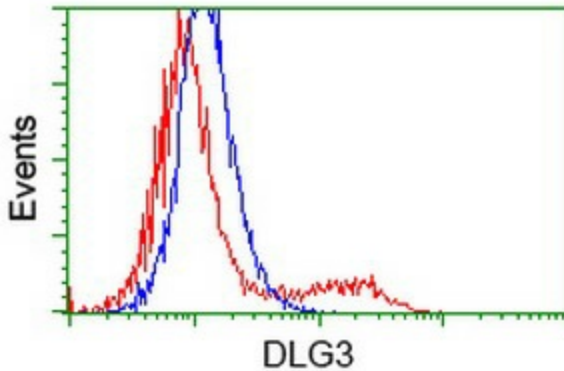
[View online »](#)

Synonyms: MRX; MRX90; NEDLG; PPP1R82; SAP102; XLMR

Product images:



HEK293T cells were transfected with the pCMV6-ENTRY control (Left lane) or pCMV6-ENTRY DLG3 ([RC210860], Right lane) cDNA for 48 hrs and lysed. Equivalent amounts of cell lysates (5 ug per lane) were separated by SDS-PAGE and immunoblotted with anti-DLG3. Positive lysates [LY402837] (100ug) and [LC402837] (20ug) can be purchased separately from OriGene.



HEK293T cells transfected with either [RC210860] overexpress plasmid (Red) or empty vector control plasmid (Blue) were immunostained by anti-DLG3 antibody ([TA502190]), and then analyzed by flow cytometry.