

Product datasheet for **TA502182AM**

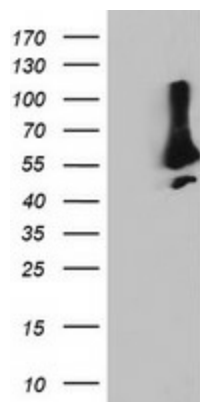
SNX8 Mouse Monoclonal Antibody (Biotin conjugated) [Clone ID: OTI3C4]

Product data:

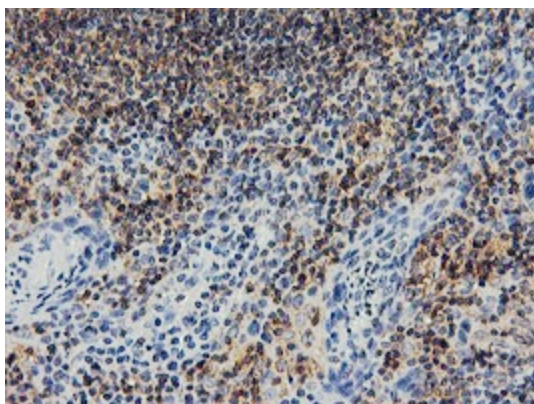
Product Type:	Primary Antibodies
Clone Name:	OTI3C4
Applications:	FC, IF, IHC, WB
Recommended Dilution:	WB: 1:200 - 1:1000, IHC 1:150, IF 1:100, FLOW 1:100
Reactivity:	Human, Mouse, Rat
Host:	Mouse
Isotype:	IgG2a
Clonality:	Monoclonal
Immunogen:	Full length human recombinant protein of human SNX8(NP_037453) produced in HEK293T cell.
Formulation:	PBS (pH 7.3) containing 1% BSA, 50% glycerol and 0.02% sodium azide.
Concentration:	0.5 mg/ml
Purification:	Purified from mouse ascites fluids or tissue culture supernatant by affinity chromatography (protein A/G)
Conjugation:	Biotin
Storage:	Store at -20°C as received.
Stability:	Stable for 12 months from date of receipt.
Predicted Protein Size:	52.4 kDa
Gene Name:	sorting nexin 8
Database Link:	NP_037453 Entrez Gene 29886 Human Q9Y5X2
Synonyms:	Mvp1



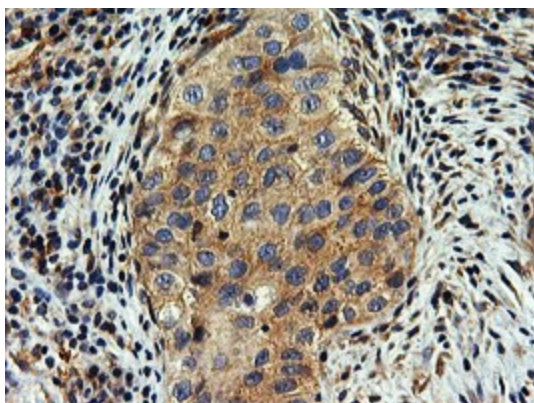
[View online »](#)

Product images:

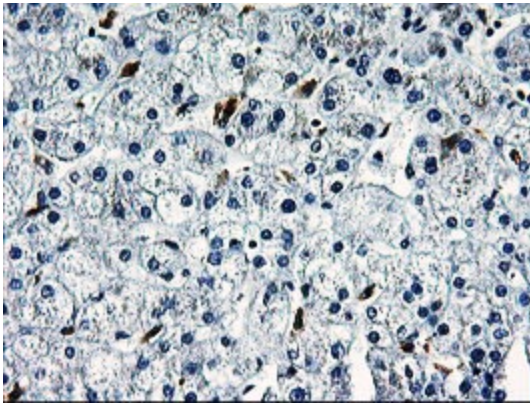
HEK293T cells were transfected with the pCMV6-ENTRY control (Left lane) or pCMV6-ENTRY SNX8 ([RC205847], Right lane) cDNA for 48 hrs and lysed. Equivalent amounts of cell lysates (5 ug per lane) were separated by SDS-PAGE and immunoblotted with anti-SNX8. Positive lysates [LY402251] (100ug) and [LC402251] (20ug) can be purchased separately from OriGene.



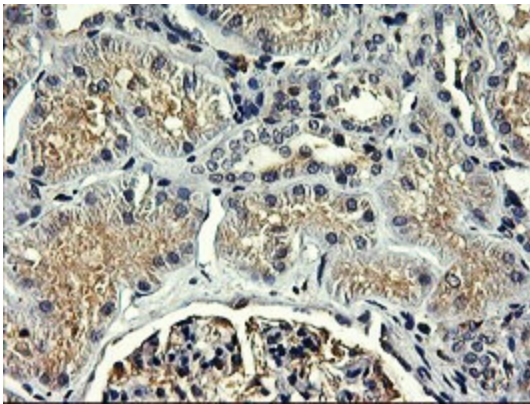
Immunohistochemical staining of paraffin-embedded Human tonsil within the normal limits using anti-SNX8 mouse monoclonal antibody. (Heat-induced epitope retrieval by 10mM citric buffer, pH6.0, 100°C for 10min, [TA502182])



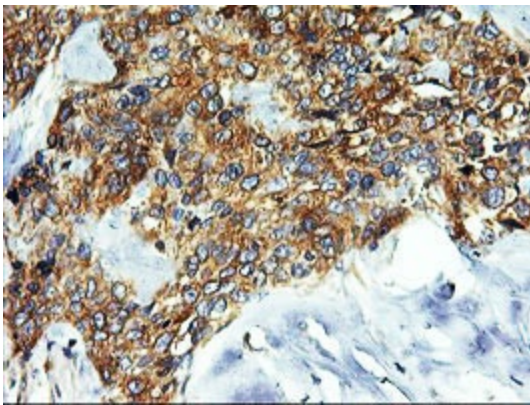
Immunohistochemical staining of paraffin-embedded Carcinoma of Human bladder tissue using anti-SNX8 mouse monoclonal antibody. (Heat-induced epitope retrieval by 10mM citric buffer, pH6.0, 100°C for 10min, [TA502182])



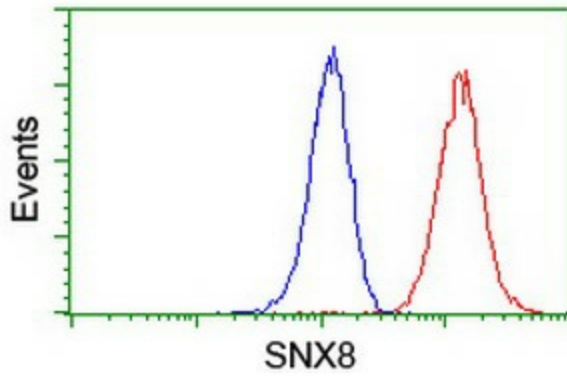
Immunohistochemical staining of paraffin-embedded Human liver tissue within the normal limits using anti-SNX8 mouse monoclonal antibody. (Heat-induced epitope retrieval by 10mM citric buffer, pH6.0, 100°C for 10min, [TA502182])



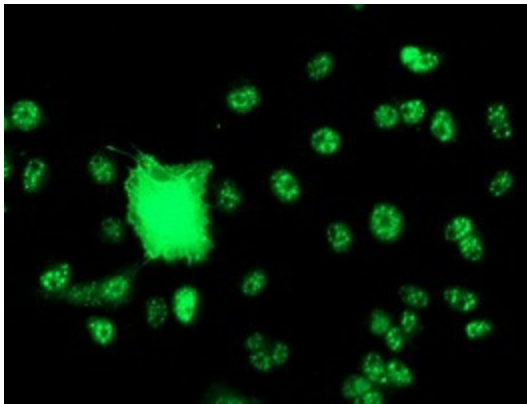
Immunohistochemical staining of paraffin-embedded Human Kidney tissue within the normal limits using anti-SNX8 mouse monoclonal antibody. (Heat-induced epitope retrieval by 10mM citric buffer, pH6.0, 100°C for 10min, [TA502182])



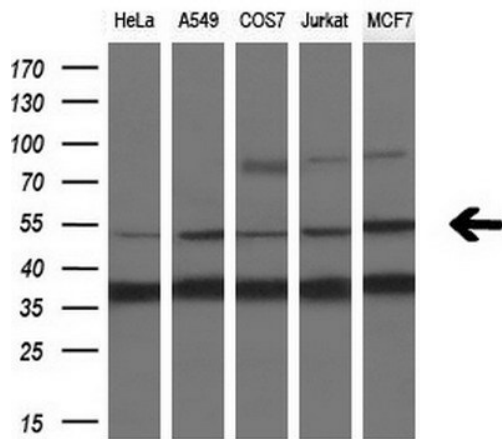
Immunohistochemical staining of paraffin-embedded Adenocarcinoma of Human breast tissue using anti-SNX8 mouse monoclonal antibody. (Heat-induced epitope retrieval by 10mM citric buffer, pH6.0, 100°C for 10min, [TA502182])



Flow cytometric Analysis of Jurkat cells, using anti-SNX8 antibody ([TA502182]), (Red), compared to a nonspecific negative control antibody, (Blue).



Anti-SNX8 mouse monoclonal antibody ([TA502182]) immunofluorescent staining of COS7 cells transiently transfected by pCMV6-ENTRY SNX8 ([RC205847]).



Western blot analysis of extracts (10ug) from 5 different cell lines by using anti-SNX8 monoclonal antibody (1:200).